

Latitude 5490

Owner's Manual



Notes, cautions, and warnings

 | **NOTE:** A NOTE indicates important information that helps you make better use of your product.

 | **CAUTION:** A CAUTION indicates either potential damage to hardware or loss of data and tells you how to avoid the problem.

 | **WARNING:** A WARNING indicates a potential for property damage, personal injury, or death.

© 2018 Dell Inc. or its subsidiaries. All rights reserved. Dell, EMC, and other trademarks are trademarks of Dell Inc. or its subsidiaries. Other trademarks may be trademarks of their respective owners.

1 Working on your computer.....	7
Safety precautions.....	7
Standby power.....	7
Bonding	7
Electrostatic discharge—ESD protection.....	7
ESD field service kit	8
Transporting sensitive components.....	9
Before working inside your computer.....	9
After working inside your computer.....	9
2 Removing and installing components.....	10
Recommended tools.....	10
Screw size list.....	11
Subscriber Identity Module(SIM) board.....	11
Removing the Subscriber Identification Module card.....	11
Installing the Subscriber Identification Module card.....	12
Base cover.....	12
Removing the base cover.....	12
Installing the base cover.....	14
Battery.....	14
Lithium-ion battery precautions.....	14
Removing the battery.....	15
Installing the battery.....	15
Solid State Drive — optional	16
Removing the SSD card.....	16
Installing the SSD card.....	17
Removing the SSD frame.....	17
Installing the SSD frame.....	18
Hard drive.....	18
Removing hard drive.....	18
Installing hard drive	19
Coin-cell battery.....	19
Removing the coin cell battery.....	19
Installing coin cell battery.....	20
WLAN card.....	20
Removing WLAN card.....	20
Installing WLAN card.....	23
WWAN card – optional.....	23
Removing the WWAN card.....	23
Installing the WWAN card.....	24
Memory modules.....	24
Removing the memory module.....	24
Installing the memory module.....	25

Keyboard lattice and Keyboard.....	25
Removing keyboard lattice.....	25
Installing keyboard lattice.....	26
Removing the keyboard.....	26
Installing the keyboard.....	29
Heat sink	29
Removing the heat sink	29
Installing the heat sink	30
System fan.....	30
Removing the system fan.....	30
Installing the system fan.....	31
Power connector port.....	32
Removing the power connector port.....	32
Installing power connector port.....	32
Chassis frame.....	33
Removing the chassis frame.....	33
Installing the chassis frame.....	34
SmartCard module.....	35
Removing smart card reader board.....	35
Installing smart card reader board.....	36
Speaker.....	37
Removing the speaker.....	37
Installing the speaker.....	38
System board.....	38
Removing system board.....	38
Installing system board.....	41
Display hinge cover.....	42
Removing display hinge cover	42
Installing display hinge cover	43
Display assembly.....	43
Removing display assembly.....	43
Installing display assembly.....	47
Display bezel.....	48
Removing display bezel	48
Installing display bezel	49
Display panel.....	49
Removing display panel	49
Installing display panel	51
Display (eDP) cable.....	52
Removing display cable	52
Installing display cable	52
Camera.....	53
Removing camera.....	53
Installing camera.....	54
Display hinges.....	54
Removing display hinge	54
Installing display hinge	55

Display back cover assembly.....	55
Removing the display back cover assembly	55
Installing the display back cover assembly	56
Palm rest.....	56
Removing palm rest.....	56
Installing palm rest.....	57
3 Technical specifications.....	59
Processor	59
Memory	60
Storage specifications.....	60
Audio specifications.....	60
Video specification.....	61
Integrated.....	61
Discrete.....	61
Camera option	61
Ports and Connectors	62
Contacted smart card specifications.....	62
Display specification.....	62
Keyboard specifications	64
Touch pad specifications.....	65
Battery specifications.....	65
AC Adapter specifications.....	66
System dimensions.....	67
Operating Conditions.....	67
4 Technology and components.....	69
Power adapter.....	69
Kaby Lake — 7th Generation Intel Core processors.....	69
Kaby lake Specifications.....	70
Kaby Lake Refresh — 8th Generation Intel Core processors.....	70
Kaby Lake Refresh Specifications.....	71
DDR4.....	71
DDR4 Details.....	71
Memory Errors.....	72
HDMI 1.4.....	72
HDMI 1.4 Features.....	72
Advantages of HDMI.....	73
HDMI 1.4.....	73
HDMI 1.4 Features.....	73
Advantages of HDMI.....	73
USB features.....	74
USB 3.0/USB 3.1 Gen 1 (SuperSpeed USB).....	74
Speed.....	74
Applications.....	75
Compatibility.....	75
Advantages of Displayport over USB Type-C.....	76

USB Type-C.....	76
Alternate Mode.....	76
USB Power Delivery.....	76
5 System setup options.....	77
Boot Sequence.....	77
Navigation keys.....	78
System Setup overview.....	78
Accessing System Setup.....	78
General screen options.....	78
System Configuration screen options.....	79
Video screen options.....	80
Security screen options.....	81
Secure Boot screen options.....	82
Intel Software Guard Extensions.....	83
Performance screen options.....	83
Power Management screen options.....	84
POST Behavior screen options.....	85
Manageability.....	86
Virtualization support screen options.....	87
Wireless screen options.....	87
Maintenance screen options.....	87
6 Software.....	89
Operating system configurations.....	89
Downloading drivers.....	89
Chipset driver.....	89
Serial IO driver.....	90
Graphics controller driver.....	90
USB drivers.....	90
Network drivers.....	91
Realtek Audio.....	91
Serial ATA drivers.....	91
Security drivers.....	92
7 Troubleshooting.....	93
Enhanced Pre-Boot System Assessment ePSA diagnostics.....	93
Running the ePSA Diagnostics.....	94
Real Time Clock reset.....	94
8 Contacting Dell.....	95

Working on your computer

Topics:

- [Safety precautions](#)
- [Before working inside your computer](#)
- [After working inside your computer](#)

Safety precautions

The safety precautions chapter details the primary steps to be taken before performing any disassembly instructions.

Observe the following safety precautions before you perform any installation or break/fix procedures involving disassembly or reassembly:

- Turn off the system and all attached peripherals.
- Disconnect the system and all attached peripherals from AC power.
- Disconnect all network cables, telephone, and telecommunications lines from the system.
- Use an ESD field service kit when working inside any notebook to avoid electrostatic discharge (ESD) damage.
- After removing any system component, carefully place the removed component on an anti-static mat.
- Wear shoes with non-conductive rubber soles to reduce the chance of getting electrocuted.

Standby power

Dell products with standby power must be unplugged before you open the case. Systems that incorporate standby power are essentially powered while turned off. The internal power enables the system to be remotely turned on (wake on LAN) and suspended into a sleep mode and has other advanced power management features.

Unplugging, pressing and holding the power button for 15 seconds should discharge residual power in the system board. notebooks.

Bonding

Bonding is a method for connecting two or more grounding conductors to the same electrical potential. This is done through the use of a field service electrostatic discharge (ESD) kit. When connecting a bonding wire, ensure that it is connected to bare metal and never to a painted or non-metal surface. The wrist strap should be secure and in full contact with your skin, and ensure that you remove all jewelry such as watches, bracelets, or rings prior to bonding yourself and the equipment.

Electrostatic discharge—ESD protection

ESD is a major concern when you handle electronic components, especially sensitive components such as expansion cards, processors, memory DIMMs, and system boards. Very slight charges can damage circuits in ways that may not be obvious, such as intermittent problems or a shortened product life span. As the industry pushes for lower power requirements and increased density, ESD protection is an increasing concern.

Due to the increased density of semiconductors used in recent Dell products, the sensitivity to static damage is now higher than in previous Dell products. For this reason, some previously approved methods of handling parts are no longer applicable.

Two recognized types of ESD damage are catastrophic and intermittent failures.

- **Catastrophic** – Catastrophic failures represent approximately 20 percent of ESD-related failures. The damage causes an immediate and complete loss of device functionality. An example of catastrophic failure is a memory DIMM that has received a static shock and immediately generates a "No POST/No Video" symptom with a beep code emitted for missing or nonfunctional memory.
- **Intermittent** – Intermittent failures represent approximately 80 percent of ESD-related failures. The high rate of intermittent failures means that most of the time when damage occurs, it is not immediately recognizable. The DIMM receives a static shock, but the tracing is merely weakened and does not immediately produce outward symptoms related to the damage. The weakened trace may take weeks or months to melt, and in the meantime may cause degradation of memory integrity, intermittent memory errors, etc.

The more difficult type of damage to recognize and troubleshoot is the intermittent (also called latent or "walking wounded") failure.

Perform the following steps to prevent ESD damage:

- Use a wired ESD wrist strap that is properly grounded. The use of wireless anti-static straps is no longer allowed; they do not provide adequate protection. Touching the chassis before handling parts does not ensure adequate ESD protection on parts with increased sensitivity to ESD damage.
- Handle all static-sensitive components in a static-safe area. If possible, use anti-static floor pads and workbench pads.
- When unpacking a static-sensitive component from its shipping carton, do not remove the component from the anti-static packing material until you are ready to install the component. Before unwrapping the anti-static packaging, ensure that you discharge static electricity from your body.
- Before transporting a static-sensitive component, place it in an anti-static container or packaging.

ESD field service kit

The unmonitored Field Service kit is the most commonly used service kit. Each Field Service kit includes three main components: anti-static mat, wrist strap, and bonding wire.

Components of an ESD field service kit

The components of an ESD field service kit are:

- **Anti-Static Mat** – The anti-static mat is dissipative and parts can be placed on it during service procedures. When using an anti-static mat, your wrist strap should be snug and the bonding wire should be connected to the mat and to any bare metal on the system being worked on. Once deployed properly, service parts can be removed from the ESD bag and placed directly on the mat. ESD-sensitive items are safe in your hand, on the ESD mat, in the system, or inside a bag.
- **Wrist Strap and Bonding Wire** – The wrist strap and bonding wire can be either directly connected between your wrist and bare metal on the hardware if the ESD mat is not required, or connected to the anti-static mat to protect hardware that is temporarily placed on the mat. The physical connection of the wrist strap and bonding wire between your skin, the ESD mat, and the hardware is known as bonding. Use only Field Service kits with a wrist strap, mat, and bonding wire. Never use wireless wrist straps. Always be aware that the internal wires of a wrist strap are prone to damage from normal wear and tear, and must be checked regularly with a wrist strap tester in order to avoid accidental ESD hardware damage. It is recommended to test the wrist strap and bonding wire at least once per week.
- **ESD Wrist Strap Tester** – The wires inside of an ESD strap are prone to damage over time. When using an unmonitored kit, it is a best practice to regularly test the strap prior to each service call, and at a minimum, test once per week. A wrist strap tester is the best method for doing this test. If you do not have your own wrist strap tester, check with your regional office to find out if they have one. To perform the test, plug the wrist-strap's bonding-wire into the tester while it is strapped to your wrist and push the button to test. A green LED is lit if the test is successful; a red LED is lit and an alarm sounds if the test fails.
- **Insulator Elements** – It is critical to keep ESD sensitive devices, such as plastic heat sink casings, away from internal parts that are insulators and often highly charged.
- **Working Environment** – Before deploying the ESD Field Service kit, assess the situation at the customer location. For example, deploying the kit for a server environment is different than for a desktop or portable environment. Servers are typically installed in a rack within a data center; desktops or portables are typically placed on office desks or cubicles. Always look for a large open flat work area that is free of clutter and large enough to deploy the ESD kit with additional space to accommodate the type of system that is being repaired. The workspace should also be free of insulators that can cause an ESD event. On the work area, insulators such as Styrofoam and other plastics should always be moved at least 12 inches or 30 centimeters away from sensitive parts before physically handling any hardware components.
- **ESD Packaging** – All ESD-sensitive devices must be shipped and received in static-safe packaging. Metal, static-shielded bags are preferred. However, you should always return the damaged part using the same ESD bag and packaging that the new part arrived in. The ESD bag should be folded over and taped shut and all the same foam packing material should be used in the original box that the new part arrived in. ESD-sensitive devices should be removed from packaging only at an ESD-protected work surface, and parts should never be placed on top of the ESD bag because only the inside of the bag is shielded. Always place parts in your hand, on the ESD mat, in the system, or inside an anti-static bag.

- **Transporting Sensitive Components** – When transporting ESD sensitive components such as replacement parts or parts to be returned to Dell, it is critical to place these parts in anti-static bags for safe transport.

ESD protection summary

It is recommended that all field service technicians use the traditional wired ESD grounding wrist strap and protective anti-static mat at all times when servicing Dell products. In addition, it is critical that technicians keep sensitive parts separate from all insulator parts while performing service and that they use anti-static bags for transporting sensitive components.

Transporting sensitive components

When transporting ESD sensitive components such as replacement parts or parts to be returned to Dell, it is critical to place these parts in anti-static bags for safe transport.

Before working inside your computer

- 1 Ensure that your work surface is flat and clean to prevent the computer cover from being scratched.
- 2 Turn off your computer.
- 3 If the computer is connected to a docking device (docked), undock it.
- 4 Disconnect all network cables from the computer (if available).

⚠ CAUTION: If your computer has an RJ45 port, disconnect the network cable by first unplugging the cable from your computer.

- 5 Disconnect your computer and all attached devices from their electrical outlets.
- 6 Open the display.
- 7 Press and hold the power button for few seconds, to ground the system board.

⚠ CAUTION: To guard against electrical shock unplug your computer from the electrical outlet before performing Step # 8.

⚠ CAUTION: To avoid electrostatic discharge, ground yourself by using a wrist grounding strap or by periodically touching an unpainted metal surface at the same time as touching a connector on the back of the computer.

- 8 Remove any installed ExpressCards or Smart Cards from the appropriate slots.

After working inside your computer

After you complete any replacement procedure, ensure that you connect any external devices, cards, and cables before turning on your computer.

⚠ CAUTION: To avoid damage to the computer, use only the battery designed for this particular Dell computer. Do not use batteries designed for other Dell computers.

- 1 Connect any external devices, such as a port replicator or media base, and replace any cards, such as an ExpressCard.
- 2 Connect any telephone or network cables to your computer.

⚠ CAUTION: To connect a network cable, first plug the cable into the network device and then plug it into the computer.

- 3 Connect your computer and all attached devices to their electrical outlets.
- 4 Turn on your computer.

Removing and installing components

Topics:

- Recommended tools
- Screw size list
- Subscriber Identity Module(SIM) board
- Base cover
- Battery
- Solid State Drive — optional
- Hard drive
- Coin-cell battery
- WLAN card
- WWAN card – optional
- Memory modules
- Keyboard lattice and Keyboard
- Heat sink
- System fan
- Power connector port
- Chassis frame
- SmartCard module
- Speaker
- System board
- Display hinge cover
- Display assembly
- Display bezel
- Display panel
- Display (eDP) cable
- Camera
- Display hinges
- Display back cover assembly
- Palm rest

Recommended tools

The procedures in this document require the following tools:

- Phillips #0 screwdriver
- Phillips #1 screwdriver
- Plastic scribe

NOTE: The #0 screw driver is for screws 0-1 and the #1 screw driver is for screws 2-4

Screw size list

Table 1. Latitude 5490 screw size list

Component	M2x3 (Thin head)	M2.0x5	M2.0x2.0	M2x6	M2x2.7	M2.0x2.5	M2.5x3
Base cover				8			
Battery				1			
Heatsink	4						
WLAN	1						
SSD card	1						
Keyboard						5	
Display assembly		4					
Display panel	4						
Power connector port	2						
Palmrest	2						
LED board			1				
System board	4						
Type-C USB bracket		2					
Display hinge cover	2						
Display hinge							6
Hard drive					4		
Chassis frame	5	8					
Touchpad panel(button)	2						
Smart card module	2						
SSD frame	1						
WWAN frame	1						

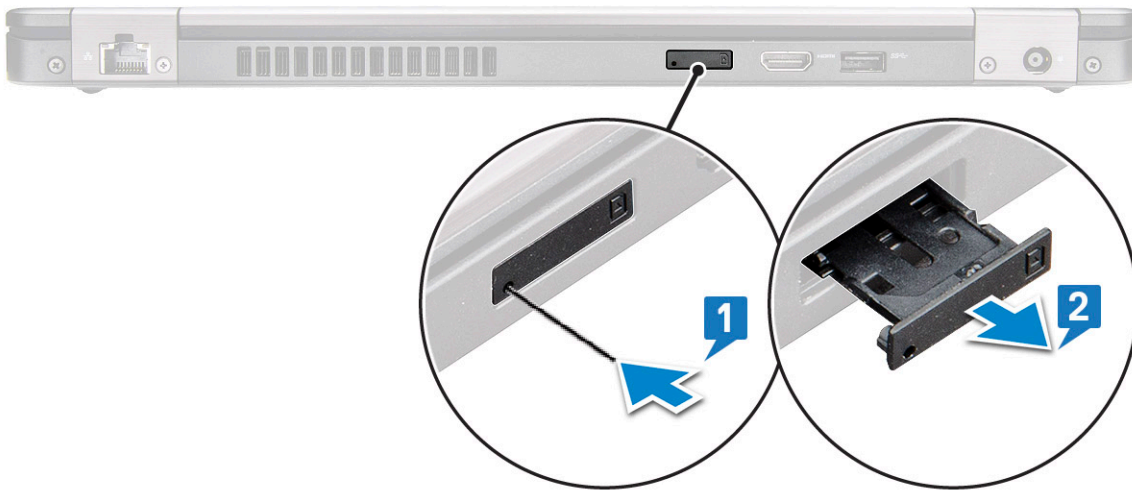
Subscriber Identity Module(SIM) board

Removing the Subscriber Identification Module card

⚠ CAUTION: Removing the SIM card when the computer is on may cause data loss or damage the card. Ensure your computer is turned off or the network connections are disabled.

- 1 Insert a paperclip or a SIM card removal tool into the pinhole on the SIM card tray [1].
- 2 Pull the SIM card tray to remove it [2].
- 3 Remove the SIM card from the SIM card tray.

- 4 Push the SIM card tray into the slot until it clicks into place.



Installing the Subscriber Identification Module card

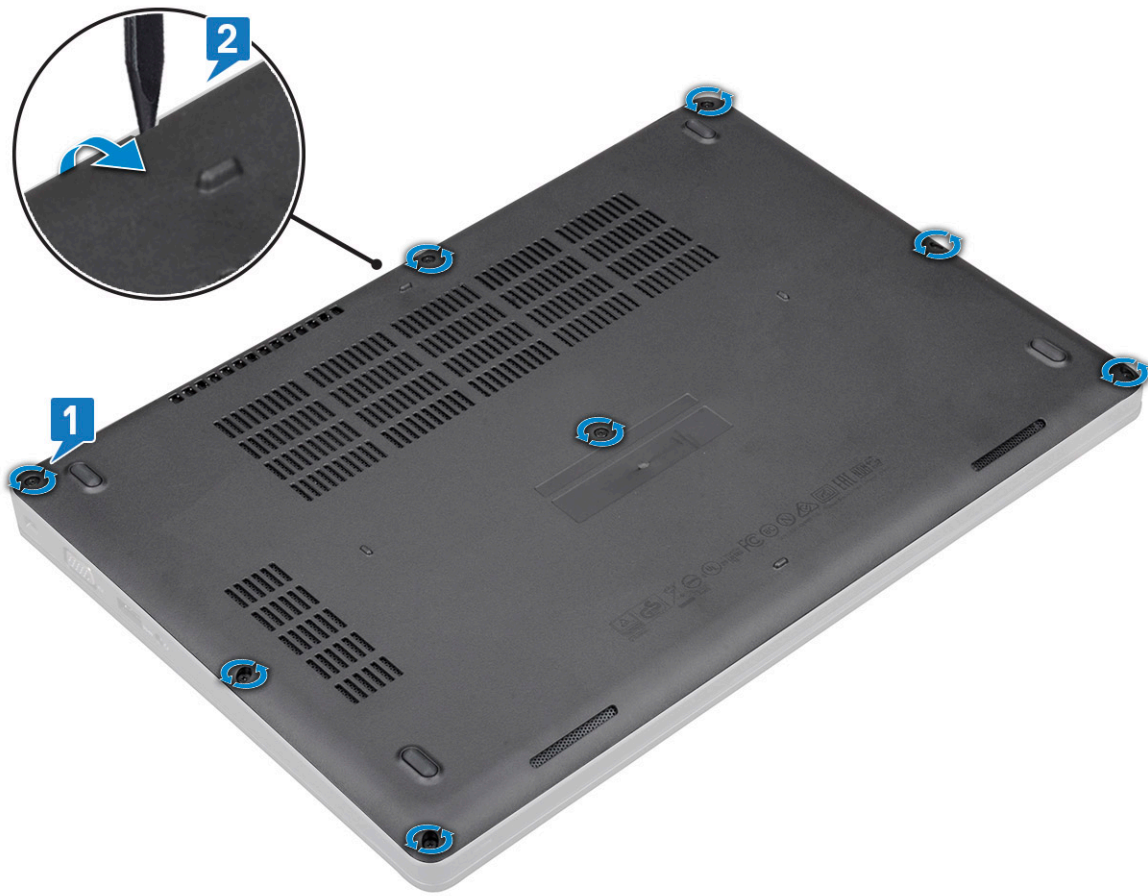
- 1 Insert a paperclip or a SIM card removal tool into the pinhole [1].
- 2 Pull the SIM card tray to remove it [2].
- 3 Place the SIM card on the SIM card tray.
- 4 Push the SIM card tray into the slot until it clicks into place .

Base cover

Removing the base cover

- 1 Follow the procedure in [Before working inside your computer](#).
- 2 To remove the base cover:
 - a Loosen the 8 (M2.0x6) captive screws that secure the base cover to the system [1].
 - b Pry the base cover from the recess at the top edge [2] and continue prying throughout the outer sides of the base cover in clockwise direction to release the base cover.

NOTE: Use a plastic scribe to pry the base cover from the edges.



c Lift the base cover from the system.



Installing the base cover

- 1 Place the base cover to align with the screw holders on the system.
- 2 Tighten the 8 (M2.0x6) captive screws to secure the base cover to the system.
- 3 Follow the procedure in [After working inside your computer](#).

Battery

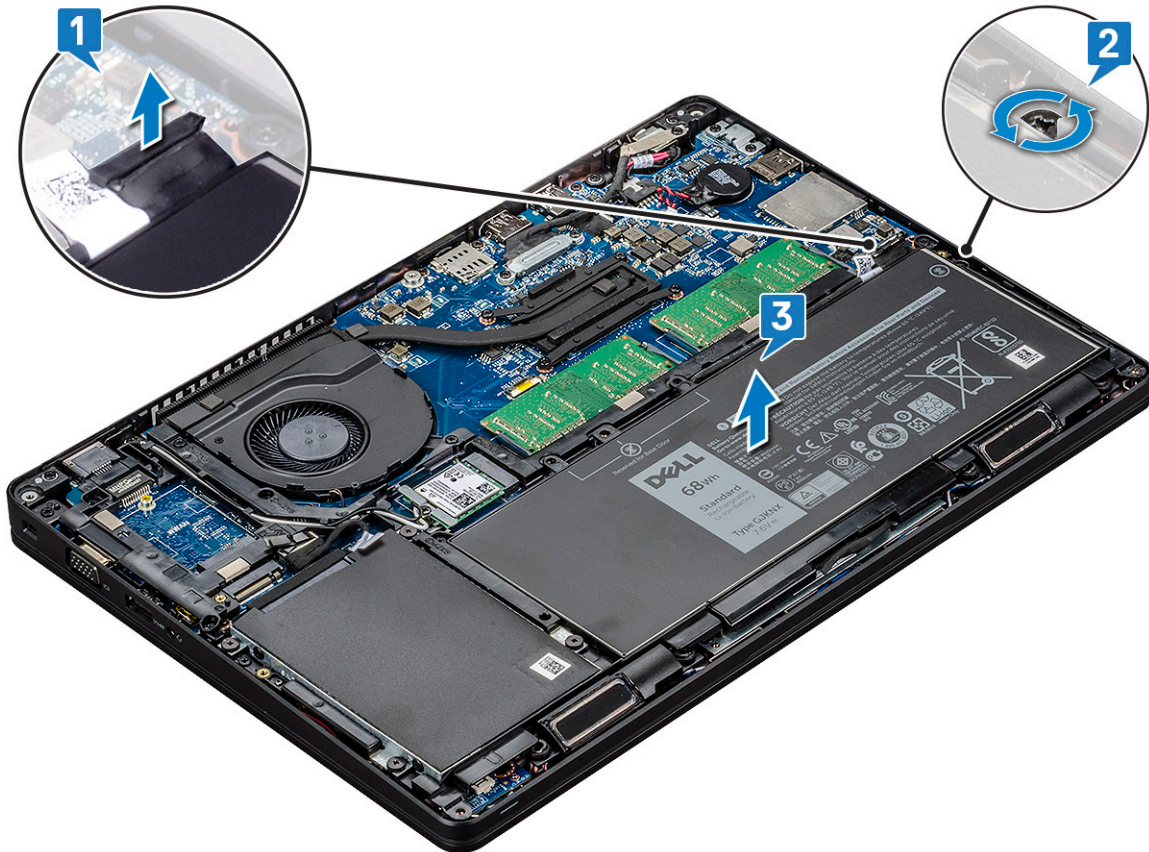
Lithium-ion battery precautions

⚠ CAUTION:

- Exercise caution when handling Lithium-ion batteries.
- Discharge the battery as much as possible before removing it from the system. This can be done by disconnecting the AC adapter from the system to allow the battery to drain.
- Do not crush, drop, mutilate, or penetrate the battery with foreign objects.
- Do not expose the battery to high temperatures, or disassemble battery packs and cells.
- Do not apply pressure to the surface of the battery.
- Do not bend the battery.
- Do not use tools of any kind to pry on or against the battery.
- If a battery gets stuck in a device as a result of swelling, do not try to free it as puncturing, bending, or crushing a Lithium-ion battery can be dangerous. In such an instance, the entire system should be replaced. Contact <https://www.dell.com/support> for assistance and further instructions.
- Always purchase genuine batteries from <https://www.dell.com> or authorized Dell partners and re-sellers.

Removing the battery

- 1 Follow the procedure in [Before working inside your computer](#).
- 2 Remove the [base cover](#).
- 3 To remove the battery:
 - a Disconnect the battery cable from the connector on the system board [1] and unrout the cable from the routing channel.
 - b Loosen the M2x6 captive screw that secures the battery to the system [2].
 - c Lift the battery away from the system [3].



Installing the battery

- 1 Insert the battery into the slot on the system.
- 2 Route the battery cable through the routing channel.
- 3 Tighten the M2x6 captive screw to secure the battery to the system.
- 4 Connect the battery cable to the connector on the system board.
- 5 Install the [base cover](#).
- 6 Follow the procedure in [After working inside your computer](#).

Solid State Drive — optional

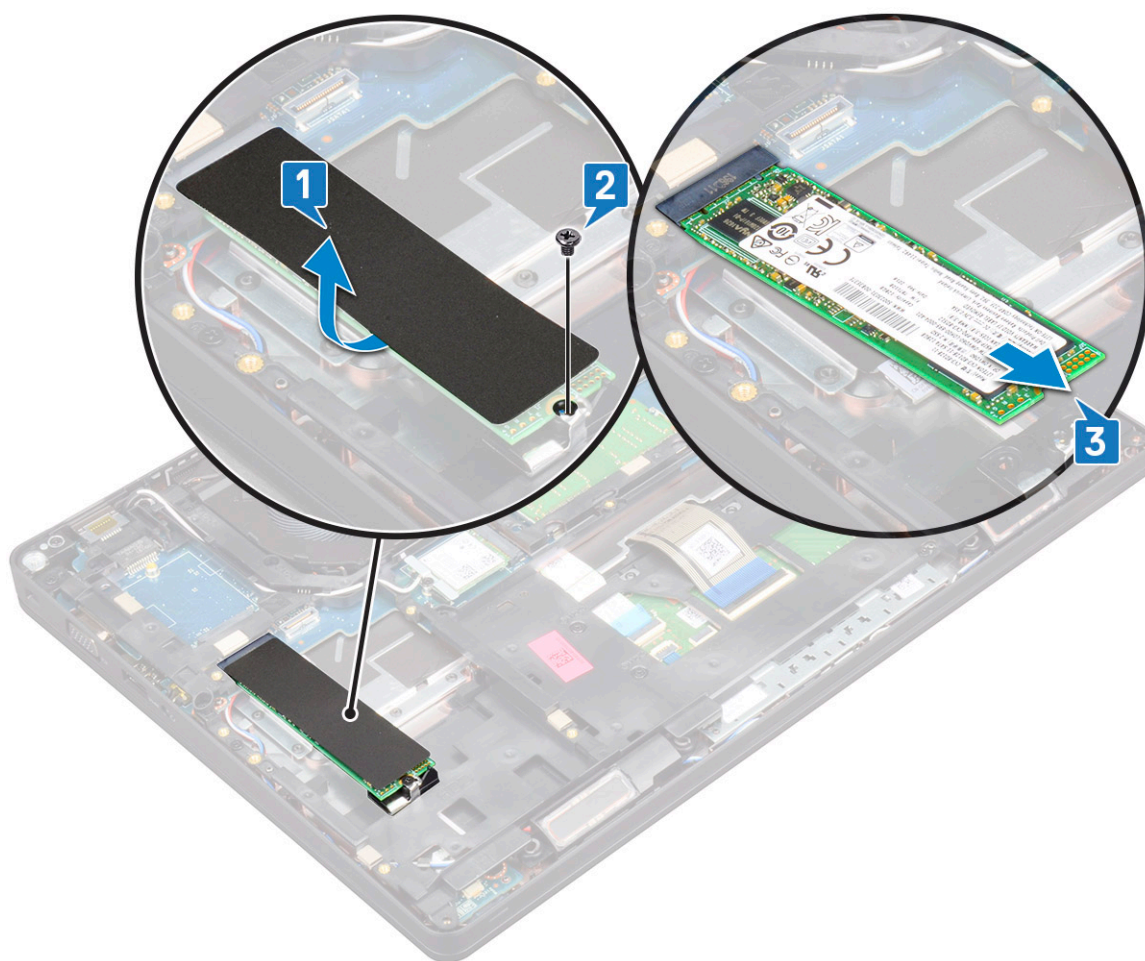
Removing the SSD card

① | **NOTE:** The following steps are applicable for SATA M.2 2280 and PCIe M.2 2280

- 1 Follow the procedure in [Before working inside your computer](#).
- 2 Remove the :
 - a [base cover](#)
 - b [battery](#)
- 3 To remove the Solid State Drive (SSD) card:
 - a Peel the adhesive mylar shield that secures the SSD card [1].

① | **NOTE:** Remove the adhesive mylar carefully so that it can be reused on the replacement SSD.

 - b Remove the M2x3 screw that secures the SSD to the system [2].
 - c Slide and lift the SSD from the system [3].



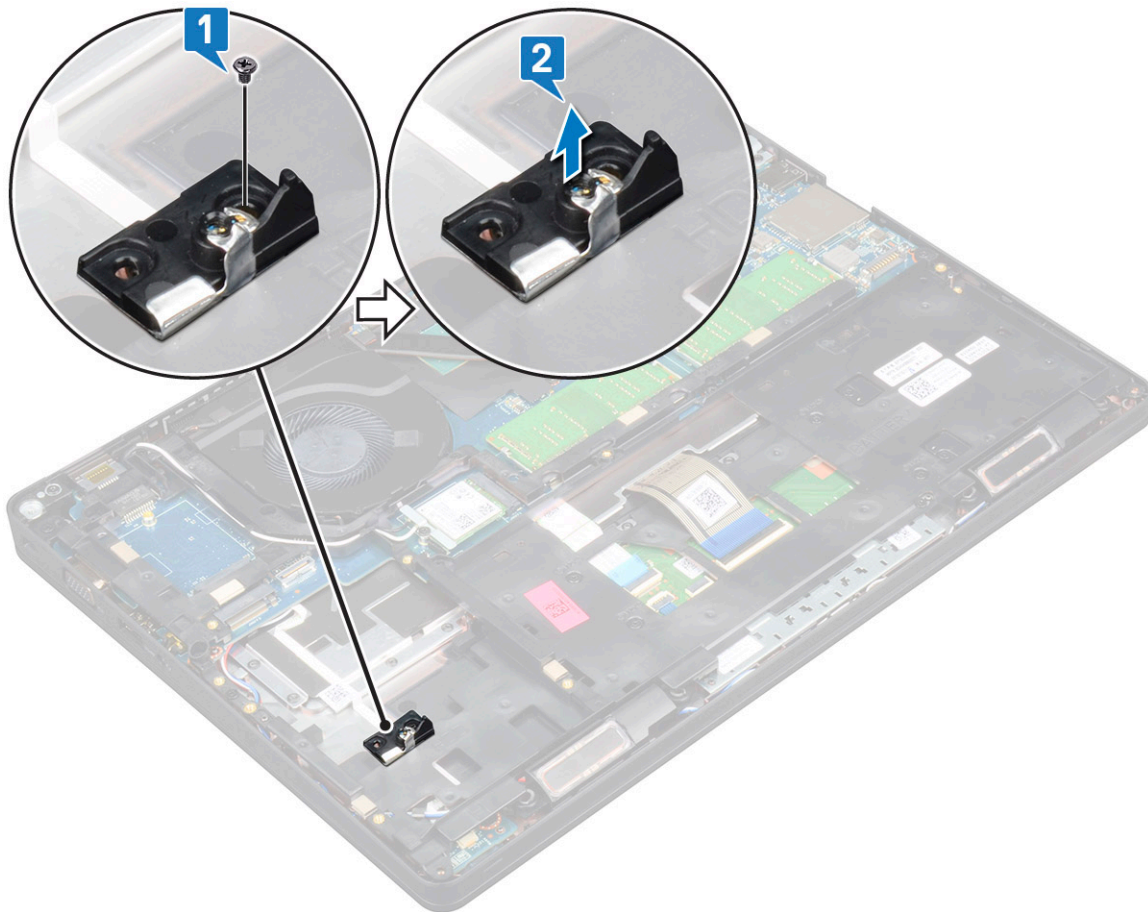
Installing the SSD card

① | **NOTE:** The following procedure applies for SATA M.2 2280 and PCIe M.2 2280

- 1 Insert the SSD card into the connector on the system.
- 2 Replace the M2*3 screw that secures the SSD card to the system.
- 3 Place the Mylar shield over the SSD.
- 4 Install the :
 - a battery
 - b base cover
- 5 Follow the procedure in [After working inside your computer](#).

Removing the SSD frame

- 1 Follow the procedure in [Before working inside your computer](#).
- 2 Remove the:
 - a base cover
 - b battery
 - c SSD card
- 3 To remove the SSD frame:
 - a Remove the M2x3 screw that secures the SSD frame to the system [1].
 - b Lift the SSD frame from the system [2].



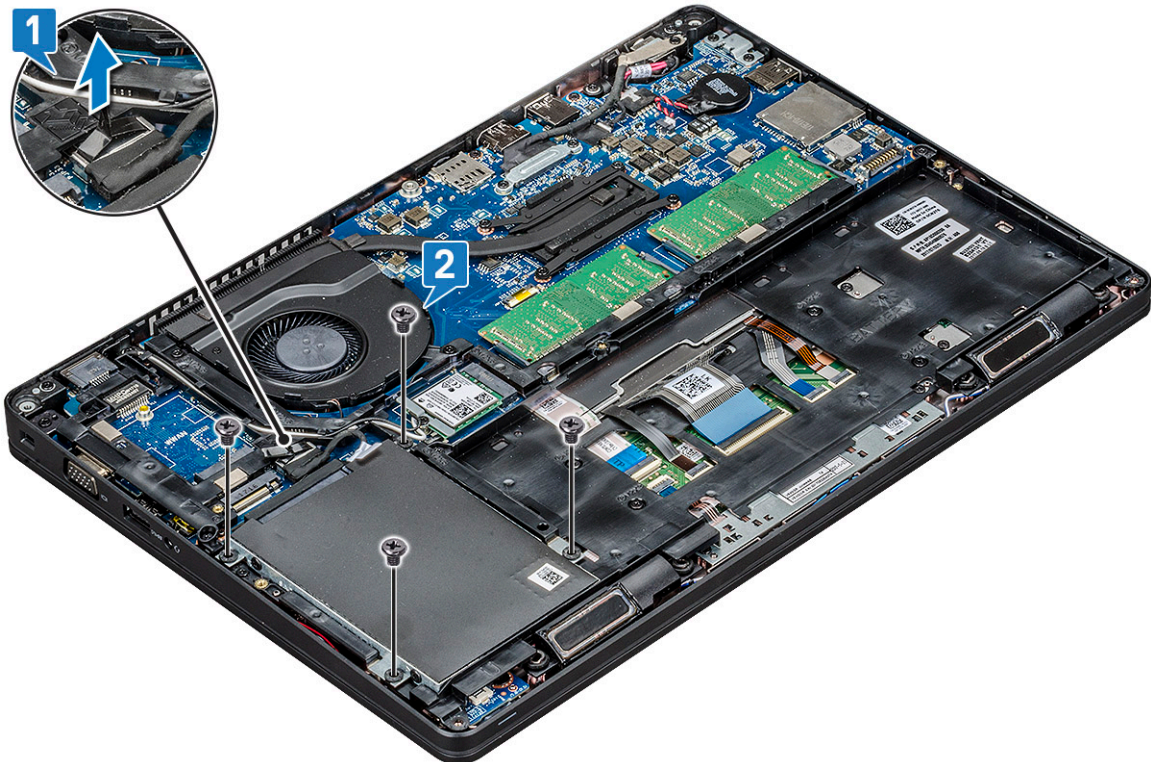
Installing the SSD frame

- 1 Place the SSD frame into the slot in the system.
- 2 Replace the M2x3 screw that secures the SSD frame to the system.
- 3 Install the:
 - a SSD card
 - b battery
 - c base cover
- 4 Follow the procedure in [After working inside your computer](#).

Hard drive

Removing hard drive

- 1 Follow the procedure in [Before working inside your computer](#).
- 2 Remove the :
 - a base cover
 - b battery
- 3 To remove the hard drive:
 - a Disconnect the hard drive cable from the connector on the system board [1].
 - b Remove the four (M2 x 2.7) screws that secure the hard drive to the system [2].



- c Lift the hard drive from the system.



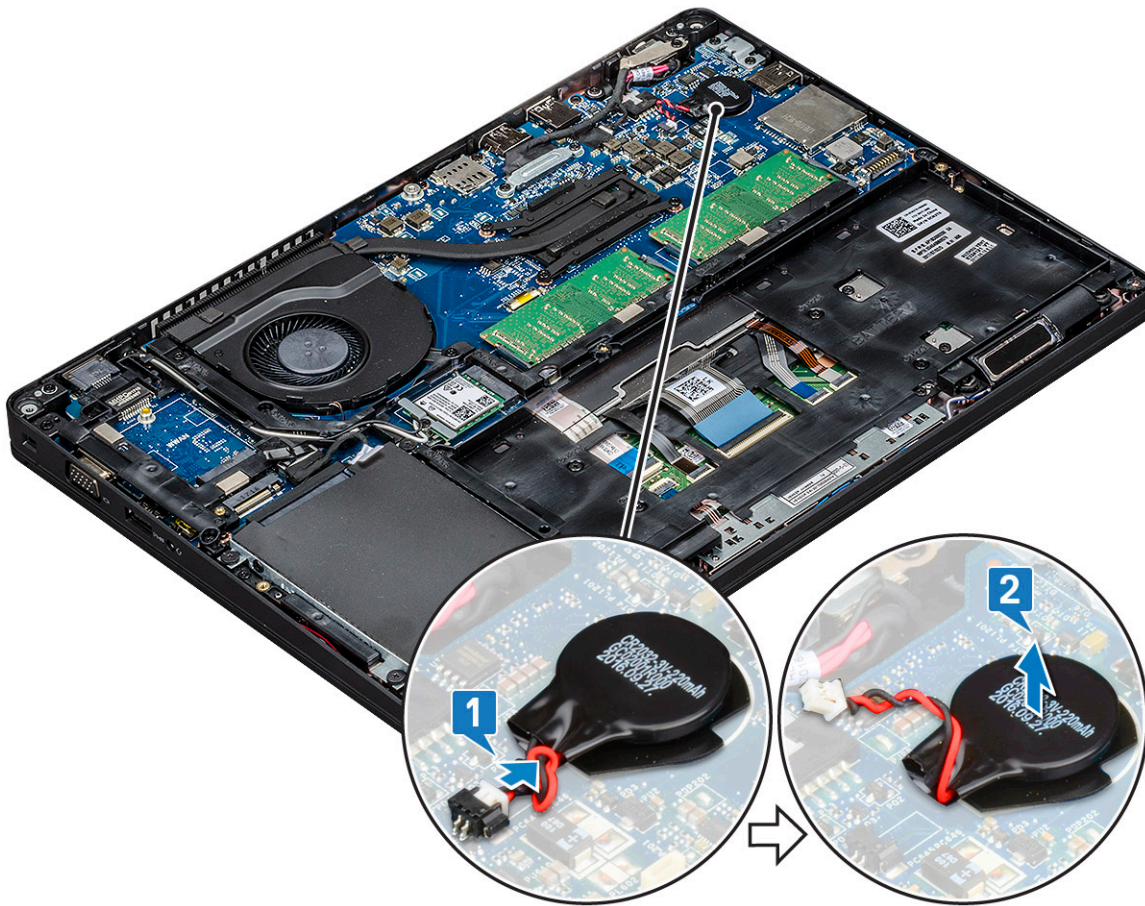
Installing hard drive

- 1 Insert the hard drive into the slot on the system.
- 2 Replace the four (M2 x 2.7) screws to secure the hard drive to the system.
- 3 Connect the hard drive cable to the connector on the system board.
- 4 Install the :
 - a [battery](#)
 - b [base cover](#)
- 5 Follow the procedures in [After working inside your system](#).

Coin-cell battery

Removing the coin cell battery

- 1 Follow the procedure in [Before working inside your computer](#).
- 2 Remove the :
 - a [base cover](#)
 - b [battery](#)
- 3 To remove the coin cell battery:
 - a Disconnect the coin cell battery cable from the connector on the system board [1].
 - b Lift the coin cell battery to release from the adhesive and lift it away from the system board [2].




Installing coin cell battery

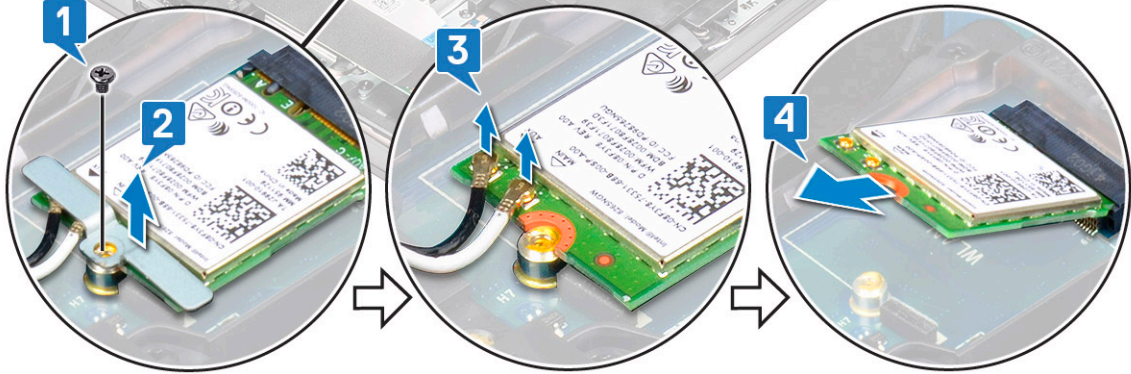
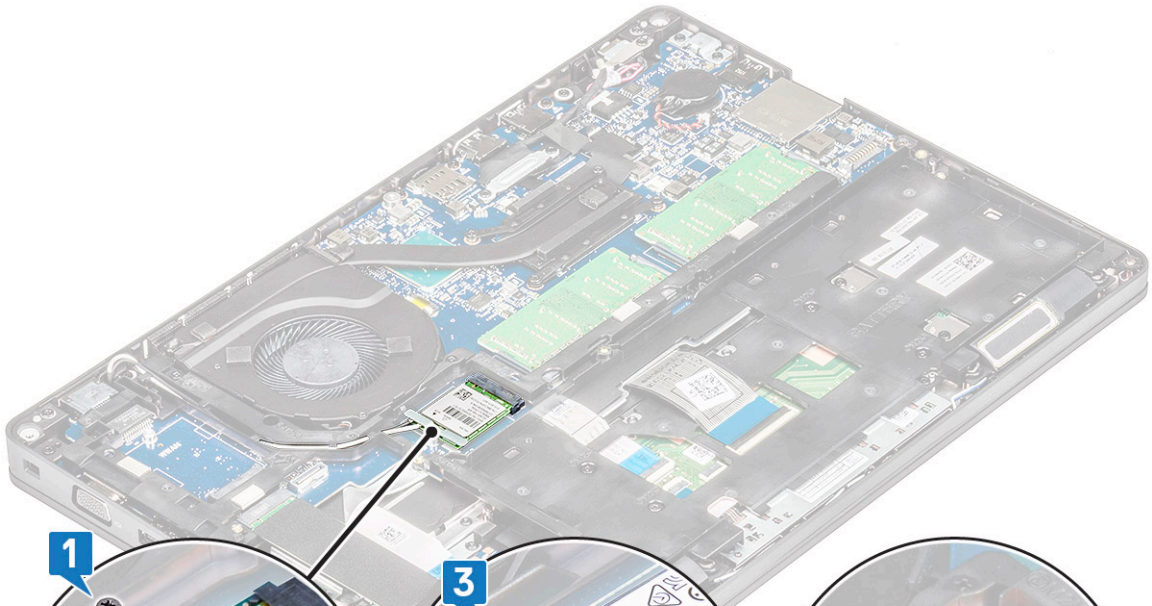
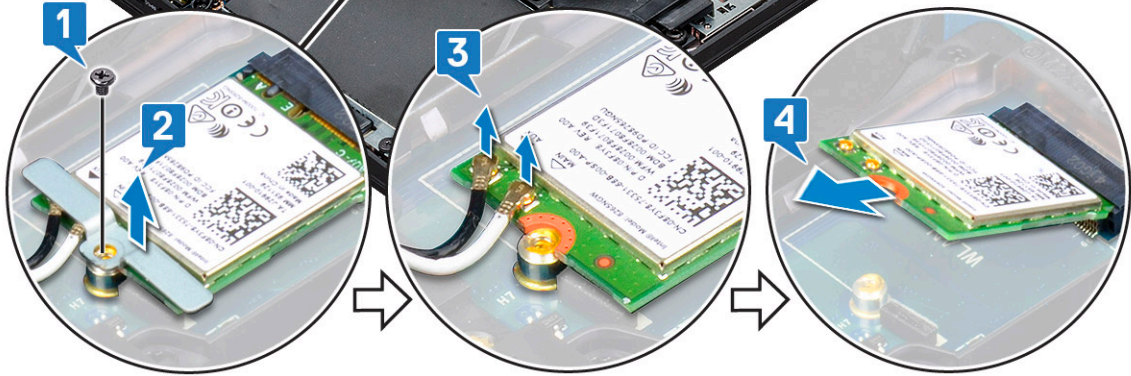
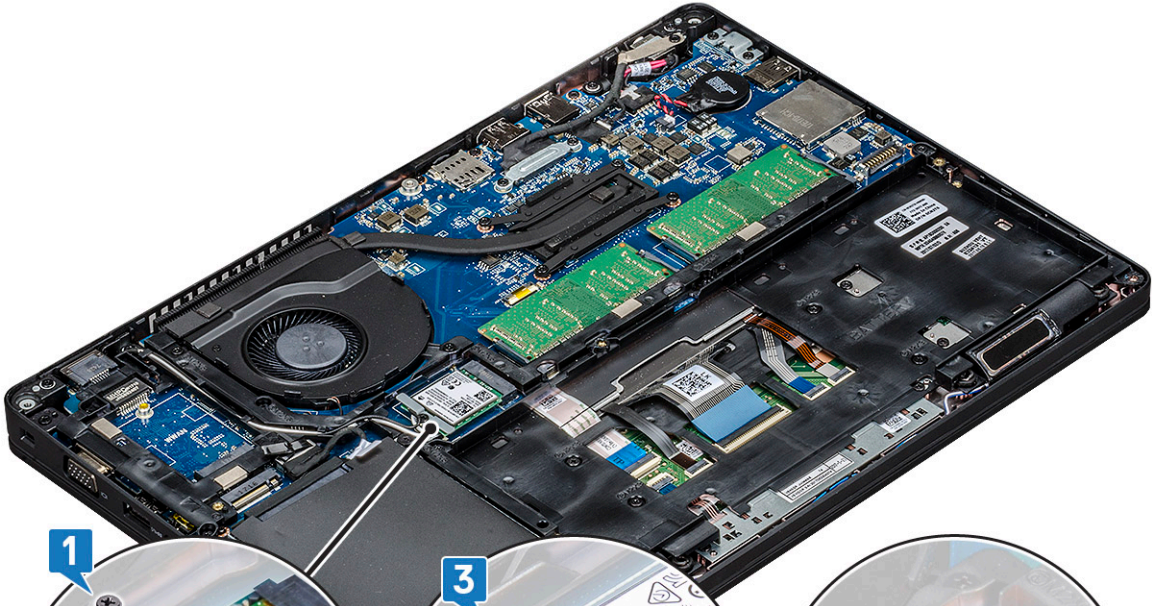
- 1 Affix the coin cell battery on the system board.
- 2 Connect the coin cell battery cable to the connector on the system board.
- 3 Install the :
 - a battery
 - b base cover
- 4 Follow the procedure in [After working inside your computer](#).

WLAN card

Removing WLAN card

- 1 Follow the procedure in [Before working inside your computer](#).
- 2 Remove the :
 - a base cover
 - b battery
- 3 To remove the WLAN card:
 - a Remove the M2x3 screw that secures the WLAN card bracket to the system [1].
 - b Remove the WLAN card bracket that secures the WLAN antenna cables [2].
 - c Disconnect the WLAN antenna cables from the connectors on the WLAN card [3].
 - d Lift the WLAN card away the connector as shown in the figure [4].

 **CAUTION:** There is an adhesive pad on the system board or chassis frame which helps secure the wireless card in place. When removing the wireless card from the system, make sure the adhesive pad stays on the system board/ chassis frame during the prying process. If the adhesive pad is removed from the system along with the wireless card, adhere it back to the system.



Installing WLAN card

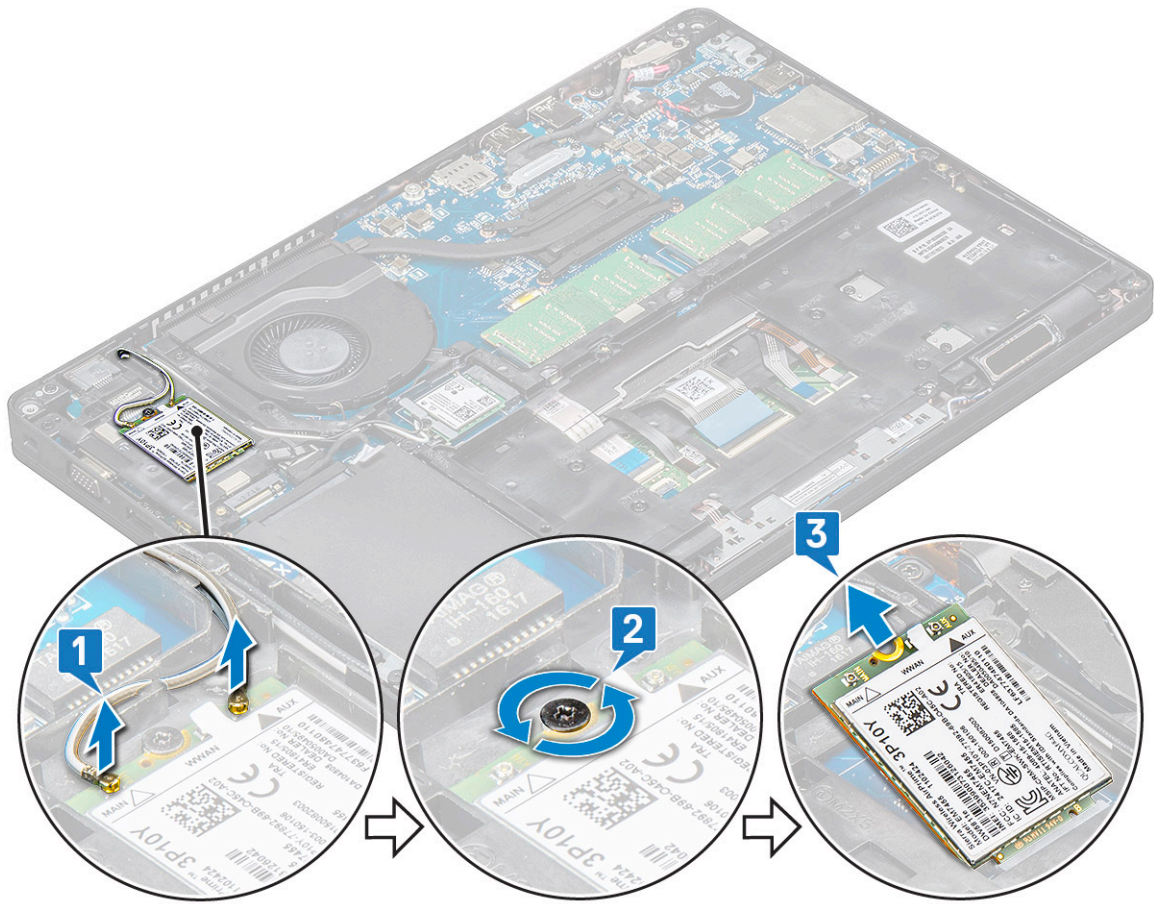
- 1 Insert the WLAN card into the connector on the system board.
- 2 Connect the WLAN antenna cables to the connectors on the WLAN card.
- 3 Place the WLAN card bracket to secure the WLAN cables.
- 4 Replace the M2x3 screw to secure the WLAN card to the system.
- 5 Install the :
 - a battery
 - b base cover
- 6 Follow the procedure in [After working inside your computer](#).

WWAN card – optional

This is optional as the system might not ship with WWAN card.

Removing the WWAN card

- 1 Follow the procedure in [Before working inside your computer](#).
- 2 Remove the :
 - a base cover
 - b battery
- 3 To remove the WWAN card:
 - a Disconnect the WWAN antenna cables from the connectors on the WWAN card [1].
 - b Remove the M2x3 screw that secures the WWAN card to the system [2]
 - c Slide and lift the WWAN card from the system [3].



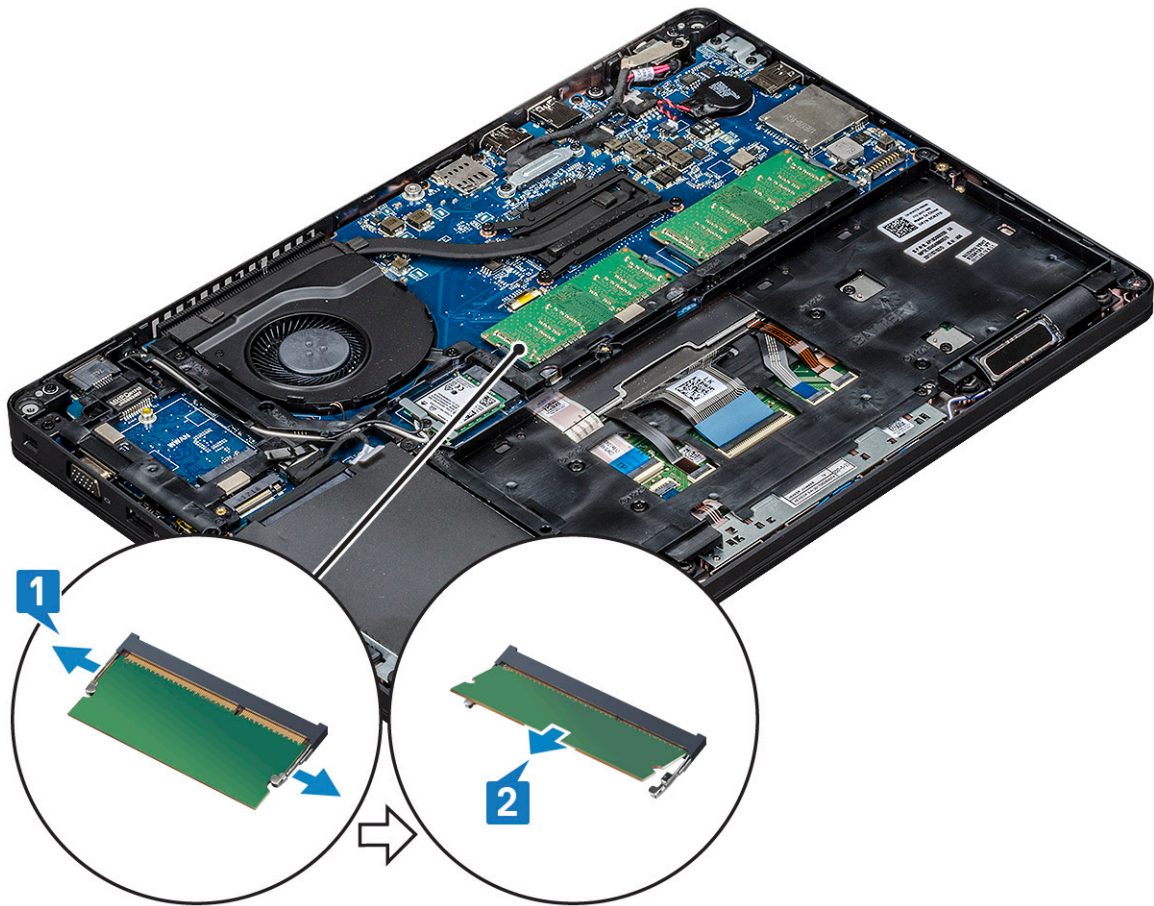
Installing the WWAN card

- 1 Insert the WWAN card into the slot on the system.
- 2 Connect the WWAN antenna cables to the connectors on the WWAN card.
- 3 Replace the screw (M2X3) to secure the WWAN card to the computer.
- 4 Install the :
 - a battery
 - b base cover
- 5 Follow the procedure in [After working inside your computer](#).

Memory modules

Removing the memory module

- 1 Follow the procedure in [Before working inside your computer](#).
- 2 Remove the :
 - a base cover
 - b battery
- 3 To remove the memory module:
 - a Pry the clips securing the memory module until the memory module pops-up [1].
 - b Lift the memory module from the connector [2].



Installing the memory module

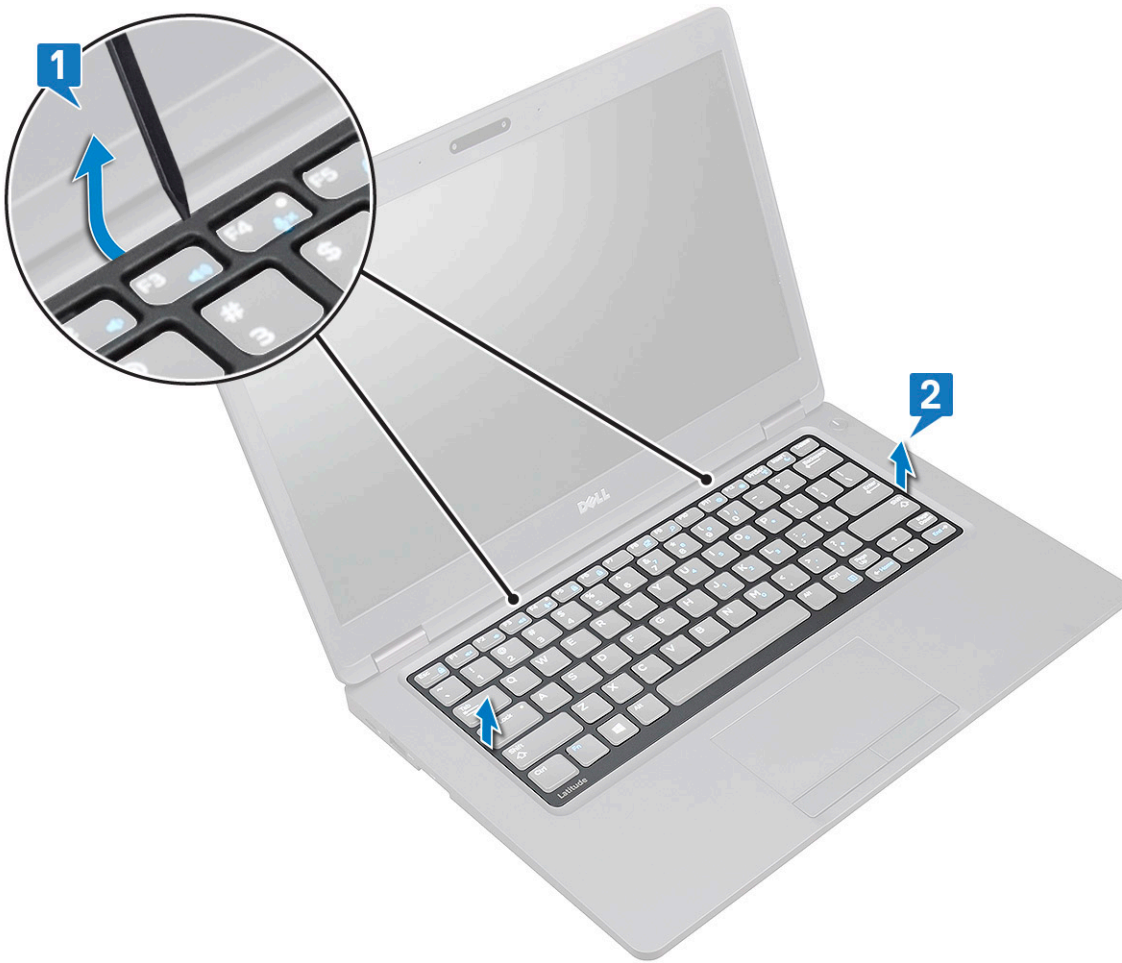
- 1 Insert the memory module into the memory connector at a 30 degree angle until the contacts are fully seated into the slot. Then, press the module until the clips secure the memory module.
- 2 Install the :
 - a [battery](#)
 - b [base cover](#)
- 3 Follow the procedure in [After working inside your computer](#).

Keyboard lattice and Keyboard

Removing keyboard lattice

- 1 Follow the procedure in [Before working inside your computer](#).
- 2 Pry the keyboard lattice from one of the recess points [1] and lift the lattice from the system [2].

NOTE: Gently pull or lift keyboard lattice in clockwise or anticlockwise direction to avoid breakage.



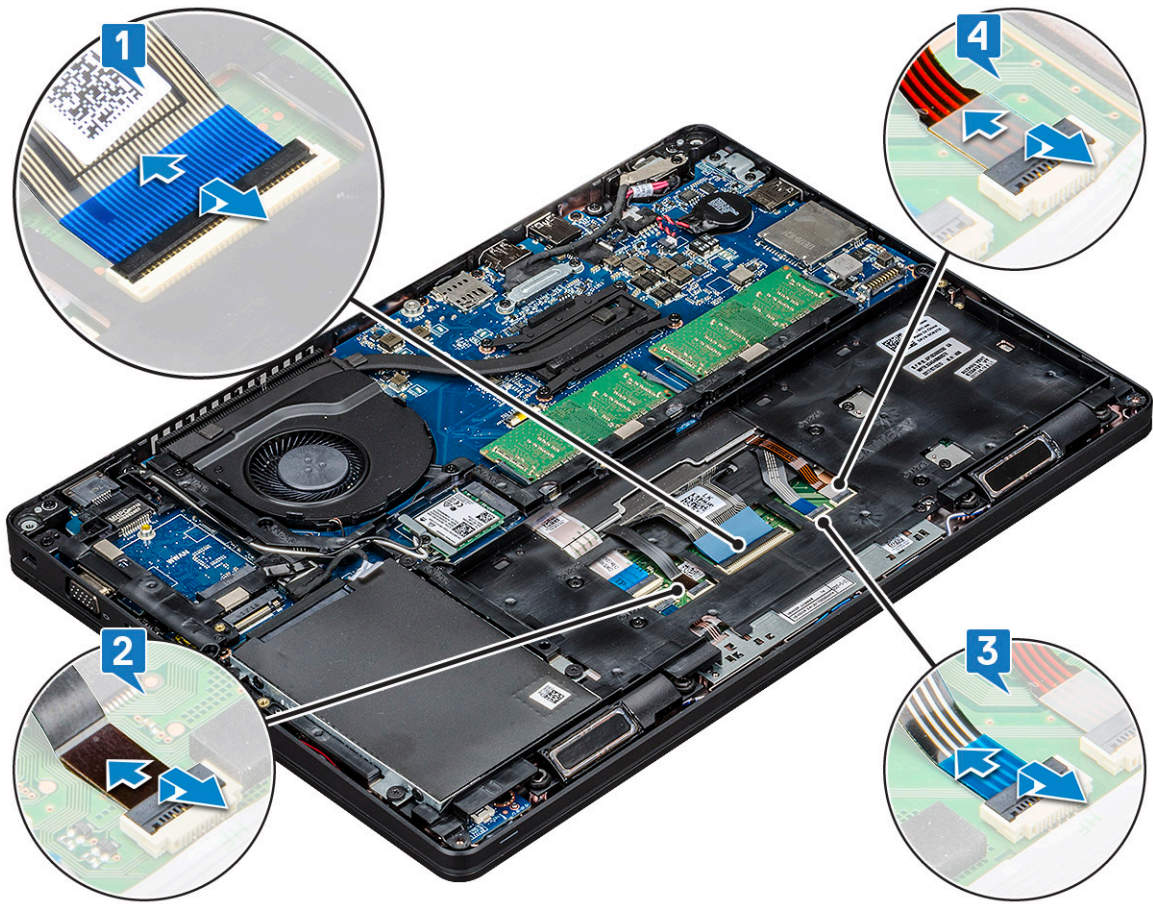
Installing keyboard lattice

- 1 Place the keyboard lattice on the keyboard and press along the edges and in between the rows of keys until the lattice clicks in place.
- 2 Follow the procedure in [After working inside your computer](#).

Removing the keyboard

- 1 Follow the procedure in [Before working inside your computer](#).
- 2 Remove the:
 - a [base cover](#)
 - b [battery](#)
 - c [keyboard lattice](#)
- 3 To remove the keyboard:
 - a Lift the latch and disconnect the keyboard cable from the connector on the system.
 - b Lift the latch and disconnect the keyboard backlight cables from the connectors on the system [2,3,4].

 **NOTE:** Number of cables to disconnect is based on the keyboard type.



- c Turn over the system and open the laptop in front view mode.
- d Remove the five (M2x2.5) screws that secure the keyboard to the system [1].
- e Flip the keyboard from the bottom and lift it from the system along with the keyboard cable and the keyboard back light cable [2].

⚠ WARNING: Gently pull the keyboard cable and the keyboard back light cables routed beneath the chassis frame to avoid damaging the cables.



Installing the keyboard

- 1 Hold the keyboard and route the keyboard cable and the keyboard backlight cables through the palmrest in the system.
- 2 Align the keyboard with the screw holders on the system.
- 3 Replace the five (M2x2.5) screws to secure the keyboard to the system.
- 4 Turn the system over and connect the keyboard cable and the keyboard backlight cable to the connector in the system.

NOTE: When reinstalling the chassis frame ensure the keyboard cables are NOT under the lattice , but run through the opening in the frame before connecting them to system board.

- 5 Install the:
 - a keyboard lattice
 - b battery
 - c base cover
- 6 Follow the procedure in [After working inside your computer](#).

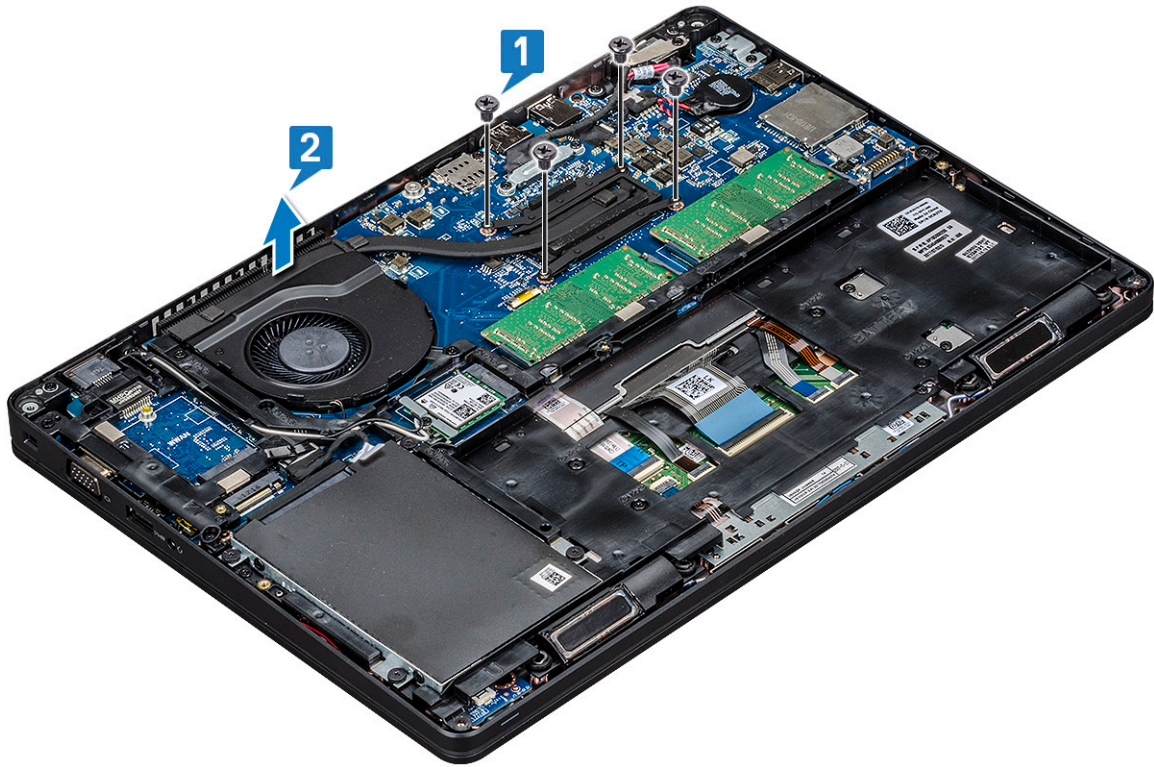
Heat sink

Removing the heat sink

NOTE: This procedure is only for the UMA model.

- 1 Follow the procedure in [Before working inside your computer](#).
- 2 Remove the :
 - a base cover
 - b battery
- 3 To remove the heat sink :
 - a Remove the four (M2x3) screws that secure the heat sink on the system board [1].

NOTE: Remove the heat sink screws in sequential order as indicated on the heat-sink.
 - b Lift the heat sink from the system [2].



Installing the heat sink

NOTE: This procedure is only for the UMA model.

- 1 Place the heat sink on the system board.
- 2 Replace the four (M2x3) screws that secure the heat sink on the system board.

NOTE:

- Replace the heat sink screws in sequential order as indicated on the heat-sink.

- 3 Install the :
 - a battery
 - b base cover
- 4 Follow the procedure in [After working inside your computer](#).

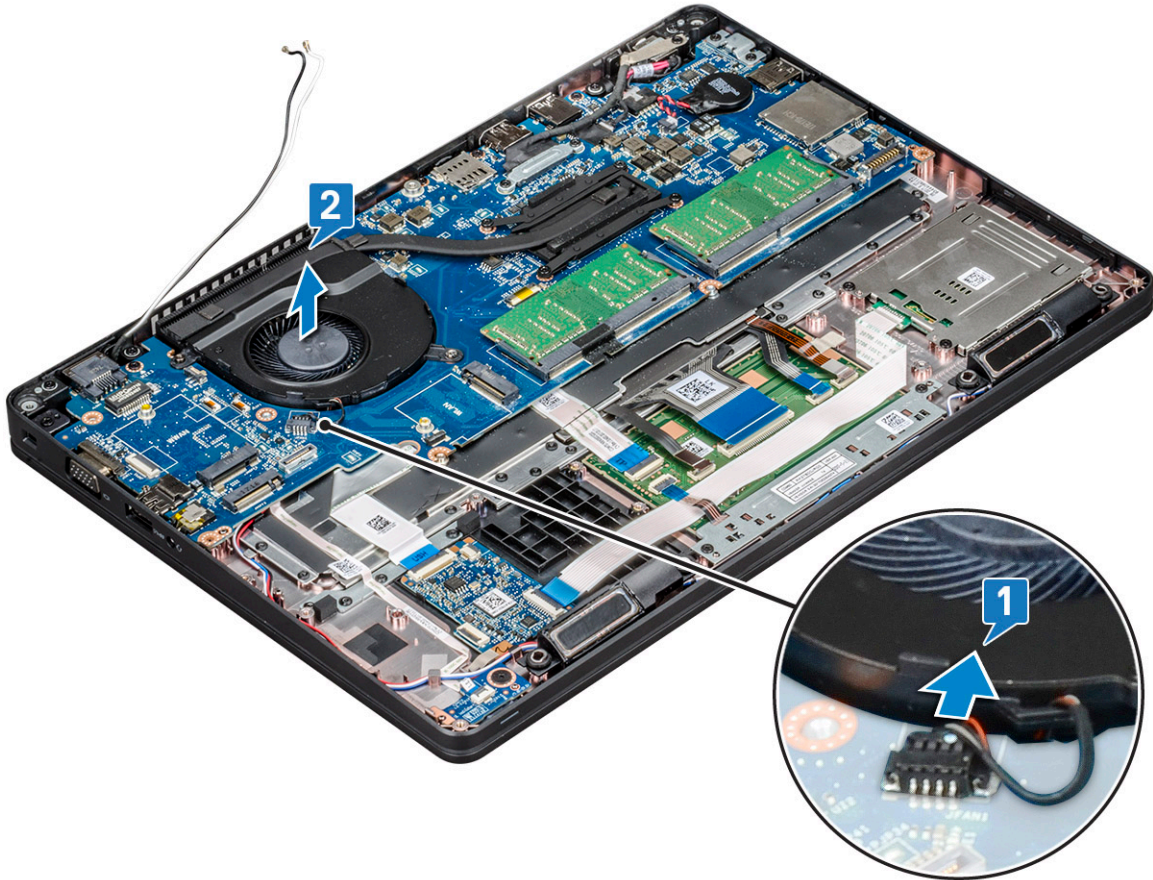
System fan

Removing the system fan

NOTE: This procedure is only for the UMA model

- 1 Follow the procedure in [Before working inside your computer](#).
- 2 Remove the:
 - a base cover
 - b battery
 - c hard drive
 - d SSD card
 - e SSD frame

- f WLAN card
 - g WWAN card (optional)
 - h chassis frame
- 3 To remove the system fan:
- a Disconnect the system fan cable from the connector on the system board [1].
 - b Lift the system fan away from the computer [2].



Installing the system fan

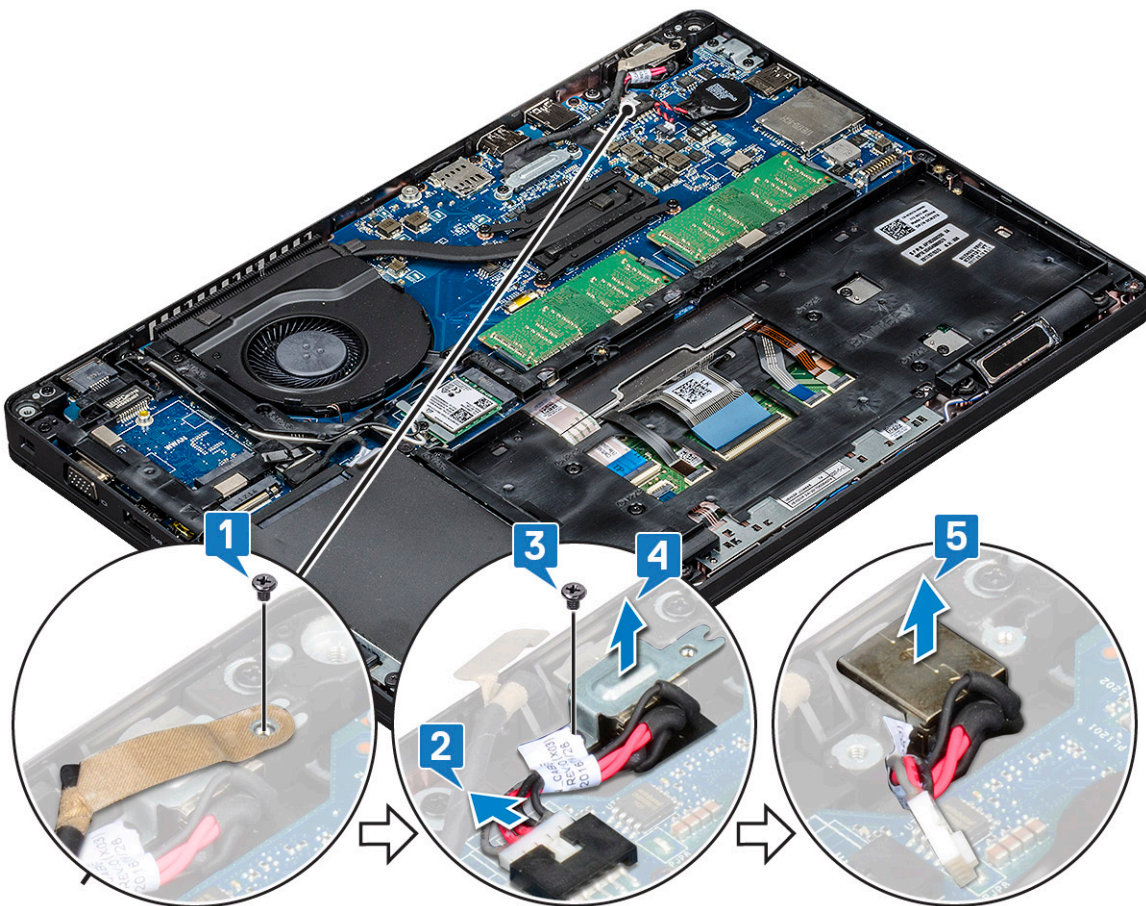
NOTE: This procedure is only for the UMA model

- 1 Place the system fan into the slot on the computer.
- 2 Connect the system fan cable to the connector on the system board.
- 3 Install the:
 - a chassis frame
 - b WWAN card (optional)
 - c WLAN card
 - d SSD frame
 - e SSD card
 - f hard drive
 - g battery
 - h base cover
- 4 Follow the procedure in [After working inside your computer](#).

Power connector port

Removing the power connector port

- 1 Follow the procedure in [Before working inside your computer](#).
- 2 Remove the :
 - a [base cover](#)
 - b [battery](#)
- 3 To remove the power connector port:
 - a Remove the screw that secures the display cable on the system board [1].
 - b Disconnect the power connector cable from the connector on the system board [2].
 - c Remove the M2x3 screw to release the power connector bracket that secures the power connector port to your system [3].
 - d Remove the power connector bracket from the system [4].
 - e Pull the power connector port, and lift it from the system [5].



Installing power connector port

- 1 Align the power connector port along the grooves on the slot and push it down.
- 2 Place the metal bracket on the power connector port.
- 3 Replace the (M2x3) screw to secure the power connector bracket to the power connector port.
- 4 Connect the power connector cable to the connector on the system board.
- 5 Replace the screw that secures the display cable on the system board.

- 6 Install the :
 - a battery
 - b base cover
- 7 Follow the procedure in [After working inside your computer.](#)

Chassis frame

Removing the chassis frame

- 1 Follow the procedure in [Before working inside your computer.](#)
- 2 Remove the:

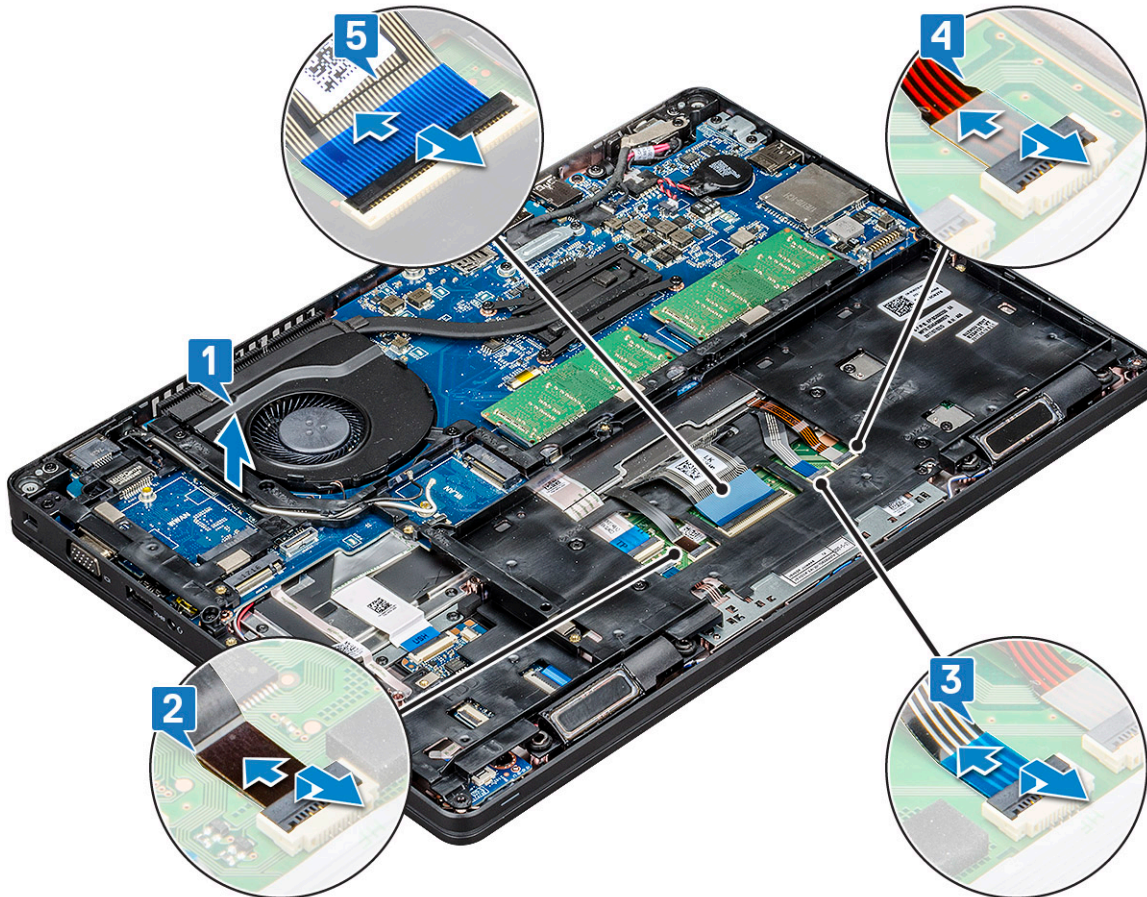
- a base cover
- b battery
- c hard drive
- d SSD card
- e SSD frame
- f WLAN card
- g WWAN card (optional)

NOTE: There are two different screw sizes for chassis frame: M2x5 8ea and M2x3 5ea

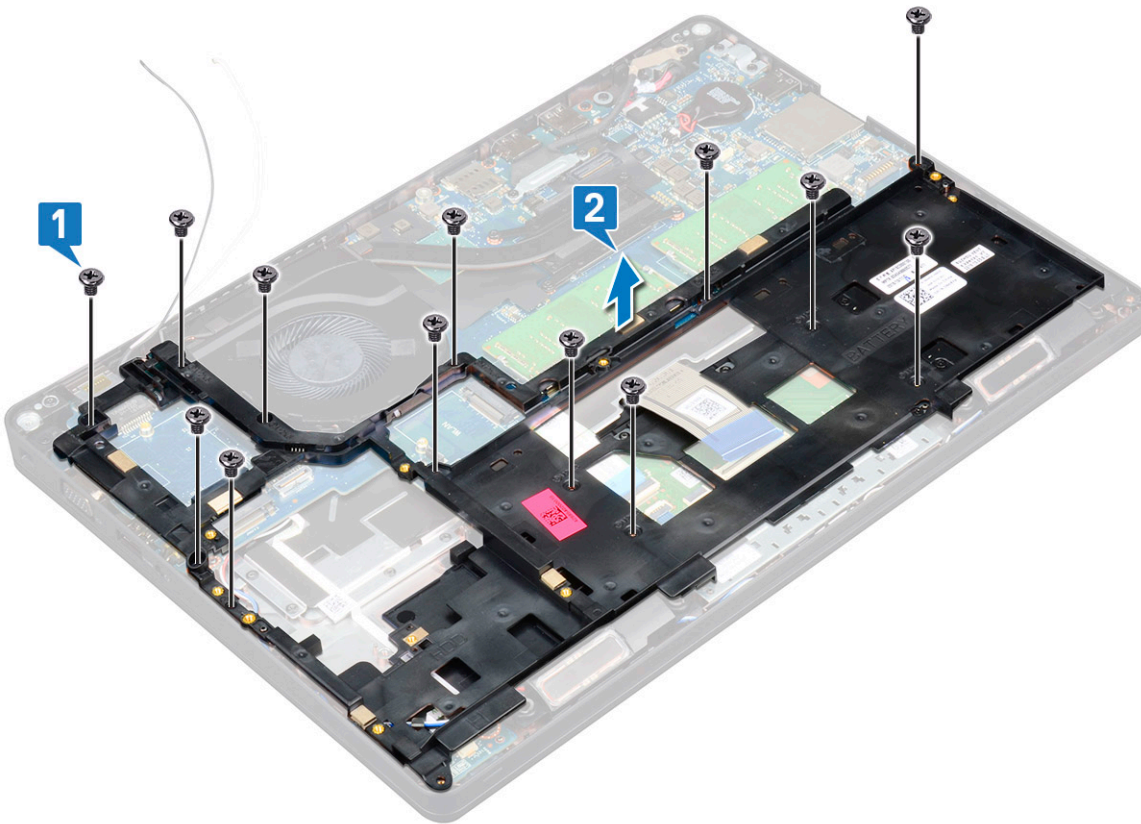
- 3 To release the chassis frame:

- a Unroute the WLAN cables from the routing channels [1].
- b Lift the latch and disconnect the keyboard backlight cable and the keyboard cable from their connectors [2,3,4,5] on the system.

NOTE: There may be more than one cable to disconnect based on the keyboard type.



- 4 To remove the chassis frame:
 - a Remove the five (M2x3) screws and eight (M2x5) screws that secure the chassis frame to the system [1].
 - b Lift the chassis frame from the system [2].



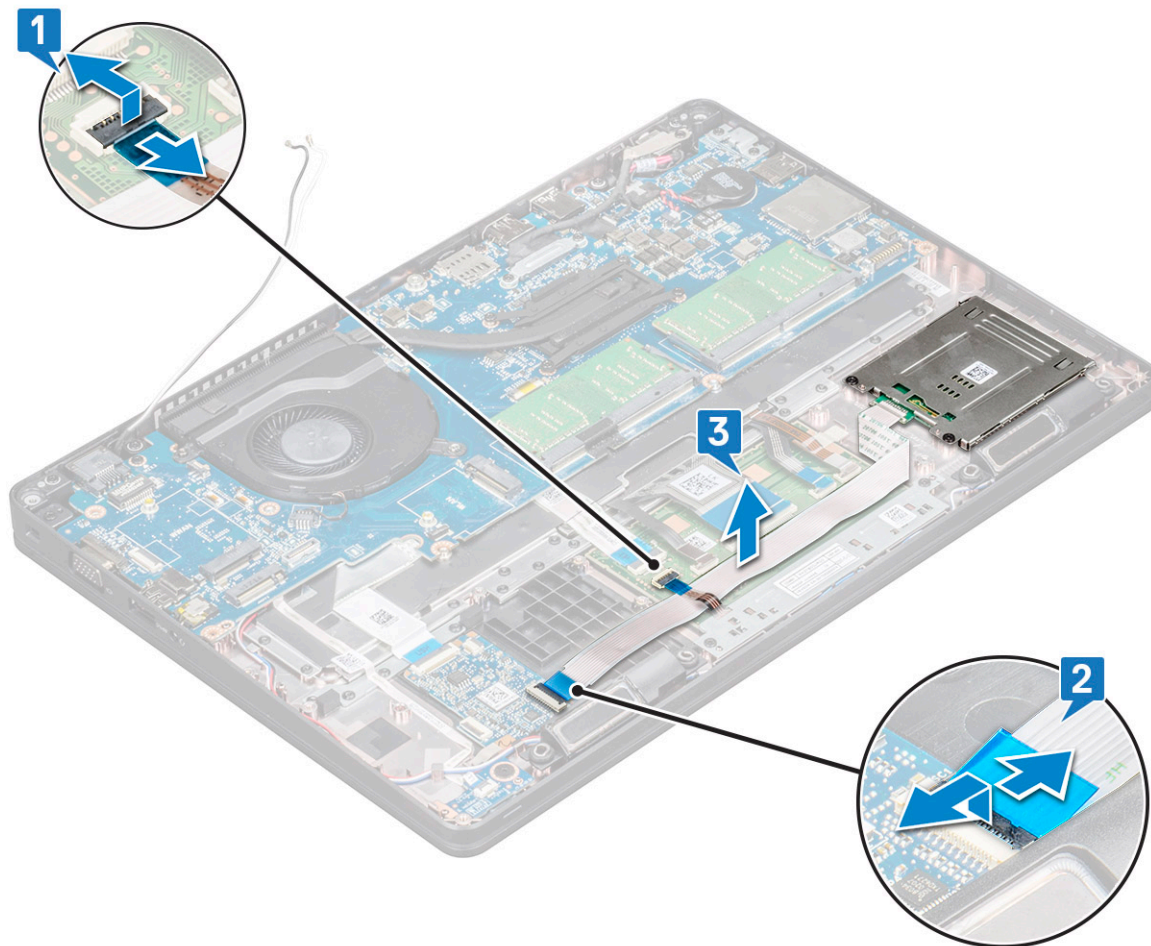
Installing the chassis frame

- 1 Place the chassis frame into the slot on the system.
 - ⓘ **NOTE:** Gently pull the keyboard cable and keyboard back light cables through the spacing in the chassis frame before placing the chassis frame in the slot on the system.
- 2 Replace the five (M2x3) screws and eight (M2x5) screws to secure the chassis frame to the system.
- 3 Connect the keyboard cable and the keyboard backlight cable to their connectors on the system.
 - ⓘ **NOTE:** There may be more than one cable to connect based on keyboard types.
- 4 Route the WLAN cables through the routing channels.
- 5 Install the:
 - a WWAN card (optional)
 - b WLAN card
 - c SSD frame
 - d SSD card
 - e hard drive
 - f battery
 - g base cover
- 6 Follow the procedure in [After working inside your system](#).

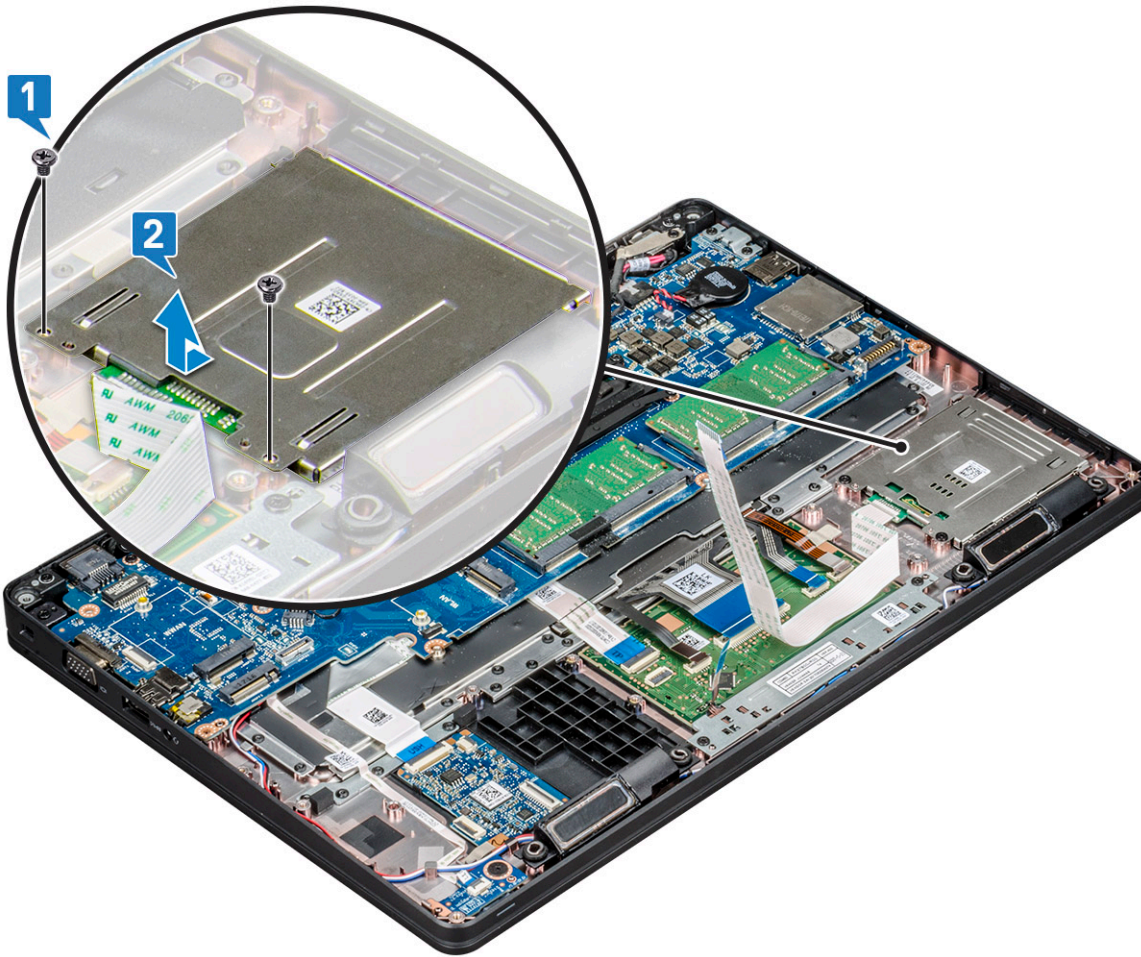
SmartCard module

Removing smart card reader board

- 1 Follow the procedure in [Before working inside your computer](#).
- 2 Remove the:
 - a [base cover](#)
 - b [battery](#)
 - c [hard drive](#)
 - d [SSD card](#)
 - e [SSD frame](#)
 - f [WLAN card](#)
 - g [WWAN card \(optional\)](#)
 - h [chassis frame](#)
- 3 To release the smart card reader board:
 - a Lift the latch and disconnect the touchpad cable from the connector [1].
 - b Lift the latch and disconnect the smart card reader board cable from the connector [2].
 - c Peel the cable from the palmrest [3].



- 4 To remove the smart card reader board:
 - a Remove the 2 (M2x3) screws that secure the smart card reader board to the palmrest [1].
 - b Slide and lift the smart card reader from the slot in the system [2].



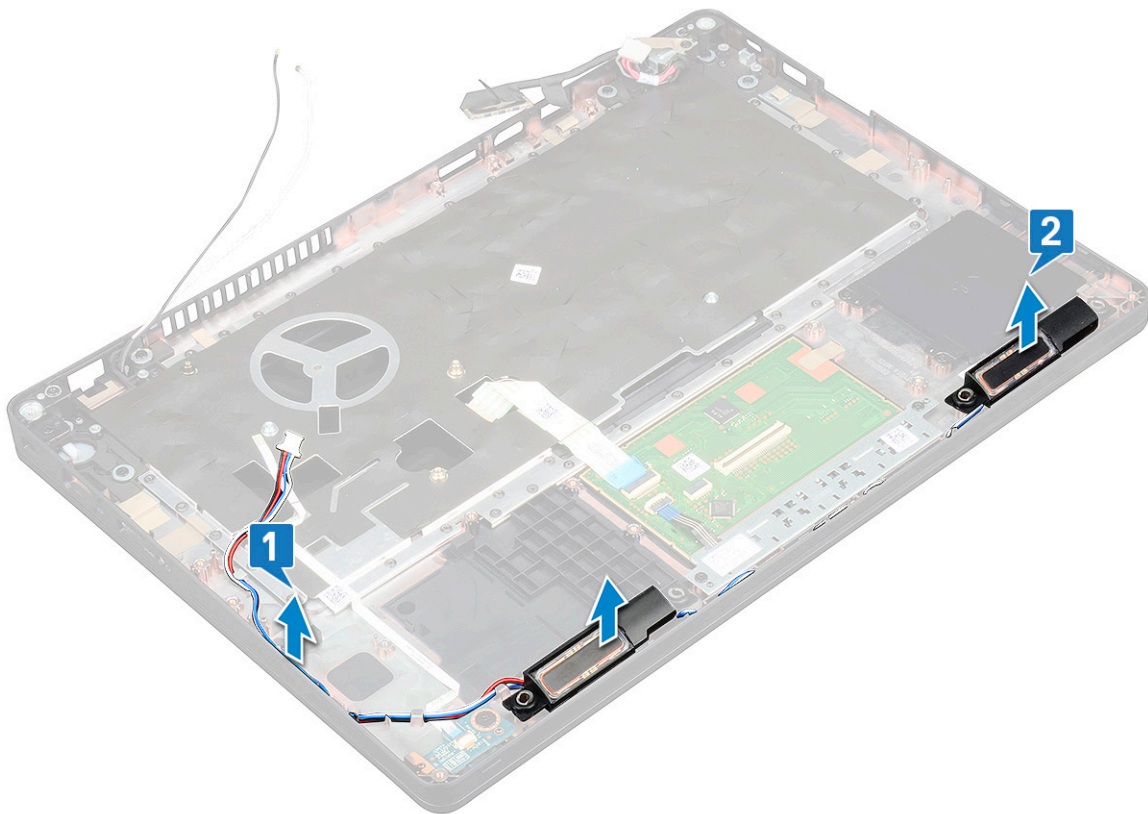
Installing smart card reader board

- 1 Insert the smart card reader board to align with the tabs on the chassis.
- 2 Replace the 2 (M2x3) screws to secure the smart card reader board to the system.
- 3 Connect the touchpad cable to its connector on the system board.
- 4 Affix the smart card reader board cable and connect the cable to the connector.
- 5 Install the:
 - a chassis frame
 - b WWAN card (optional)
 - c WLAN card
 - d SSD frame
 - e SSD card
 - f hard drive
 - g battery
 - h base cover
- 6 Follow the procedure in [After working inside your computer](#).

Speaker

Removing the speaker

- 1 Follow the procedure in [Before working inside your computer](#).
- 2 Remove the:
 - a base cover
 - b battery
 - c memory module
 - d hard drive
 - e SSD card
 - f SSD frame
 - g WLAN card
 - h WWAN card (optional)
 - i keyboard lattice
 - j keyboard
 - k chassis frame
 - l system board
- 3 To remove the speakers:
 - a Release the speaker cable through the routing channels [1].
 - b Lift the speaker away from the computer [2].



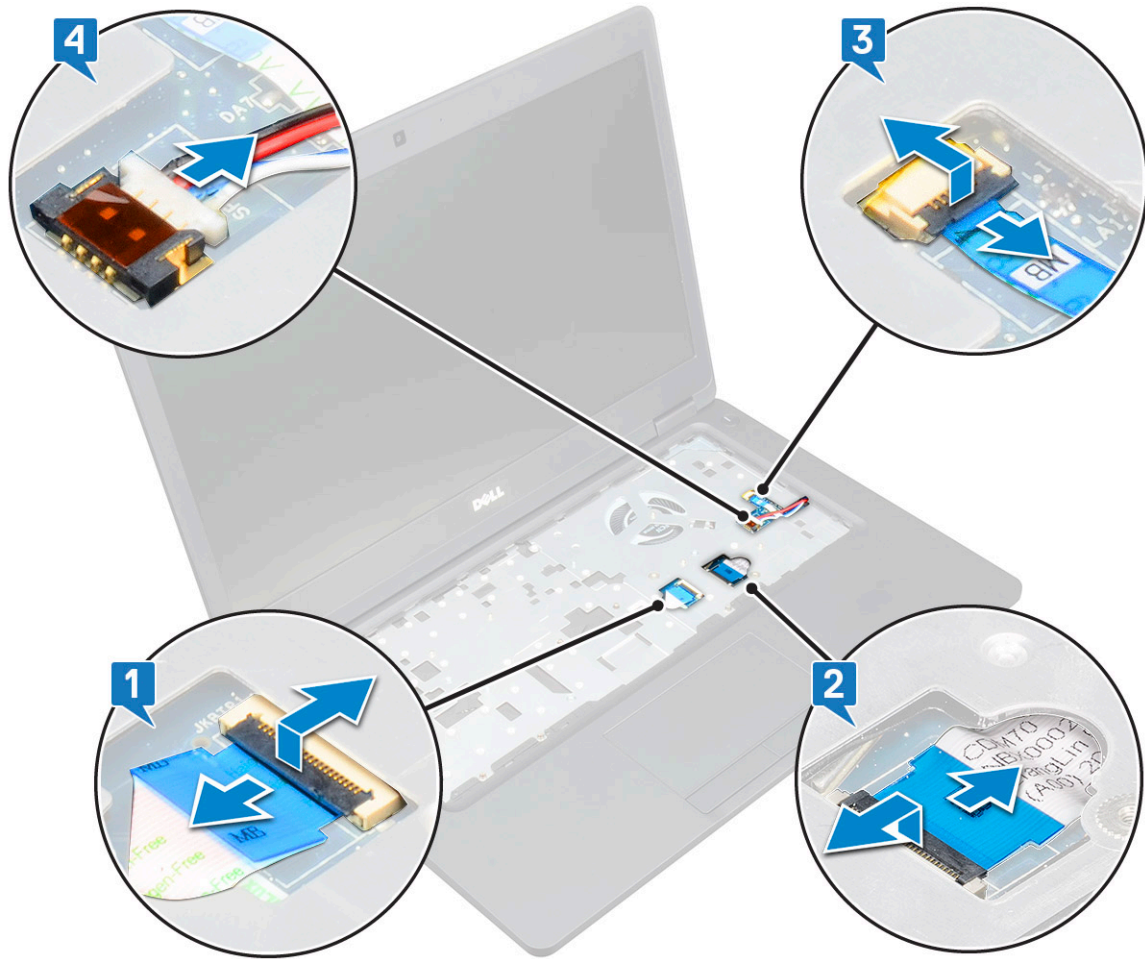
Installing the speaker

- 1 Insert the speaker module aligning it with the nodes on the chassis.
- 2 Route the speaker cable through the routing channels.
- 3 Install the:
 - a [system board](#)
 - b [chassis frame](#)
 - c [keyboard](#)
 - d [keyboard lattice](#)
 - e [WLAN card](#)
 - f [SSD frame](#)
 - g [SSD card](#)
 - h [hard drive](#)
 - i [memory module](#)
 - j [battery](#)
 - k [base cover](#)
 - l [SIM card](#)
- 4 Follow the procedure in [After working inside your computer](#).

System board

Removing system board

- 1 Follow the procedure in [Before working inside your computer](#).
- 2 Remove the:
 - a [SIM card](#)
 - b [base cover](#)
 - c [battery](#)
 - d [memory module](#)
 - e [hard drive](#)
 - f [SSD card](#)
 - g [SSD frame](#)
 - h [WLAN card](#)
 - i [WWAN card \(optional\)](#)
 - j [keyboard lattice](#)
 - k [keyboard](#)
 - l [heat sink](#)
 - m [chassis frame](#)
 - n [system fan](#)
- 3 Disconnect the following cables from the system board:
 - a Touchpad cable [1]
 - b USH cable [2]
 - c LED board cable [3]
 - d Speaker cable [4]

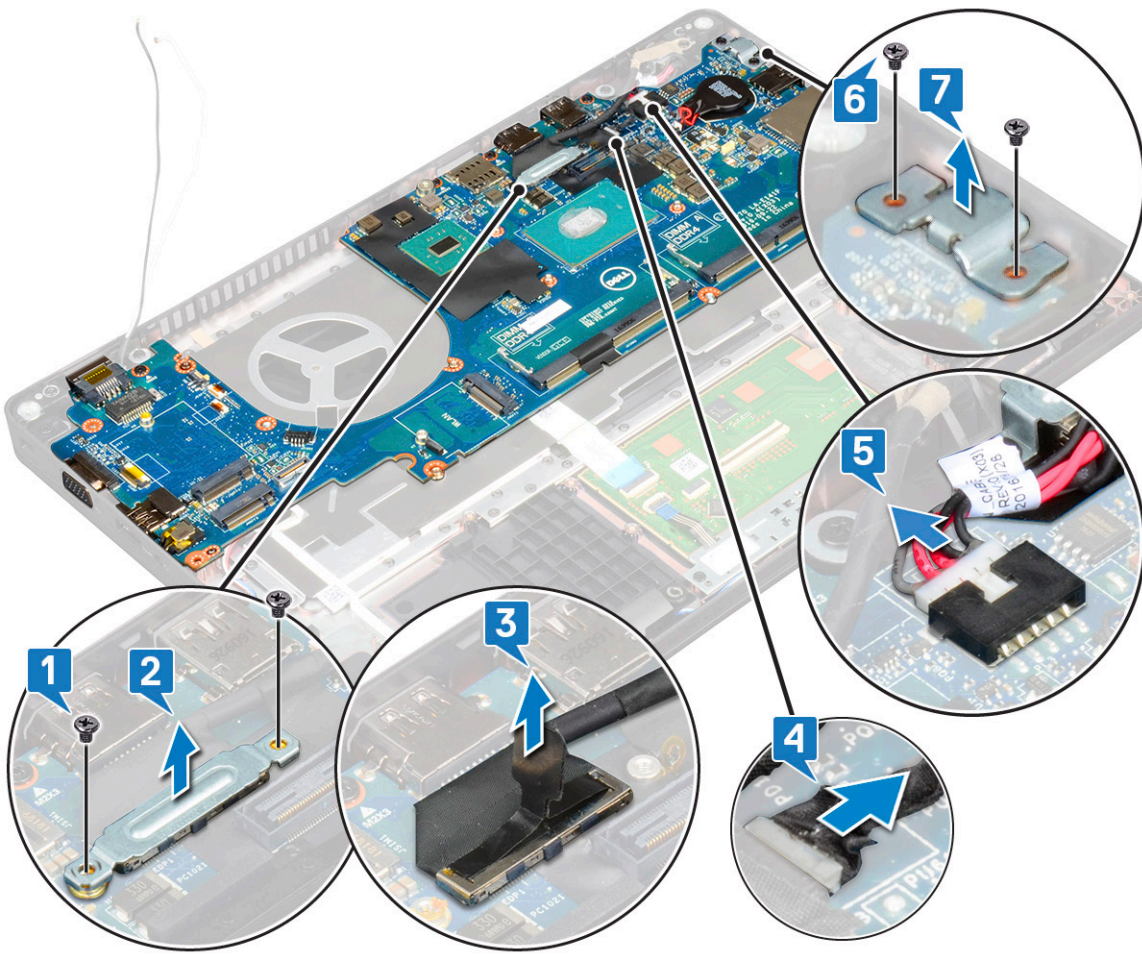


4 To release the system board:

- a Flip over the system and remove the two M2x3 screws that secure the display cable bracket in place [1].
- b Lift the metal display cable bracket from the system [2].
- c Disconnect the display cables from the connectors on the system board [3,4].
- d Disconnect the power connector port cable from the connector on the system board [5].
- e Remove the two M2x5 screws that secure the Type-C USB bracket in place [6].

NOTE: The metal bracket secures the DisplayPort over USB Type-C.

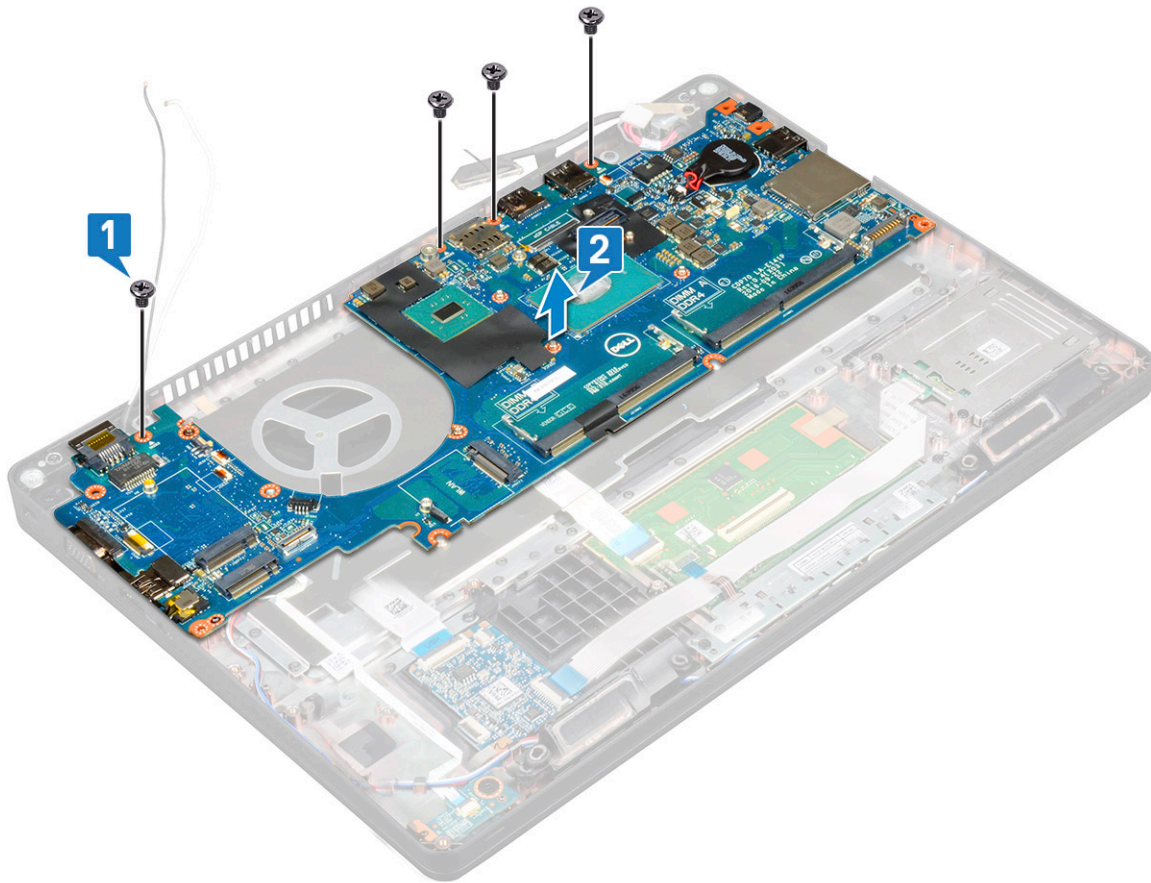
- f Lift the metal bracket away from the system [7].



5 To remove the system board:

NOTE: Ensure SIM card tray is removed

- a Remove the four (M2x3) screws that secure the system board in place [1].
- b Lift the system board away from the system [2].



Installing system board

- 1 Align the system board with the screw holders on the computer.
- 2 Replace the four (M2x3) screws to secure the system board to the system.
- 3 Place the metal bracket to secure the DisplayPort over USB Type-C.
- 4 Replace the two (M2x3) screws to secure the metal bracket on the DisplayPort over USB Type-C.
- 5 Connect the power connector port cable to the connector on the system board.
- 6 Connect the display cables to the connectors on the system board.
- 7 Place the display cable metal bracket over the display cable.
- 8 Replace the two M2x3 screws to secure the metal bracket.
- 9 Flip over the system and open the system in working mode.
- 10 Connect the following cables:
 - a Touchpad cable
 - b LED board cable
 - c USH board cable
 - d speaker cable
- 11 Install the:
 - a [system fan](#)
 - b [chassis frame](#)
 - c [heat sink](#)
 - d [keyboard](#)
 - e [keyboard lattice](#)
 - f [WWAN card \(optional\)](#)
 - g [WLAN card](#)

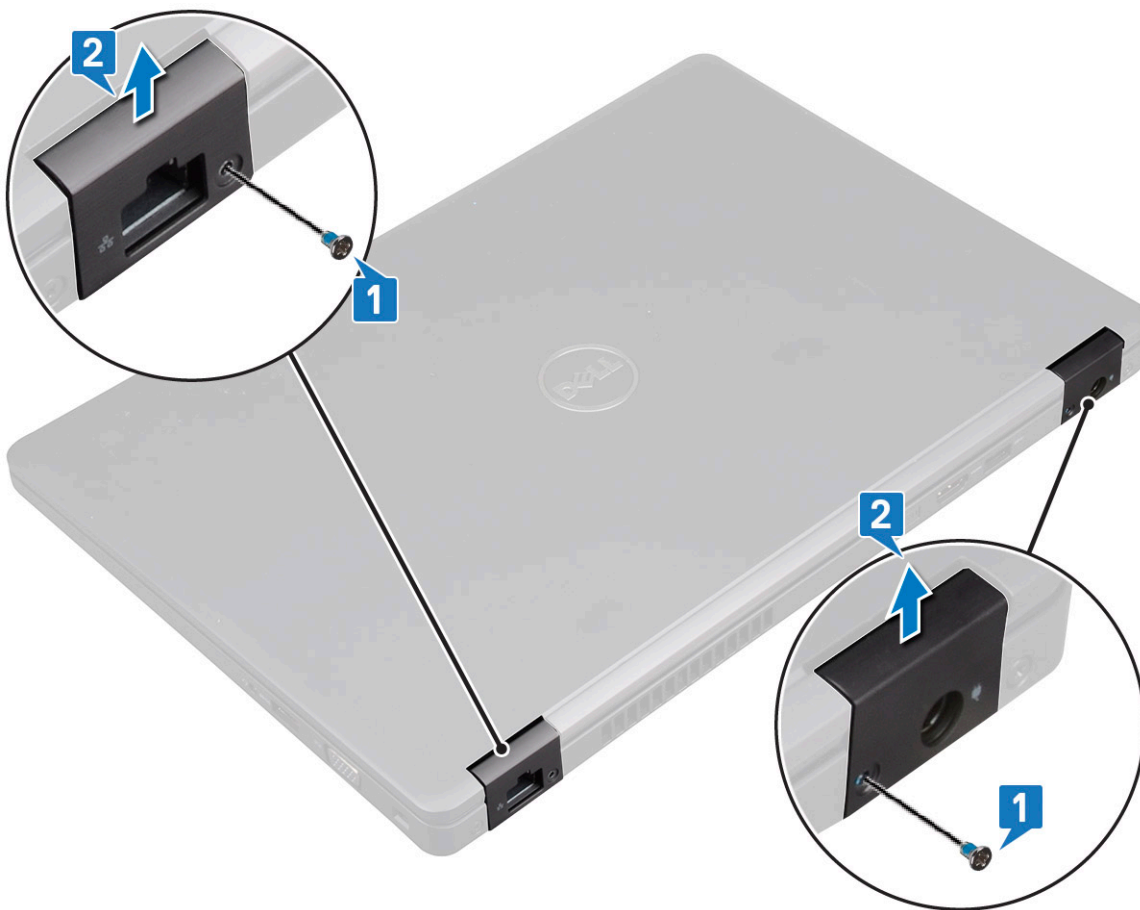
- h SSD frame
- i SSD card
- j hard drive
- k memory module
- l battery
- m base cover
- n SIM card

12 Follow the procedure in [After working inside your computer](#).

Display hinge cover

Removing display hinge cover

- 1 Follow the procedure in [Before working inside your computer](#).
- 2 Remove the:
 - a [base cover](#)
 - b [battery](#)
- 3 To remove the display hinge cover:
 - a Remove the M2x3 screw that secures the display hinge cover to the chassis [1].
 - b Lift the display hinge cover away from the display hinge [2].
 - c Repeat step a and step b to remove the other display hinge cover.



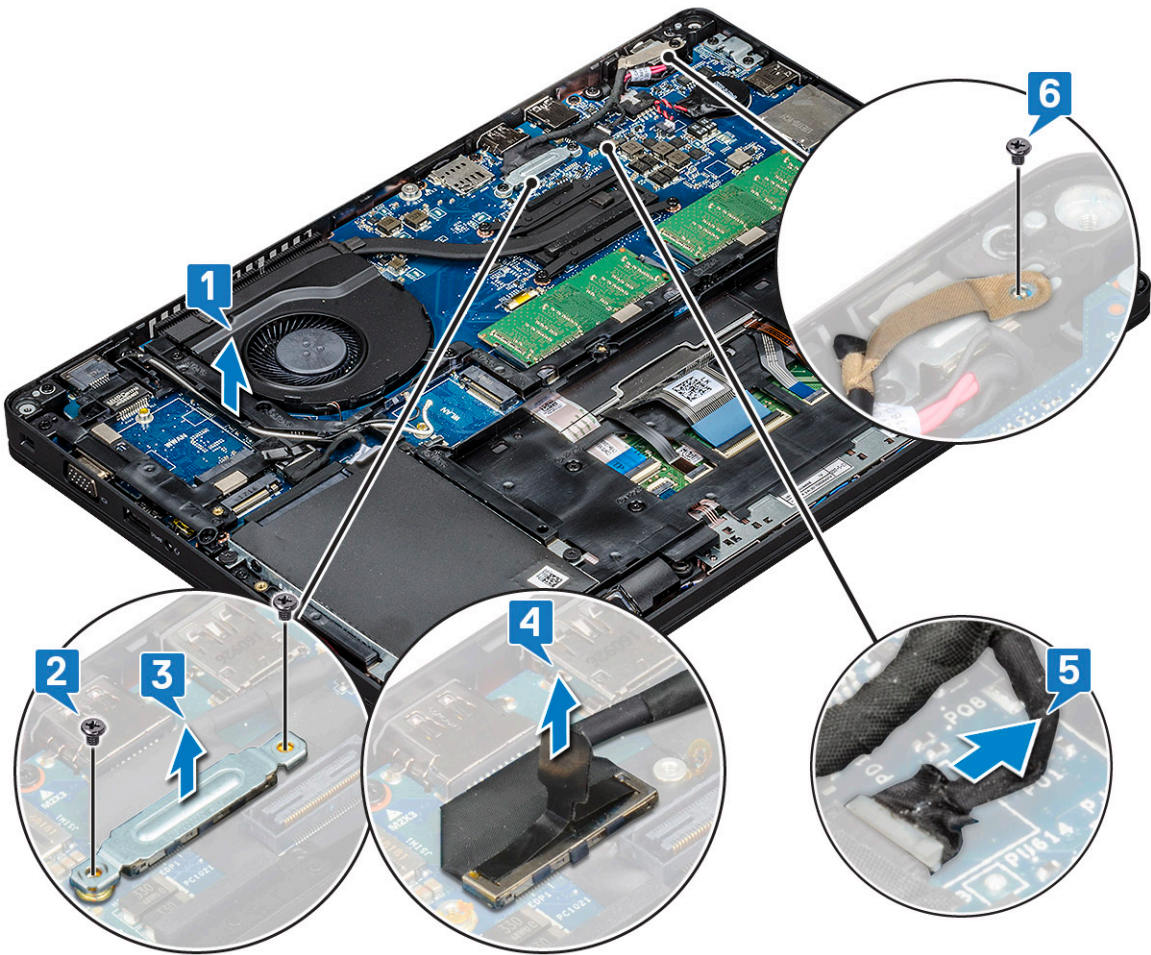
Installing display hinge cover

- 1 Place the display hinge cover on the display hinge.
- 2 Replace the M2x3 screw to secure the display hinge cover to the display hinge.
- 3 Repeat step 1 and step 2 to install the other display hinge cover.
- 4 Install the:
 - a [battery](#)
 - b [base cover](#)
- 5 Follow the procedure in [After working inside your computer](#).

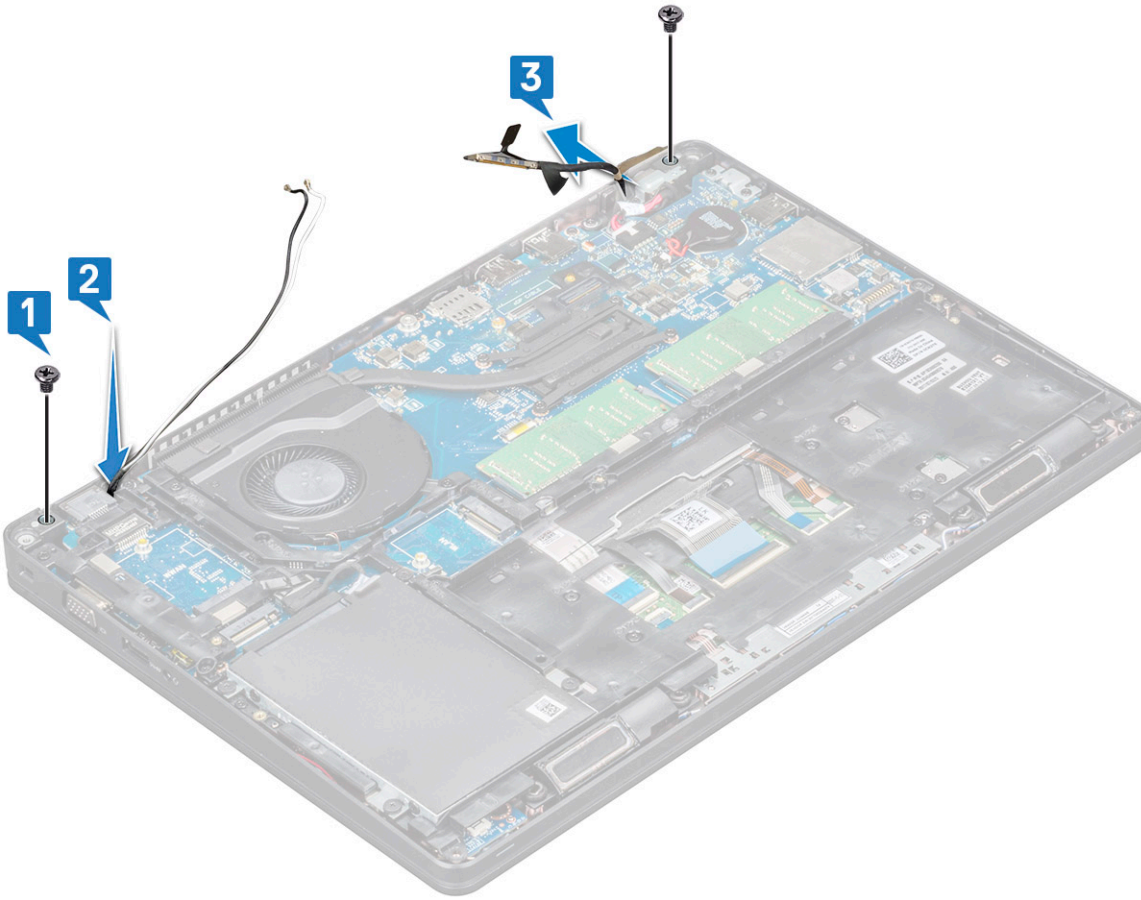
Display assembly

Removing display assembly

- 1 Follow the procedure in [Before working inside your computer](#).
- 2 Remove the:
 - a [base cover](#)
 - b [battery](#)
 - c [WLAN card](#)
 - d [WWAN card \(optional\)](#)
 - e [display hinge cover](#)
- 3 To disconnect the display cable:
 - a Release the WLAN and WWAN cables from the routing channels [1].
 - b Remove the two (M2x3) screws that secure the display cable bracket in place [2].
 - c Remove the display cable bracket that secures the display cable from the system [3].
 - d Disconnect the display cables from their respective connectors on the system board [4,5].
 - e Remove the single screw that secure the power connector bracket and also the display cable to the system [6].



- 4 To release the display assembly:
- a Remove the two M2x5 screws that secure the display assembly to the computer [1].
 - b Release the WLAN cable and display cable through the routing channels [2] [3].



- 5 Turn over the computer.
- 6 To remove the display assembly:
 - a Remove the two M2x5 screws that secure the display assembly to the computer .
 - b Open the display .



c Lift the display assembly from the computer.



Installing display assembly

- 1 Place the chassis on a plane surface.
- 2 Align the display assembly with the screw holders on the system and place it on the chassis.
- 3 Close the display.
- 4 Replace the two screws that secure the display assembly.
- 5 Replace the screws that secure the power connector bracket and the display cable to the system.
- 6 Flip over the system and replace two screws to secure the display assembly to the system.
- 7 Replace the single screw that secure the power connector bracket and the display cable to the system.
- 8 Connect the display cables to the connectors on the system board.
- 9 Place the metal bracket to secure the display cable.
- 10 Replace the (M2x3) screws to secure the metal bracket to the system.
- 11 Route the WLAN and WWAN cables through the routing channels.
- 12 Install the:
 - a [hinge cover](#)
 - b [WWAN card \(optional\)](#)
 - c [WLAN card](#)
 - d [battery](#)
 - e [base cover](#)
- 13 Follow the procedure in [After working inside your computer](#).

Display bezel

Removing display bezel

1 Follow the procedure in [Before working inside your computer](#).

2 Remove the:

- a base cover
- b battery
- c WLAN card
- d WWAN card (optional)
- e Display hinge cover
- f display assembly

3 To remove the display bezel:

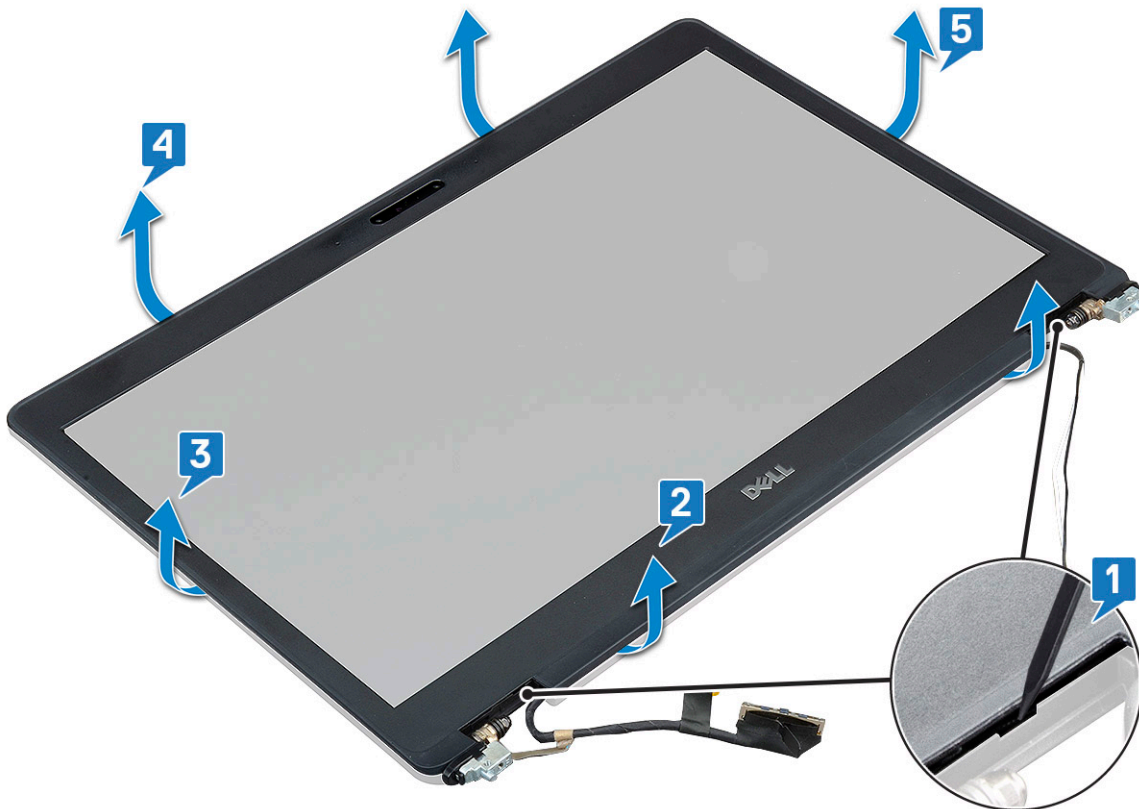
- a Pry the display bezel at the base of the display [1].

NOTE: When removing or reinstalling the display bezel from the display assembly, technicians should note that the display bezel is secured to the LCD panel with a strong adhesive and care must be taken to avoid damage to LCD.


- b Lift the display bezel to release it [2].

- c Pry the edges on the side of the display to release the display bezel [3, 4,5].

CAUTION: The adhesive used on the LCD bezel to seal it with the LCD itself, makes it hard to remove the bezel as the adhesive is very strong and tends to stay stuck to the LCD portion and can peel the layers up or crack the glass when trying to pry the two items apart.



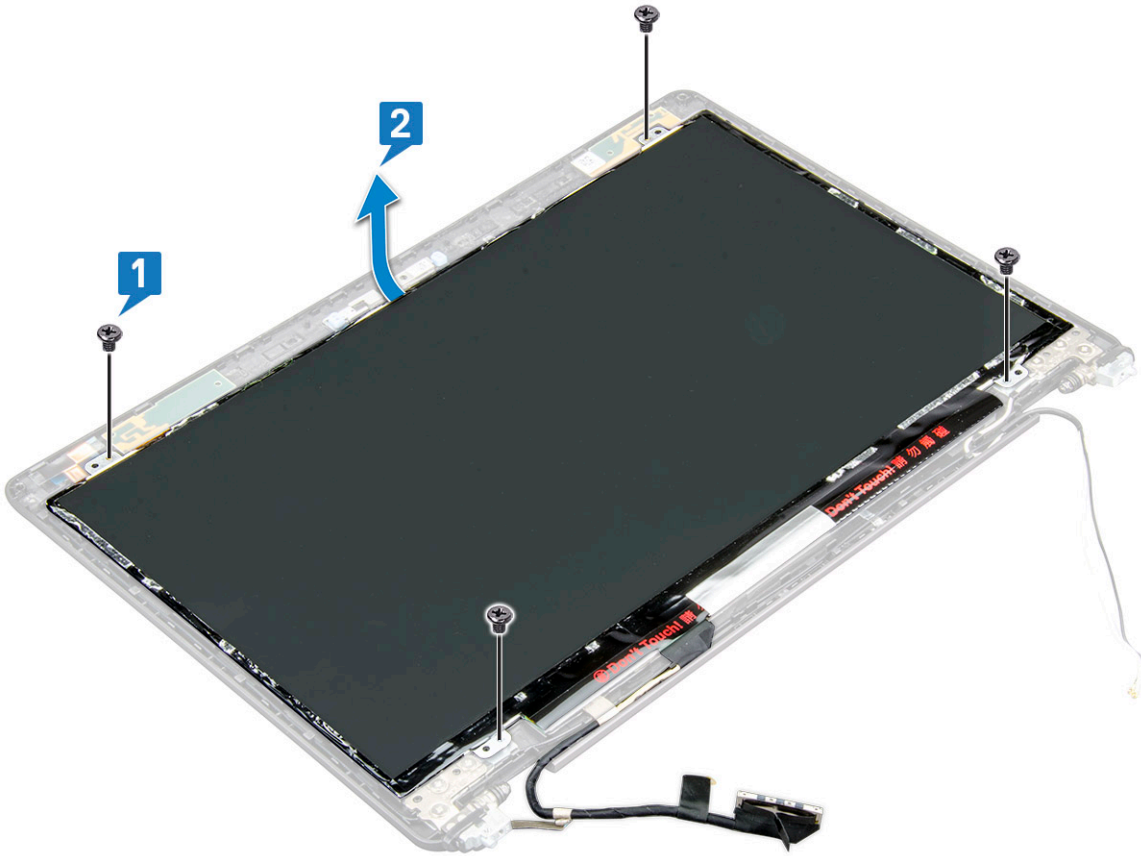
Installing display bezel

- 1 Place the display bezel on the display assembly.
-  **NOTE:** Remove the protective covering on the adhesive on the LCD bezel before placing on the display assembly.
- 2 Starting from a top corner, press on the display bezel and work around the entire bezel until it clicks on to the display assembly.
- 3 Install the:
 - a [display assembly](#)
 - b [display hinge cover](#)
 - c [WWAN card \(optional\)](#)
 - d [WLAN card](#)
 - e [battery](#)
 - f [base cover](#)
- 4 Follow the procedure in [After working inside your computer](#).

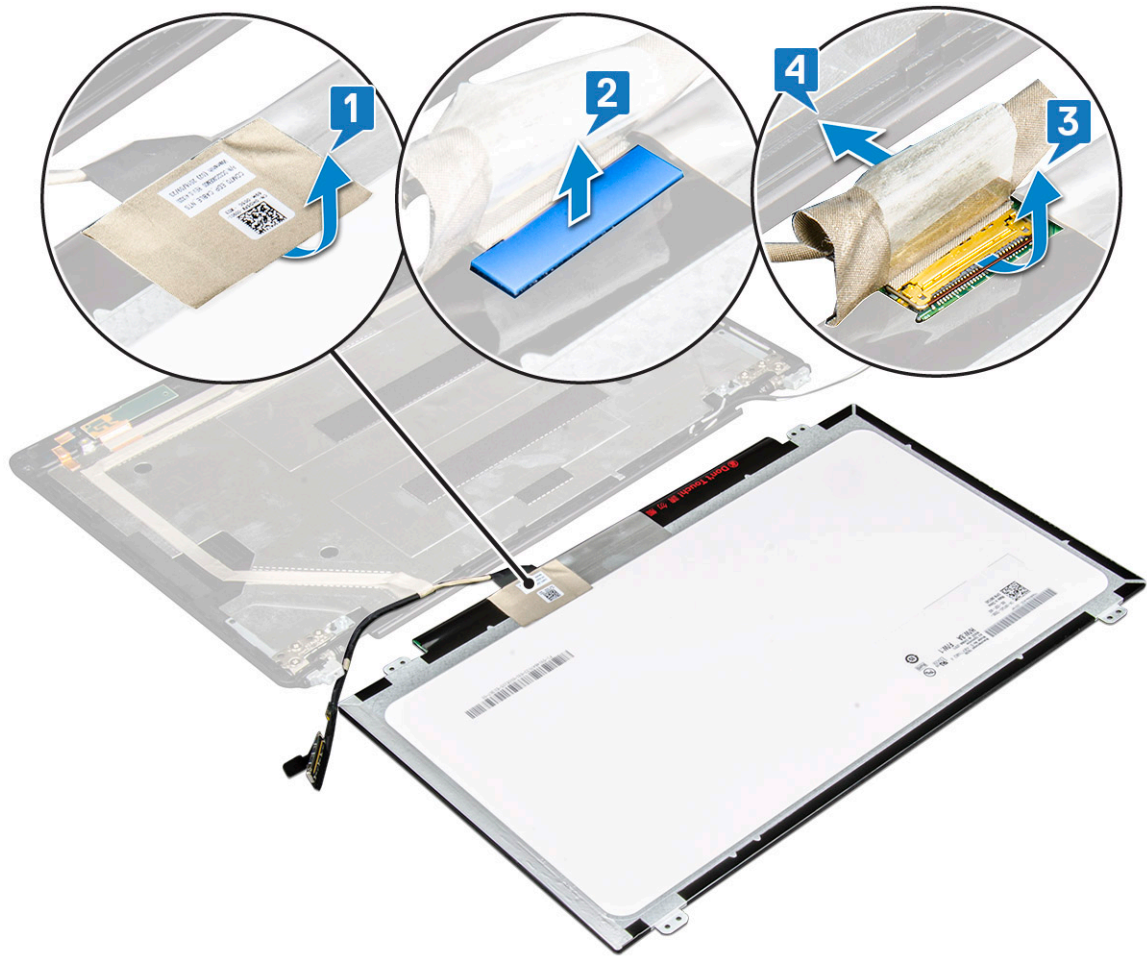
Display panel

Removing display panel

- 1 Follow the procedure in [Before working inside your computer](#).
- 2 Remove the:
 - a [base cover](#)
 - b [battery](#)
 - c [WLAN card](#)
 - d [WWAN card \(optional\)](#)
 - e [display hinge cover](#)
 - f [display assembly](#)
 - g [display bezel](#)
- 3 Remove the four M2x3 screws that secure the display panel to the display assembly [1] and lift to turn over the display panel to access the display cable [2].



- 4 To remove the display panel:
 - a Peel the conductive tape [1].
 - b Remove the adhesive strip that secures the display cable [2].
 - c Lift the latch and disconnect the display cable from the connector on the display panel [3] [4].



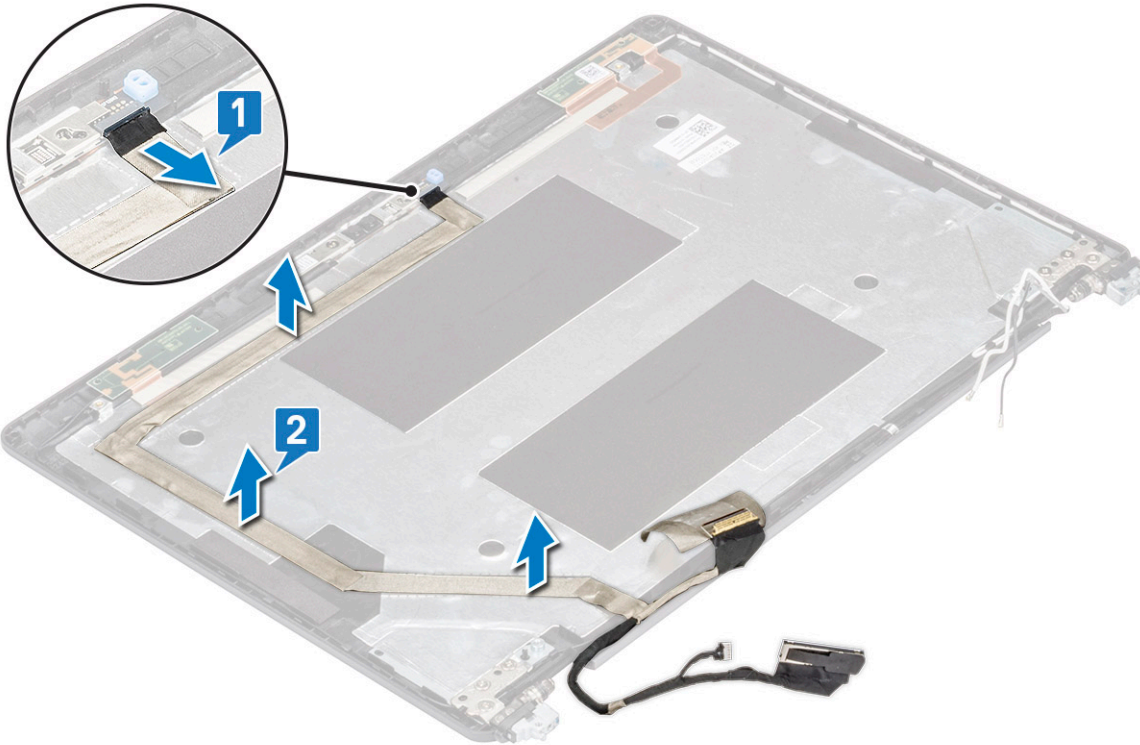
Installing display panel

- 1 Connect the display cable to the connector and affix the adhesive strip.
- 2 Affix the conductive tape to secure the display cable.
- 3 Replace the display panel to align with the screw holders on the display assembly.
- 4 Replace the four M2x3 screws to secure the display panel to the display back cover.
- 5 Install the:
 - a [display bezel](#)
 - b [display assembly](#)
 - c [display hinge cover](#)
 - d [WLAN card](#)
 - e [WWAN card \(optional\)](#)
 - f [battery](#)
 - g [base cover](#)
- 6 Follow the procedure in [After working inside your computer](#).

Display (eDP) cable

Removing display cable

- 1 Follow the procedure in [Before working inside your computer](#).
- 2 Remove the:
 - a base cover
 - b battery
 - c WLAN card
 - d WWAN card (optional)
 - e display hinge cover
 - f display assembly
 - g display bezel
 - h display panel
- 3 Disconnect the camera cable from the connector on the camera module [1].
- 4 Peel the display cable to release it from adhesive and lift the display cable from the display back cover [2].



Installing display cable

- 1 Affix the display cable to the display back cover.
- 2 Connect the camera cable to the connector on camera module.
- 3 Install the:
 - a display panel
 - b display bezel
 - c display assembly
 - d display hinge cover

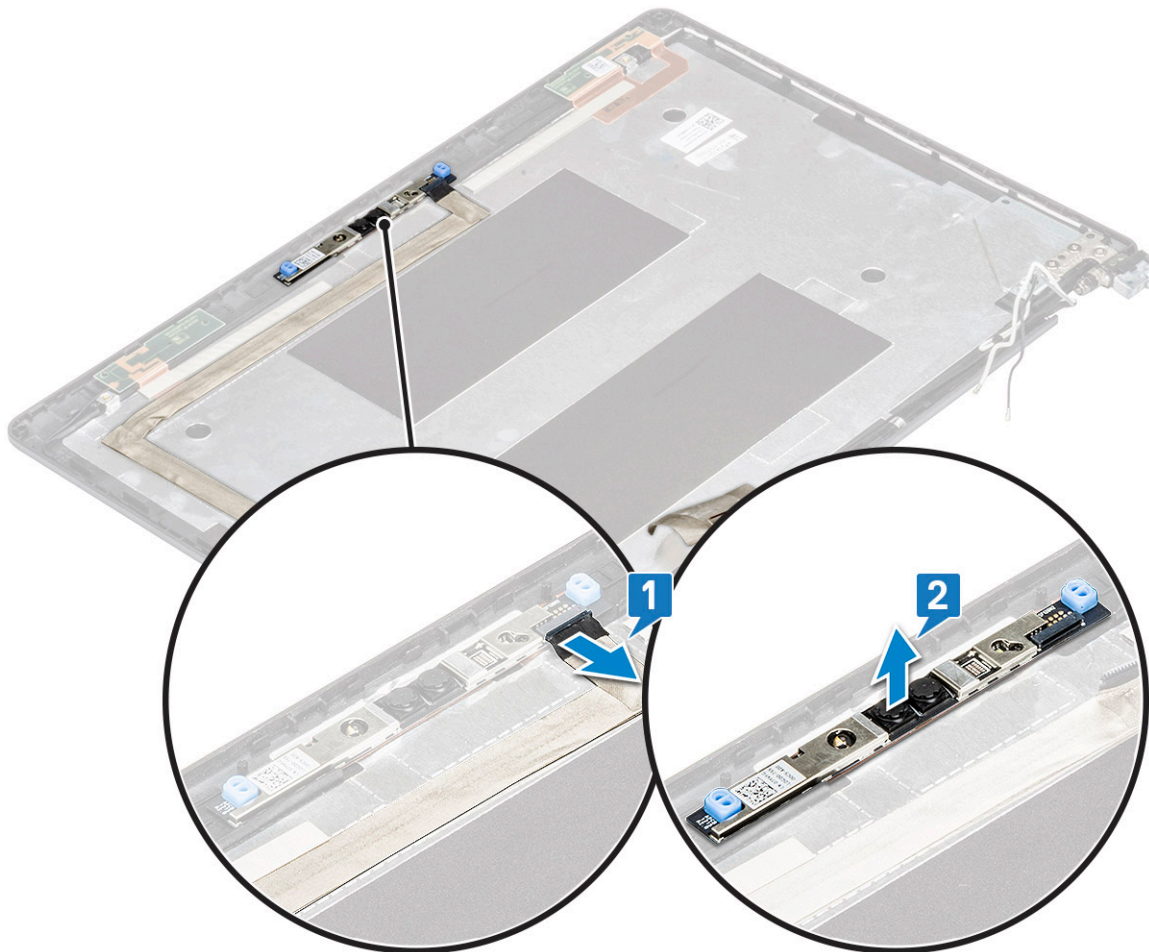
- e WLAN card
- f WWAN card (optional)
- g battery
- h base cover

4 Follow the procedure in [After working inside your computer](#).

Camera

Removing camera

- 1 Follow the procedure in [Before working inside your computer](#).
- 2 Remove the:
 - a base cover
 - b battery
 - c WLAN card
 - d WWAN card (optional)
 - e display hinge cover
 - f display assembly
 - g display bezel
 - h display panel
- 3 To remove the camera:
 - a Disconnect the camera cable from the connector on the camera module [1].
 - b Carefully pry and lift the camera module from the display back cover [2].



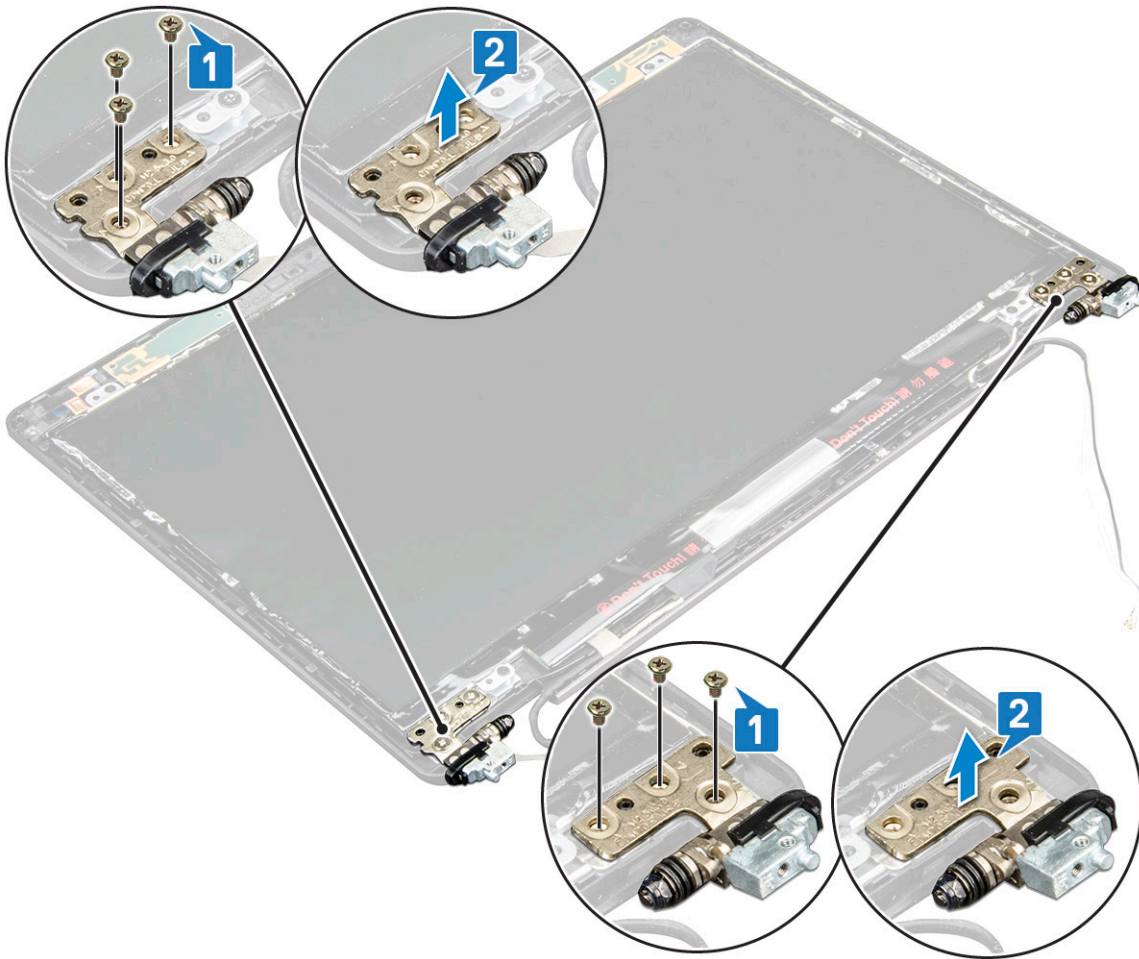
Installing camera

- 1 Insert the camera into the slot on the display back cover.
- 2 Connect the camera cable to the connector on the camera module.
- 3 Install the :
 - a display panel
 - b display bezel
 - c display assembly
 - d display hinge cover
 - e WLAN card
 - f WWAN card (optional)
 - g
 - h battery
 - i base cover
- 4 Follow the procedure in [After working inside your computer](#).

Display hinges

Removing display hinge

- 1 Follow the procedure in [Before working inside your computer](#).
- 2 Remove the:
 - a base cover
 - b battery
 - c WLAN card
 - d WWAN card (optional)
 - e display assembly
 - f display bezel
 - g display hinge cover
- 3 To remove the display hinge:
 - a Remove the 3 (M2.5x3) screws that secure the display hinge to the display assembly [1].
 - b Lift the display hinge from the display assembly [2].
 - c Repeat step a and step b to remove the other display hinge.



Installing display hinge

- 1 Place the display hinge on the display assembly.
- 2 Replace the 3 (M2.5x3) screws to secure the display hinge to the display assembly.
- 3 Repeat step 1 and step 2 to install the other display hinge.
- 4 Install the:
 - a [display hinge cover](#)
 - b [display bezel](#)
 - c [display assembly](#)
 - d [WLAN card](#)
 - e [WWAN card \(optional\)](#)
 - f [battery](#)
 - g [base cover](#)
- 5 Follow the procedure in [After working inside your computer](#).

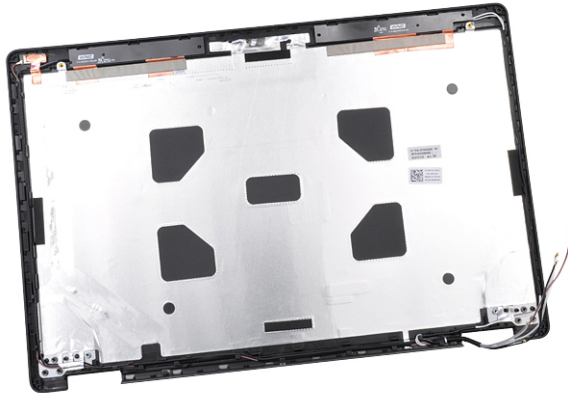
Display back cover assembly

Removing the display back cover assembly

- 1 Follow the procedure in [Before working inside your computer](#).
- 2 Remove the:

- a base cover
- b battery
- c WLAN card
- d WWAN card (optional)
- e display hinge cover
- f display assembly
- g display bezel
- h display panel
- i display hinge
- j display cable
- k camera

The display back cover assembly is the remaining component, after removing all the components.



Installing the display back cover assembly

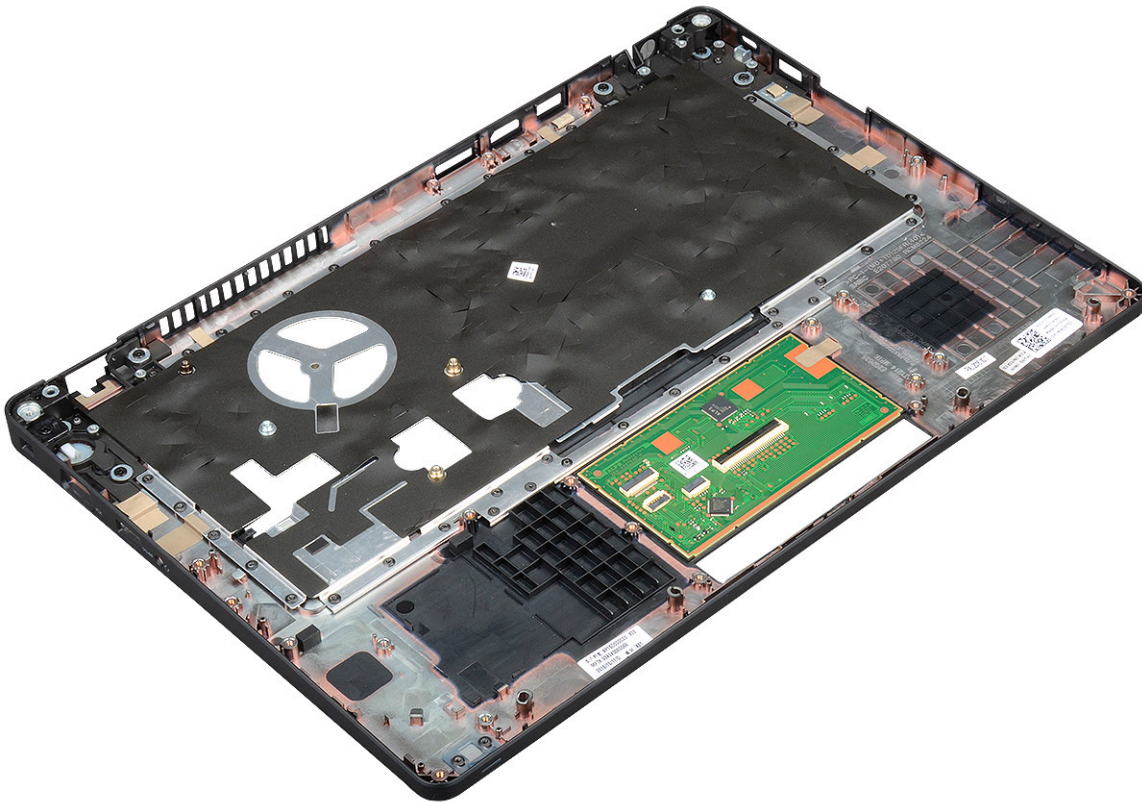
- 1 Place the display back cover assembly on a flat surface.
- 2 Install the:
 - a camera
 - b display cable
 - c display hinge
 - d display panel
 - e display bezel
 - f display assembly
 - g display hinge cover
 - h WLAN card
 - i WWAN card (optional)
 - j battery
 - k base cover
- 3 Follow the procedure in [After working inside your computer](#).

Palm rest

Removing palm rest

- 1 Follow the procedure in [Before working inside your computer](#).
- 2 Remove the:

- a SIM card
 - b base cover
 - c battery
 - d memory module
 - e hard drive
 - f SSD card
 - g SSD frame
 - h WLAN card
 - i WWAN card (optional)
 - j keyboard lattice
 - k keyboard
 - l heat sink
 - m chassis frame
 - n system fan
 - o system board
 - p display hinge cover
 - q display assembly
- 3 The palm rest is the remaining component after removing all the components.



Installing palm rest

- 1 Place the palm rest on a flat surface.
- 2 Install the:
 - a display assembly
 - b display hinge cover
 - c system board
 - d system fan
 - e chassis frame

- f heat sink assembly
- g keyboard
- h keyboard lattice
- i WWAN card (optional)
- j WLAN card
- k SSD frame
- l SSD card
- m hard drive
- n memory module
- o battery
- p base cover
- q SIM card

3 Follow the procedure in [After working inside your computer](#).

Technical specifications

NOTE: Offerings may vary by region. For more information regarding the configuration of your computer in:

- Windows 10, click or tap **Start**  > **Settings** > **System** > **About**.

Topics:

- Processor
- Memory
- Storage specifications
- Audio specifications
- Video specification
- Camera option
- Ports and Connectors
- Contacted smart card specifications
- Display specification
- Keyboard specifications
- Touch pad specifications
- Battery specifications
- AC Adapter specifications
- System dimensions
- Operating Conditions

Processor

Your system is built with Intel Dual and Quad Core processors.

Table 2. Processor specifications

Processors Support List	UMA Graphics
Intel® Core™ i3-7130U (Dual Core, 3M Cache, 2.7GHz,15W)	Intel® HD Graphics 620
Intel® Core™ i5-7300U (Dual Core, 3M Cache, 2.6GHz,15W, vPro)	Intel® HD Graphics 620
Intel® Core™ i5-8250U (Quad Core, 6M Cache, 1.6GHz,15W)	Intel® UHD Graphics 620
Intel® Core™ i5-8350U (Quad Core, 6M Cache, 1.7GHz,15W, vPro)	Intel® UHD Graphics 620
Intel® Core™ i7-8650U (Quad Core, 8M Cache, 1.9GHz,15W, vPro)	Intel® UHD Graphics 620

Memory

Your computer supports a maximum of 32 GB of memory.

Table 3. Memory specifications

Minimum Memory Configuration	4 GB
Maximum Memory Configuration	32 GB
Number of slots	2 (SoDIMM)
Maximum memory supported per slot	16 GB
Memory options	<ul style="list-style-type: none">• 4 GB — 1 x 4 GB• 8 GB — 1 x 8 GB• 8 GB — 2 x 4 GB• 16 GB — 2 x 8 GB• 16 GB — 1 x 16 GB• 32 GB — 2 x 16 GB
Type	DDR4
Speed	<ul style="list-style-type: none">• 2400 MHz for 8th Gen Processor• 2133 MHz for 7th Gen Processor

Storage specifications

NOTE: Depending on the configuration you order, you will see either a HDD, M.2 SATA, M.2 2280 SATA SSD or M.2 PCIe/NVMe SSD in your system.

Table 4. Storage specifications

Feature	Specification
2.5 inch HDD	Up to 1 TB, Hybrid, OPAL SED options
M.2 2280 SATA SSD	Up to 512 GB, OPAL SED options
M.2 2230 PCIe/NVMe SSD	Up to 512 GB
M.2 2280 PCIe x2 NVMe SSD	Up to 1 TB, OPAL SED options
Dell Fast Response Free Fall Sensor and HDD Isolation	Standard feature

Audio specifications

Feature	Specification
Types	High-definition audio
Controller	Realtek ALC3246
Internal interface	<ul style="list-style-type: none">• Universal Audio Jack• High Quality Speakers

Feature	Specification
	<ul style="list-style-type: none"> Noise reducing array microphones Volume control buttons, supports hot-key keyboard button
External interface	Stereo headset/mic combo
Speakers	Two
Volume controls	Hot keys

Video specification

Integrated

Feature	Specification
Type	Integrated on system board, hardware accelerated
UMA controller	<ul style="list-style-type: none"> Intel HD Graphics 620 Intel UHD Graphics 620
Data bus	Integrated video
External display support	<ul style="list-style-type: none"> HDMI 1.4 VGA connector Displayport over Type-C

Discrete

Feature	Specification
Type	Discrete
DSC controller	NVIDIA GeForce® MX130, GDDR5
Bus type	Internal PCIe 3.0
External display support	<ul style="list-style-type: none"> HDMI 2.0 VGA connector Displayport over Type-C

Camera option

This topics lists out the detailed camera specifications for your system.

Table 5. Camera specification

Camera type	HD fixed focus
IR Camera	Optional
Sensor type	CMOS sensor technology

Resolution: Motion video	Up to 1280 X 720 (1 MP)
Resolution: Still image	Up to 1280 X 720 (1 MP)
Imaging rate	Up to 30 frames per second

NOTE: The system is offered with no camera in one of the configurations.

Ports and Connectors

Table 6. Ports and Connectors

USB	Three USB 3.1 Gen 1 (one with PowerShare) One DisplayPort over USB Type-C.
Video	One VGA, HDMI 1.4 (UMA) / HDMI 2.0 (Discrete)
Network	One RJ-45
Modem	NA
Expansion	SD 4.0 Memory card reader
Smart Card Reader	Yes (optional)
Touch Fingerprint Reader	Yes (optional)
Contactless card reader	Yes (optional)
Audio	Universal Audio Jack High Quality Speakers Noise reducing array microphones Volume control buttons, supports hot-key keyboard button
Docking	DisplayPort over USB Type C™ Noble Wedge Lock slot

Contacted smart card specifications

Feature	Specification
Supported Smart Cards/Technologies	FIPS 201 Contacted Smart Card

Display specification

Table 7. Display specifications

Types	Specifications
FHD WVA (1920 x 1080) Anti-glare (16:9) WLED	Size • 14 inches

Types

Specifications

HD (1366 x 768) Anti-glare (16:9) WLED

Luminance/Brightness (typical)

- 220 nits

Native Resolution

- 1920x1080

Refresh Rate

- 60 Hz

Horizontal Viewing Angle

- +85/- 85 degrees

Vertical Viewing Angle

- +85/- 85 degrees

Size

- 14 inches

Luminance/Brightness (typical)

- 220 nits

Native Resolution

- 1366 x 768

Refresh Rate

- 60 Hz

Horizontal Viewing Angle

- +/- 40 degrees

Vertical Viewing Angle

- +10/-30 degrees

FHD WVA (1920 x 1080) Embedded Touch Display with Truelife (OTP Lite)

Size

- 14 inches

Luminance/Brightness (typical)

- 220 nits

Native Resolution

- 1920 x 1080

Refresh Rate

- 60 Hz

Horizontal Viewing Angle

- +85/- 85 degrees

Vertical Viewing Angle

- +85/- 85 degrees


Keyboard specifications

Feature	Specification
Number of keys	<ul style="list-style-type: none">· United States: 82 keys· United Kingdom: 83 keys· Japan: 86 keys· Brazil: 84 keys
Size	Full sized <ul style="list-style-type: none">· X= 19.05 mm key pitch· Y= 19.05 mm key pitch
Backlit keyboard	Yes (optional)

Keyboard Hot Key Definitions

Some keys on your keyboard have two icons on them. These keys can be used to type alternate characters or to perform secondary functions. To type the alternate character, press Shift and the desired key. To perform secondary functions, press **Fn** and the desired key.

Table 8. Keyboard hot key definitions

Fn Key Combination	Function
Fn+ESC	Fn Toggle
Fn+ F1	Speaker Mute
Fn + F2	Volume Down
Fn + F3	Volume Up
Fn + F4	Mic Mute
Fn + F5	Num Lock
Fn + F6	Scroll Lock
Fn + F8	Display Toggle (Win + P)
Fn + F9	Search
Fn + F10	Keyboard backlight on/off
	 NOTE: Applies to the optional dual point backlit keyboard.
Fn + F11	Brightness down
Fn + F12	Brightness up
Fn + Insert	Sleep
Fn + Print Screen	Wireless on/off

Fn + left arrow

Home

Fn + right arrow

End

Touch pad specifications

Feature	Specification
Dimensions	Width: 101.7mm
	Height: 55.2mm
Interface	Inter-Integrated Circuit
Multi-Touch	Support 4 fingers

Table 9. Supported gestures

Supported Gestures	Windows 10
Cursor moving	Supported
Clicking/ tapping	Supported
Click and drag	Supported
2-finger scroll	Supported
2-finger Pinch/ Zoom	Supported
2-finger tap (Right Clicking)	Supported
3-finger tap (Invoke Cortana)	Supported
3-finger swipe up (See all open windows)	Supported
3-finger swipe down (Show the desktop)	Supported
3-finger swipe right or left (Switch between open windows)	Supported
4-finger tap (Invoke Action Center)	Supported
4-finger swipe right or left (Switch virtual desktops)	Supported

Battery specifications

Feature	Specification
Type	<ul style="list-style-type: none"> • 3 cell, 42 Whr ExpressCharge Capable Battery • 3 cell, 51 Whr ExpressCharge Capable Battery • 4 cell, 68 Whr ExpressCharge Capable Battery • 4 cell, Long Cycle Life Battery

Feature	Specification								
3 cell, 42 Whr	<ul style="list-style-type: none"> · Length: 181mm (7.126 inch) · Width: 95.9mm (3.78 inch) · Height: 7.05mm (0.28 inch) · Weight: 210.00 g 								
3 cell, 51 Whr	<ul style="list-style-type: none"> · Length: 181mm (7.126 inch) · Width: 95.9mm (3.78 inch) · Height: 7.05mm (0.28 inch) · Weight: 250.00 g 								
4 cell, 68 Whr	<ul style="list-style-type: none"> · Length: 233mm (9.17 inch) · Width: 95.9mm (3.78 inch) · Height: 7.05mm (0.28 inch) · Weight: 340.00 g 								
4 cell, Long Cycle Life Battery	<ul style="list-style-type: none"> · Length: 233mm (9.17 inch) · Width: 95.9mm (3.78 inch) · Height: 7.05mm (0.28 inch) · Weight: 340.00 g 								
Voltage	<table border="0" style="width: 100%;"> <tr> <td style="padding-right: 20px;">42 Whr</td> <td>11.4 VDC</td> </tr> <tr> <td>51 Whr</td> <td>11.4 VDC</td> </tr> <tr> <td>68 Whr</td> <td>7.6 VDC</td> </tr> <tr> <td>4 cell Long Cycle Life Battery</td> <td>7.6 VDC</td> </tr> </table>	42 Whr	11.4 VDC	51 Whr	11.4 VDC	68 Whr	7.6 VDC	4 cell Long Cycle Life Battery	7.6 VDC
42 Whr	11.4 VDC								
51 Whr	11.4 VDC								
68 Whr	7.6 VDC								
4 cell Long Cycle Life Battery	7.6 VDC								
Life span	300 discharge/recharge cycles								
Temperature range									
Operating	<ul style="list-style-type: none"> · Charge: 0°C to 50°C (32°F to 122°F) · Discharge: 0°C to 70°C (32°F to 158°F) · Operating: 0°C to 35°C (32°F to 95°F) 								
Non-operating	- 20°C to 65°C (- 4°F to 149°F)								
Coin cell battery	3 V CR2032 lithium coin cell								

AC Adapter specifications

Feature	Specification
Type	<ul style="list-style-type: none"> · 65 W adapter, 7.4 mm barrel · 65 W BFR/PVC Halogen Free adapter, 7.4 mm barrel · 90 W adapter, 7.4 mm barrel

Feature	Specification
Input voltage	100 V AC to 240 V AC
Input current (maximum)	<ul style="list-style-type: none"> 65 W adapter - 1.7 A 65 W BFR/PVC Halogen Free adapter - 1.7 A 90 W adapter - 1.6 A
Adapter size	7.4 mm
Input frequency	50 Hz to 60 Hz
Output current	<ul style="list-style-type: none"> 65 W adapter - 3.34 A (continuous) 65 W BFR/PVC Halogen Free adapter - 3.34 A (continuous) 90 W adapter - 4.62 A (continuous)
Rated output voltage	19.5 V DC
Temperature range (Operating)	0°C to 40°C (32°F to 104°F)
Temperature range (Non-Operating)	-40°C to 70°C (-40°F to 158°F)

System dimensions

Table 10. System dimensions

		Touch
Weight (pounds/kilogram)		Start from 3.52 lb / 1.60 kg
Dimensions inches		
	Height	Touch system: <ul style="list-style-type: none"> Front – 20.3 mm (0.8 inch) Back – 20.5 mm (0.8 inch) Non-touch system: <ul style="list-style-type: none"> Front – 20.3 mm (0.8 inch) Back – 20.5 mm (0.8 inch)
	Width	333.4 mm (13.1 inch)
	Depth	228.9 mm (9.0 inch)

Operating Conditions

This topics lists the operating conditions of your system.

Table 11. Operating conditions

Temperature Range	<ul style="list-style-type: none"> Operating: 0 °C to 35 °C (32 °F to 95 °F)
-------------------	---

Relative humidity	<ul style="list-style-type: none"> Storage: -40 °C to 65 °C (-40 °F to 149 °F) Operating : 10 % to 90 % (non-condensing) Storage: 0% to 95% (non-condensing)
Altitude (maximum)	<ul style="list-style-type: none"> Operating : 3048 m (10,000 ft) Storage: 10668 m (35,000 ft)
Shock	<ul style="list-style-type: none"> Operating: 160 G with pulse duration of 2 ms (equivalent to 80 in/sec) Storage: 160 G with pulse duration of 2 ms (equivalent to 80 in/sec)
Vibration	<ul style="list-style-type: none"> Operating: 0.66 Grms Storage: 1.33 Grms

Technology and components

This chapter details the technology and components available in the system.

Topics:

- [Power adapter](#)
- [Kaby Lake — 7th Generation Intel Core processors](#)
- [Kaby Lake Refresh — 8th Generation Intel Core processors](#)
- [DDR4](#)
- [HDMI 1.4](#)
- [HDMI 1.4](#)
- [USB features](#)
- [USB Type-C](#)

Power adapter

This laptop is shipped with 7.4 mm barrel plug on 65 W or 65 W BFR/PVC Halogen Free or 90 W power adapter.

⚠ WARNING: When you disconnect the power adapter cable from the laptop, grasp the connector, not the cable itself, and then pull firmly but gently to avoid damaging the cable.

⚠ WARNING: The power adapter works with electrical outlets worldwide. However, power connectors and power strips vary among countries. Using an incompatible cable or improperly connecting the cable to the power strip or electrical outlet may cause fire or equipment damage.

Kaby Lake — 7th Generation Intel Core processors

The 7th Gen Intel Core processor (Kaby Lake) family is the successor of 6th generation processors (Sky Lake). It's main features include:

- Intel 14nm Manufacturing Process Technology
- Intel Turbo Boost Technology
- Intel Hyper Threading Technology
- Intel Built-in Visuals
 - Intel HD graphics - exceptional videos, editing smallest details in the videos
 - Intel Quick Sync Video - excellent video conferencing capability, quick video editing and authoring
 - Intel Clear Video HD - visual quality and color fidelity enhancements for HD playback and immersing web browsing
- Integrated memory controller
- Intel Smart Cache
- Optional Intel vPro technology (on i5/i7) with Active Management Technology 11.6
- Intel Rapid Storage Technology

Kaby lake Specifications

Table 12. Kaby lake specifications

Processor number	Clock Speed	Cache	No. of cores/No. of threads	Power	Memory type	Graphics
Intel Core i3-7100U (3M Cache, up to 2.4 GHz), Dual Core	2.4 GHz	3 MB	2/4	15 W	DDR4-2133	Intel HD graphics 620
Intel Core i5-7200U (3M Cache, up to 3.1 GHz), Dual Core	2.5 GHz	3 MB	2/4	15 W	DDR4-2133	Intel HD graphics 620
Intel Core i5-7300U (3M Cache, up to 3.5 GHz),vPro, Dual Core	2.6 GHz	3 MB	2/4	15 W	DDR4-2133	Intel HD graphics 620
Intel Core i7-7600U (4M Cache, up to 3.9 GHz), vPro, Dual Core	2.8 GHz	4 MB	2/4	15 W	DDR4-2133	Intel HD graphics 620
Intel Core i5-7300HQ (6M Cache, up to 3.5GHz), Quad Core, 35W CTDP	2.5 GHz	6 MB	4/4	35 W	DDR4-2133; DDR4-2400	Intel HD Graphics 630
Intel Core i5-7440HQ (6M Cache, up to 3.8GHz), Quad Core, 35W CTDP	2.8 GHz	6 MB	4/4	35 W	DDR4-2133; DDR4-2400	Intel HD Graphics 630
Intel Core i7-7820HQ (8M Cache up to 3.9GHz), Quad Core, 35W CTDP	2.9 GHz	8 MB	4/8	35 W	DDR4-2133; DDR4-2400	Intel HD Graphics 630

Kaby Lake Refresh — 8th Generation Intel Core processors

The 8th Gen Intel Core processor (Kaby Lake Refresh) family is the successor of 7th generation processors. Its main features include:

- Intel 14nm+ Manufacturing Process Technology
- Intel Turbo Boost Technology
- Intel Hyper Threading Technology
- Intel Built-in Visuals
 - Intel HD graphics - exceptional videos, editing smallest details in the videos
 - Intel Quick Sync Video - excellent video conferencing capability, quick video editing and authoring
 - Intel Clear Video HD - visual quality and color fidelity enhancements for HD playback and immersing web browsing
- Integrated memory controller
- Intel Smart Cache
- Optional Intel vPro technology (on i5/i7) with Active Management Technology 11.6
- Intel Rapid Storage Technology

Kaby Lake Refresh Specifications

Table 13. Kaby Lake Refresh specifications

Processor number	Clock Speed	Cache	No. of cores/No. of threads	Power	Memory type	Graphics
Intel Core i7-8650U	4.2 GHz	8 MB	4/8	15 W	DDR4-2400 or LPDDR3-2133	Intel UHD graphics 620
Intel Core i7-8550U	4.0 GHz	8 MB	4/8	15 W	DDR4-2400 or LPDDR3-2133	Intel UHD graphics 620
Intel Core i5-8350U	3.6 GHz	6 MB	4/8	15 W	DDR4-2400 or LPDDR3-2133	Intel UHD graphics 620
Intel Core i5-8250U	3.4 GHz	6 MB	4/8	15 W	DDR4-2400 or LPDDR3-2133	Intel UHD graphics 620

DDR4

DDR4 (double data rate fourth generation) memory is a higher-speed successor to the DDR2 and DDR3 technologies and allows up to 512 GB in capacity, compared to the DDR3's maximum of 128 GB per DIMM. DDR4 synchronous dynamic random-access memory is keyed differently from both SDRAM and DDR to prevent the user from installing the wrong type of memory into the system.

DDR4 needs 20 percent less or just 1.2 volts, compared to DDR3 which requires 1.5 volts of electrical power to operate. DDR4 also supports a new, deep power-down mode that allows the host device to go into standby without needing to refresh its memory. Deep power-down mode is expected to reduce standby power consumption by 40 to 50 percent.

DDR4 Details

There are subtle differences between DDR3 and DDR4 memory modules, as listed below.

Key notch difference

The key notch on a DDR4 module is in a different location from the key notch on a DDR3 module. Both notches are on the insertion edge but the notch location on the DDR4 is slightly different, to prevent the module from being installed into an incompatible board or platform.

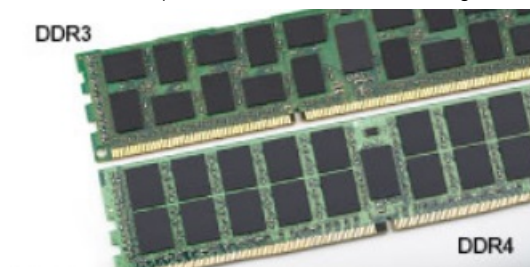


Figure 1. Notch difference

Increased thickness

DDR4 modules are slightly thicker than DDR3, to accommodate more signal layers.

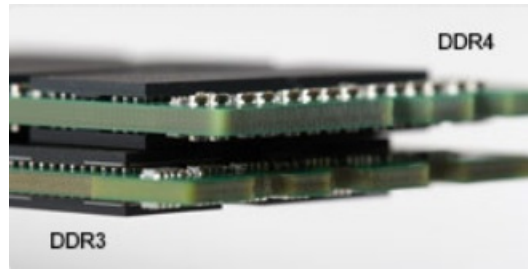


Figure 2. Thickness difference

Curved edge

DDR4 modules feature a curved edge to help with insertion and alleviate stress on the PCB during memory installation.



Figure 3. Curved edge

Memory Errors

Memory errors on the system display the new ON-FLASH-FLASH or ON-FLASH-ON failure code. If all memory fails, the LCD does not turn on. Troubleshoot for possible memory failure by trying known good memory modules in the memory connectors on the bottom of the system or under the keyboard, as in some portable systems.

HDMI 1.4

This topic explains the HDMI 1.4 and its features along with the advantages.

HDMI (High-Definition Multimedia Interface) is an industry-supported, uncompressed, all-digital audio/video interface. HDMI provides an interface between any compatible digital audio/video source, such as a DVD player, or A/V receiver and a compatible digital audio and/or video monitor, such as a digital TV (DTV). The intended applications for HDMI TVs, and DVD players. The primary advantage is cable reduction and content protection provisions. HDMI supports standard, enhanced, or high-definition video, plus multichannel digital audio on a single cable.

NOTE: The HDMI 1.4 will provide 5.1 channel audio support.

HDMI 1.4 Features

- **HDMI Ethernet Channel** - Adds high-speed networking to an HDMI link, allowing users to take full advantage of their IP-enabled devices without a separate Ethernet cable
- **Audio Return Channel** - Allows an HDMI-connected TV with a built-in tuner to send audio data "upstream" to a surround audio system, eliminating the need for a separate audio cable
- **3D** - Defines input/output protocols for major 3D video formats, paving the way for true 3D gaming and 3D home theater applications
- **Content Type** - Real-time signaling of content types between display and source devices, enabling a TV to optimize picture settings based on content type
- **Additional Color Spaces** - Adds support for additional color models used in digital photography and computer graphics

- **4K Support** - Enables video resolutions far beyond 1080p, supporting next-generation displays that will rival the Digital Cinema systems used in many commercial movie theaters
- **HDMI Micro Connector** - A new, smaller connector for phones and other portable devices, supporting video resolutions up to 1080p
- **Automotive Connection System** - New cables and connectors for automotive video systems, designed to meet the unique demands of the motoring environment while delivering true HD quality

Advantages of HDMI

- Quality HDMI transfers uncompressed digital audio and video for the highest, crispest image quality.
- Low -cost HDMI provides the quality and functionality of a digital interface while also supporting uncompressed video formats in a simple, cost-effective manner
- Audio HDMI supports multiple audio formats from standard stereo to multichannel surround sound
- HDMI combines video and multichannel audio into a single cable, eliminating the cost, complexity, and confusion of multiple cables currently used in A/V systems
- HDMI supports communication between the video source (such as a DVD player) and the DTV, enabling new functionality

HDMI 1.4

This topic explains the HDMI 1.4 and its features along with the advantages.

HDMI (High-Definition Multimedia Interface) is an industry-supported, uncompressed, all-digital audio/video interface. HDMI provides an interface between any compatible digital audio/video source, such as a DVD player, or A/V receiver and a compatible digital audio and/or video monitor, such as a digital TV (DTV). The intended applications for HDMI TVs, and DVD players. The primary advantage is cable reduction and content protection provisions. HDMI supports standard, enhanced, or high-definition video, plus multichannel digital audio on a single cable.

 **NOTE: The HDMI 1.4 will provide 5.1 channel audio support.**

HDMI 1.4 Features

- **HDMI Ethernet Channel** - Adds high-speed networking to an HDMI link, allowing users to take full advantage of their IP-enabled devices without a separate Ethernet cable
- **Audio Return Channel** - Allows an HDMI-connected TV with a built-in tuner to send audio data "upstream" to a surround audio system, eliminating the need for a separate audio cable
- **3D** - Defines input/output protocols for major 3D video formats, paving the way for true 3D gaming and 3D home theater applications
- **Content Type** - Real-time signaling of content types between display and source devices, enabling a TV to optimize picture settings based on content type
- **Additional Color Spaces** - Adds support for additional color models used in digital photography and computer graphics
- **4K Support** - Enables video resolutions far beyond 1080p, supporting next-generation displays that will rival the Digital Cinema systems used in many commercial movie theaters
- **HDMI Micro Connector** - A new, smaller connector for phones and other portable devices, supporting video resolutions up to 1080p
- **Automotive Connection System** - New cables and connectors for automotive video systems, designed to meet the unique demands of the motoring environment while delivering true HD quality

Advantages of HDMI

- Quality HDMI transfers uncompressed digital audio and video for the highest, crispest image quality.
- Low -cost HDMI provides the quality and functionality of a digital interface while also supporting uncompressed video formats in a simple, cost-effective manner
- Audio HDMI supports multiple audio formats from standard stereo to multichannel surround sound
- HDMI combines video and multichannel audio into a single cable, eliminating the cost, complexity, and confusion of multiple cables currently used in A/V systems

- HDMI supports communication between the video source (such as a DVD player) and the DTV, enabling new functionality

USB features

Universal Serial Bus, or USB, was introduced in 1996. It dramatically simplified the connection between host computers and peripheral devices like mice, keyboards, external drives, and printers.

Let's take a quick look on the USB evolution referencing to the table below.

Table 14. USB evolution

Type	Data Transfer Rate	Category	Introduction Year
USB 2.0	480 Mbps	High Speed	2000
USB 3.0/USB 3.1 Gen 1	5 Gbps	Super Speed	2010
USB 3.1 Gen 2	10 Gbps	Super Speed	2013

USB 3.0/USB 3.1 Gen 1 (SuperSpeed USB)

For years, the USB 2.0 has been firmly entrenched as the de facto interface standard in the PC world with about 6 billion devices sold, and yet the need for more speed grows by ever faster computing hardware and ever greater bandwidth demands. The USB 3.0/USB 3.1 Gen 1 finally has the answer to the consumers' demands with a theoretically 10 times faster than its predecessor. In a nutshell, USB 3.1 Gen 1 features are as follows:

- Higher transfer rates (up to 5 Gbps)
- Increased maximum bus power and increased device current draw to better accommodate power-hungry devices
- New power management features
- Full-duplex data transfers and support for new transfer types
- Backward USB 2.0 compatibility
- New connectors and cable

The topics below cover some of the most commonly asked questions regarding USB 3.0/USB 3.1 Gen 1.

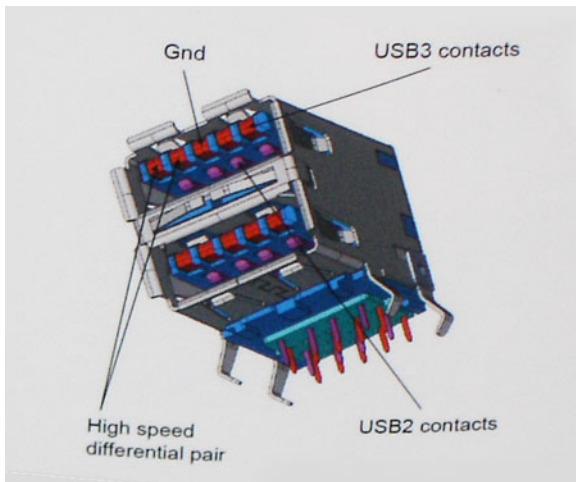


Speed

Currently, there are 3 speed modes defined by the latest USB 3.0/USB 3.1 Gen 1 specification. They are Super-Speed, Hi-Speed and Full-Speed. The new SuperSpeed mode has a transfer rate of 4.8Gbps. While the specification retains Hi-Speed, and Full-Speed USB mode, commonly known as USB 2.0 and 1.1 respectively, the slower modes still operate at 480Mbps and 12Mbps respectively and are kept to maintain backward compatibility.

USB 3.0/USB 3.1 Gen 1 achieves the much higher performance by the technical changes below:

- An additional physical bus that is added in parallel with the existing USB 2.0 bus (refer to the picture below).
- USB 2.0 previously had four wires (power, ground, and a pair for differential data); USB 3.0/USB 3.1 Gen 1 adds four more for two pairs of differential signals (receive and transmit) for a combined total of eight connections in the connectors and cabling.
- USB 3.0/USB 3.1 Gen 1 utilizes the bidirectional data interface, rather than USB 2.0's half-duplex arrangement. This gives a 10-fold increase in theoretical bandwidth.



With today's ever increasing demands placed on data transfers with high-definition video content, terabyte storage devices, high megapixel count digital cameras etc., USB 2.0 may not be fast enough. Furthermore, no USB 2.0 connection could ever come close to the 480Mbps theoretical maximum throughput, making data transfer at around 320Mbps (40MB/s) — the actual real-world maximum. Similarly, USB 3.0/USB 3.1 Gen 1 connections will never achieve 4.8Gbps. We will likely see a real-world maximum rate of 400MB/s with overheads. At this speed, USB 3.0/USB 3.1 Gen 1 is a 10x improvement over USB 2.0.

Applications

USB 3.0/USB 3.1 Gen 1 opens up the laneways and provides more headroom for devices to deliver a better overall experience. Where USB video was barely tolerable previously (both from a maximum resolution, latency, and video compression perspective), it's easy to imagine that with 5-10 times the bandwidth available, USB video solutions should work that much better. Single-link DVI requires almost 2Gbps throughput. Where 480Mbps was limiting, 5Gbps is more than promising. With its promised 4.8Gbps speed, the standard will find its way into some products that previously weren't USB territory, like external RAID storage systems.

Listed below are some of the available SuperSpeed USB 3.0/USB 3.1 Gen 1 products:

- External Desktop USB 3.0/USB 3.1 Gen 1 Hard Drives
- Portable USB 3.0/USB 3.1 Gen 1 Hard Drives
- USB 3.0/USB 3.1 Gen 1 Drive Docks & Adapters
- USB 3.0/USB 3.1 Gen 1 Flash Drives & Readers
- USB 3.0/USB 3.1 Gen 1 Solid-state Drives
- USB 3.0/USB 3.1 Gen 1 RAID's
- Optical Media Drives
- Multimedia Devices
- Networking
- USB 3.0/USB 3.1 Gen 1 Adapter Cards & Hubs

Compatibility

The good news is that USB 3.0/USB 3.1 Gen 1 has been carefully planned from the start to peacefully co-exist with USB 2.0. First of all, while USB 3.0/USB 3.1 Gen 1 specifies new physical connections and thus new cables to take advantage of the higher speed capability of the new protocol, the connector itself remains the same rectangular shape with the four USB 2.0 contacts in the exact same location as before. Five new connections to carry receive and transmitted data independently are present on USB 3.0/USB 3.1 Gen 1 cables and only come into contact when connected to a proper SuperSpeed USB connection.

Windows 8/10 will be bringing native support for USB 3.1 Gen 1 controllers. This is in contrast to previous versions of Windows, which continue to require separate drivers for USB 3.0/USB 3.1 Gen 1 controllers.

Microsoft announced that Windows 7 would have USB 3.1 Gen 1 support, perhaps not on its immediate release, but in a subsequent Service Pack or update. It is not out of the question to think that following a successful release of USB 3.0/USB 3.1 Gen 1 support in Windows 7, SuperSpeed support would trickle down to Vista. Microsoft has confirmed this by stating that most of their partners share the opinion that Vista should also support USB 3.0/USB 3.1 Gen 1.

Advantages of Displayport over USB Type-C

- Full DisplayPort audio/video (A/V) performance (up to 4K at 60Hz)
- SuperSpeed USB (USB 3.1) data
- Reversible plug orientation and cable direction
- Backwards compatibility to VGA, DVI with adaptors
- Supports HDMI 2.0a and is backwards compatible with previous versions

USB Type-C

USB Type-C is a new, tiny physical connector. The connector itself can support various exciting new USB standard like USB 3.1 and USB power delivery (USB PD).

Alternate Mode

USB Type-C is a new connector standard that's very small. It's about a third the size of an old USB Type-A plug. This is a single connector standard that every device should be able to use. USB Type-C ports can support a variety of different protocols using "alternate modes," which allows you to have adapters that can output HDMI, VGA, DisplayPort, or other types of connections from that single USB port

USB Power Delivery

The USB PD specification is also closely intertwined with USB Type-C. Currently, smartphones, tablets, and other mobile devices often use a USB connection to charge. A USB 2.0 connection provides up to 2.5 watts of power — that'll charge your phone, but that's about it. A laptop might require up to 60 watts, for example. The USB Power Delivery specification ups this power delivery to 100 watts. It's bi-directional, so a device can either send or receive power. And this power can be transferred at the same time the device is transmitting data across the connection.

This could spell the end of all those proprietary laptop charging cables, with everything charging via a standard USB connection. You could charge your laptop from one of those portable battery packs you charge your smartphones and other portable devices from today. You could plug your laptop into an external display connected to a power cable, and that external display would charge your laptop as you used it as an external display — all via the one little USB Type-C connection. To use this, the device and the cable have to support USB Power Delivery. Just having a USB Type-C connection doesn't necessarily mean they do.

System setup options

NOTE: Depending on the computer and its installed devices, the items listed in this section may or may not appear.

Topics:

- [Boot Sequence](#)
- [Navigation keys](#)
- [System Setup overview](#)
- [Accessing System Setup](#)
- [General screen options](#)
- [System Configuration screen options](#)
- [Video screen options](#)
- [Security screen options](#)
- [Secure Boot screen options](#)
- [Intel Software Guard Extensions](#)
- [Performance screen options](#)
- [Power Management screen options](#)
- [POST Behavior screen options](#)
- [Manageability](#)
- [Virtualization support screen options](#)
- [Wireless screen options](#)
- [Maintenance screen options](#)

Boot Sequence

Boot Sequence allows you to bypass the System Setup–defined boot device order and boot directly to a specific device (for example: optical drive or hard drive). During the Power-on Self Test (POST), when the Dell logo appears, you can:

- Access System Setup by pressing F2 key
- Bring up the one-time boot menu by pressing F12 key

The one-time boot menu displays the devices that you can boot from including the diagnostic option. The boot menu options are:

- Removable Drive (if available)
- STXXXX Drive

NOTE: XXX denotes the SATA drive number.

- Optical Drive (if available)
- SATA Hard Drive (if available)
- Diagnostics

NOTE: Choosing Diagnostics, will display the ePSA diagnostics screen.

The boot sequence screen also displays the option to access the System Setup screen.

Navigation keys

NOTE: For most of the System Setup options, changes that you make are recorded but do not take effect until you restart the system.

Keys	Navigation
Up arrow	Moves to the previous field.
Down arrow	Moves to the next field.
Enter	Selects a value in the selected field (if applicable) or follow the link in the field.
Spacebar	Expands or collapses a drop-down list, if applicable.
Tab	Moves to the next focus area.

NOTE: For the standard graphics browser only.

Esc Moves to the previous page until you view the main screen. Pressing Esc in the main screen displays a message that prompts you to save any unsaved changes and restarts the system.

System Setup overview

System Setup allows you to:

- Change the system configuration information after you add, change, or remove any hardware in your computer.
- Set or change a user-selectable option such as the user password.
- Read the current amount of memory or set the type of hard drive installed.

Before you use System Setup, it is recommended that you write down the System Setup screen information for future reference.

CAUTION: Unless you are an expert computer user, do not change the settings for this program. Certain changes can cause your computer to work incorrectly.

Accessing System Setup

- 1 Turn on (or restart) your computer.
- 2 After the white Dell logo appears, press F2 immediately.
The System Setup page is displayed.

NOTE: If you wait too long and the operating system logo appears, wait until you see the desktop. Then, shut down or restart your computer and try again.

NOTE: After the Dell logo appears, you can also press F12 and then select BIOS setup.

General screen options


This section lists the primary hardware features of your computer.

Option	Description
System Information	This section lists the primary hardware features of your computer. <ul style="list-style-type: none">• System Information: Displays BIOS Version, Service Tag, Asset Tag, Ownership Tag, Ownership Date, Manufacture Date, and the Express Service Code.• Memory Information: Displays Memory Installed, Memory Available, Memory Speed, Memory Channels Mode, Memory Technology, DIMM A Size, DIMM B Size,

Option	Description
	<ul style="list-style-type: none"> · Processor Information: Displays Processor Type, Core Count, Processor ID, Current Clock Speed, Minimum Clock Speed, Maximum Clock Speed, Processor L2 Cache, Processor L3 Cache, HT Capable, and 64-Bit Technology. · Device Information: Displays Primary Hard Drive, M.2 SATA2, M.2 SATA, M.2 PCIe SSD-0, LOM MAC Address, Video Controller, Video BIOS Version, Video Memory, Panel Type, Native Resolution, Audio Controller, Wi-Fi Device, WiGig Device, Cellular Device, Bluetooth Device.
Battery Information	Displays the battery status and the type of AC adapter connected to the computer.
Boot Sequence	Allows you to change the order in which the computer attempts to find an operating system. <ul style="list-style-type: none"> · Diskette Drive · Internal HDD · USB Storage Device · CD/DVD/CD-RW Drive · Onboard NIC
Advanced Boot Options	This option allows you the legacy option ROMs to load. By default, the Enable Legacy Option ROMs is disabled.
UEFI Boot Path Security	This options controls whether or not the system will prompt the user to enter the Admin password when booting a UEFI boot path from the F12 Boot Menu. <ul style="list-style-type: none"> · Always, Except Internal HDD (enabled by default) · Always · Never
Date/Time	Allows you to change the date and time.

System Configuration screen options

Option	Description
Integrated NIC	Allows you to configure the integrated network controller. The options are: <ul style="list-style-type: none"> · Disabled · Enabled · Enabled w/PXE: This option is enabled by default.
SATA Operation	Allows you to configure the internal SATA hard-drive controller. The options are: <ul style="list-style-type: none"> · Disabled · AHCI · RAID On: This option is enabled by default.
Drives	Allows you to configure the SATA drives on board. All drives are enabled by default. The options are: <ul style="list-style-type: none"> · SATA-0 · SATA-2 · SATA-1 · M.2 PCI-e SSD-0
SMART Reporting	This field controls whether hard drive errors for integrated drives are reported during system startup. This technology is part of the SMART (Self Monitoring Analysis and Reporting Technology) specification. This option is disabled by default.

Option	Description
	<ul style="list-style-type: none"> · Enable SMART Reporting
USB Configuration	<p>This is an optional feature.</p> <p>This field configures the integrated USB controller. If Boot Support is enabled, the system is allowed to boot any type of USB Mass Storage Devices (HDD, memory key, floppy).</p> <p>If USB port is enabled, device attached to this port is enabled and available for OS.</p> <p>If USB port is disabled, the OS cannot see any device attached to this port.</p> <p>The options are:</p> <ul style="list-style-type: none"> · Enable USB Boot Support: This option is enabled by default. · Enable External USB Port: This option is enabled by default. <p> NOTE: USB keyboard and mouse always work in the BIOS setup irrespective of these settings.</p>
Dell Type-C Dock Configuration	The option Always Allow Dell Docks is enabled by default.
USB PowerShare	This field configures the USB PowerShare feature behavior. This option allows you to charge external devices using the stored system battery power through the USB PowerShare port. The option "Enable USB Power Share" is not enabled by default.
Audio	<ul style="list-style-type: none"> · Enable Microphone (default) · Enable Internal Speaker (default)
Unobtrusive Mode	This option, when enabled, pressing Fn+F7 turns off all light and sound emissions in the system. To resume normal operation, press Fn+F7 again. This option is disabled by default.
Touchscreen	<p>This field controls whether the touchscreen is enabled or disabled.</p> <ul style="list-style-type: none"> · Touchscreen (enabled by default)
Miscellaneous Devices	<p>Allows you to enable or disable the following devices:</p> <ul style="list-style-type: none"> · Enable Camera: This option is enabled by default. · Enable Hard Drive Free Fall Protection: This option is enabled by default. · Enable Secure Digital (SD) Card: This option is enabled by default. · Secure Digital (SD) Card Boot · Secure Digital (SD) Card Read — only Mode

Video screen options

Option	Description
LCD Brightness	Allows you to set the display brightness depending up on the power source (On Battery and On AC).

 **NOTE:** The video setting will be visible only when a video card is installed into the system.

Security screen options

Option	Description
Admin Password	<p>Allows you to set, change, or delete the administrator (admin) password.</p> <p>NOTE: You must set the admin password before you set the system or hard drive password. Deleting the admin password automatically deletes the system password and the hard drive password.</p> <p>NOTE: Successful password changes take effect immediately.</p> <p>Default setting: Not set</p>
System Password	<p>Allows you to set, change or delete the system password.</p> <p>NOTE: Successful password changes take effect immediately.</p> <p>Default setting: Not set</p>
Internal HDD-0 Password	<p>Allows you to set, change, or delete the Internal HDD-0 password.</p> <p>NOTE: Successful password changes take effect immediately.</p> <p>Default setting: Not set</p> <p>NOTE: It may display depending on the storage device installed.</p>
Strong Password	<p>Allows you to enforce the option to always set strong passwords.</p> <p>Default Setting: Enable Strong Password is not selected.</p> <p>NOTE: If Strong Password is enabled, Admin and System passwords must contain at least one uppercase character, one lowercase character and be at least 8 characters long.</p>
Password Configuration	<p>Allows you to determine the minimum and maximum length of Administrator and System passwords.</p>
Password Bypass	<p>Allows you to enable or disable the permission to bypass the System and the Internal HDD password, when they are set. The options are:</p> <ul style="list-style-type: none">· Disabled· Reboot bypass <p>Default setting: Disabled</p>
Password Change	<p>Allows you to enable the disable permission to the System and Hard Drive passwords when the admin password is set.</p> <p>Default setting: Allow Non-Admin Password Changes is selected.</p>
Non-Admin Setup Changes	<p>Allows you to determine whether changes to the setup options are allowed when an Administrator Password is set. If disabled the setup options are locked by the admin password. The option "Allow Wireless Switch changes" is disabled by default</p>
UEFI Capsule Firmware Updates	<p>Allows you to control whether this system allows BIOS updates via UEFI capsule update packages.</p> <ul style="list-style-type: none">· Enable UEFI Capsule Firmware Updates (enabled by default)
TPM 2.0 Security	<p>Allows you to enable the Trusted Platform Module (TPM) during POST. The options are:</p>

Option	Description
	<ul style="list-style-type: none"> · TPM On: This option is enabled by default. · Clear · PPI Bypass for Enabled Commands · Attestation Enable (This option is enabled by default) · Key Storage Enable (This option is enabled by default) · PPI Bypass for Disable Commands · PPI Bypass for Clear Commands (This option is enabled by default) · SHA-256: This option is enabled by default. · Disabled · Enabled (This option is enabled by default) <p data-bbox="338 527 1331 562">NOTE: To upgrade or downgrade TPM1.2/2.0, download the TPM wrapper tool (software).</p>
Computrace	<p data-bbox="331 600 1174 630">Allows you to activate or disable the optional Computrace software. The options are:</p> <ul style="list-style-type: none"> · Deactivate · Disable · Activate <p data-bbox="338 779 1457 842">NOTE: The Activate and Disable options will permanently activate or disable the feature and no further changes will be allowed</p>
CPU XD Support	<p data-bbox="331 877 983 907">Allows you to enable the Execute Disable mode of the processor.</p> <p data-bbox="331 915 683 947">Enable CPU XD Support (default)</p>
OROM Keyboard Access	<p data-bbox="331 989 1489 1050">Allows you to set an option to enter the Option ROM Configuration screens using hotkeys during boot. The options are:</p> <ul style="list-style-type: none"> · Enabled · One Time Enable · Disabled <p data-bbox="331 1203 572 1230">Default setting: Enabled</p>
Admin Setup Lockout	<p data-bbox="331 1276 1219 1306">Allows you to prevent users from entering Setup when an Administrator password is set.</p> <p data-bbox="331 1314 580 1346">Default Setting: Disabled</p>
Master Password Lockout	<p data-bbox="331 1388 1466 1449">Allows you to disable master password support. Hard disk password need to be cleared before the setting can be changed</p> <ul style="list-style-type: none"> · Enable Master Password Lockout <p data-bbox="331 1528 576 1556">Default setting: Disabled</p>

Secure Boot screen options

Option	Description
Secure Boot Enable	<p data-bbox="331 1757 900 1787">This option enables or disables the Secure Boot feature.</p> <ul style="list-style-type: none"> · Disabled · Enabled

Option	Description
	Default setting: Enabled.
Expert Key Management	<p>Allows you to manipulate the security key databases only if the system is in Custom Mode. The Enable Custom Mode option is disabled by default. The options are:</p> <ul style="list-style-type: none"> · PK (default) · KEK · db · dbx <p>If you enable the Custom Mode, the relevant options for PK, KEK, db, and dbx appear. The options are:</p> <ul style="list-style-type: none"> · Save to File—Saves the key to a user-selected file · Replace from File—Replaces the current key with a key from a user-selected file · Append from File—Adds a key to the current database from a user-selected file · Delete—Deletes the selected key · Reset All Keys—Resets to default setting · Delete All Keys—Deletes all the keys <p>NOTE: If you disable the Custom Mode, all the changes made will be erased and the keys will restore to default settings.</p>

Intel Software Guard Extensions

Option	Description
Intel SGX Enable	<p>This field specifies you to provide a secured environment for running code/storing sensitive information in the context of the main OS. The options are:</p> <ul style="list-style-type: none"> · Disabled · Enabled · Software Controlled (default)
Enclave Memory Size	<p>This option sets SGX Enclave Reserve Memory Size. The option are:</p> <ul style="list-style-type: none"> · 32 MB · 64 MB · 128 MB

Performance screen options

Option	Description
Multi Core Support	<p>This field specifies whether the process has one or all cores enabled. The performance of some applications improves with the additional cores.</p> <ul style="list-style-type: none"> · All: This option is selected by default. · 1 · 2 · 3
Intel SpeedStep	Allows you to enable or disable the Intel SpeedStep feature.

Option	<p>Description</p> <ul style="list-style-type: none"> · Enable Intel SpeedStep <p>Default setting: The option is enabled.</p>
C-States Control	<p>Allows you to enable or disable the additional processor sleep states.</p> <ul style="list-style-type: none"> · C states <p>Default setting: The option is enabled.</p>
Intel TurboBoost	<p>Allows you to enable or disable the Intel TurboBoost mode of the processor.</p> <ul style="list-style-type: none"> · Enable Intel TurboBoost <p>Default setting: The option is enabled.</p>
Hyper-Thread Control	<p>Allows you to enable or disable the Hyper-Threading in the processor.</p> <ul style="list-style-type: none"> · Disabled · Enabled <p>Default setting: Enabled.</p>

Power Management screen options

Option	Description
AC Behavior	<p>Allows you to enable or disable the computer from turning on automatically when an AC adapter is connected.</p> <p>Default setting: Wake on AC is not selected.</p>
Enable Intel Speed Shift Technology	<p>the option Enable Intel Speed Shift Technology option is enabled by default.</p>
Auto On Time	<p>Allows you to set the time at which the computer must turn on automatically. The options are:</p> <ul style="list-style-type: none"> · Disabled · Every Day · Weekdays · Select Days <p>Default setting: Disabled</p>
USB Wake Support	<p>Allows you to enable USB devices to wake the system from Standby.</p> <p>i NOTE: This feature is only functional when the AC power adapter is connected. If the AC power adapter is removed during Standby, the system setup removes power from all the USB ports to conserve battery power.</p> <ul style="list-style-type: none"> · Enable USB Wake Support · Wake on Dell USB-C Dock: This option is enabled by default.
Wireless Radio Control	<p>Allows you to enable or disable the feature that automatically switches from wired or wireless networks without depending on the physical connection.</p> <ul style="list-style-type: none"> · Control WLAN Radio

Option	<p>Description</p> <ul style="list-style-type: none"> · Control WWAN Radio <p>Default setting: The options are disabled.</p>
Wake on LAN/WLAN	<p>Allows you to enable or disable the feature that powers on the computer from the Off state when triggered by a LAN signal.</p> <ul style="list-style-type: none"> · Disabled · LAN Only · WLAN Only · LAN or WLAN <p>Default setting: Disabled</p>
Block Sleep	<p>This option lets you block entering to sleep (S3 state) in operating system environment.</p> <p>Block Sleep (S3 state)</p> <p>Default setting: This option is disabled</p>
Peak Shift	<p>This option enables you to minimize the AC power consumption during the peak power times of day. After you enable this option, your system runs only in battery even if the AC is attached.</p>
Advanced Battery Charge Configuration	<p>This option enables you to maximize the battery health. By enabling this option, your system uses the standard charging algorithm and other techniques, during the non-work hours to improve the battery health.</p> <p>Disabled</p> <p>Default setting: Disabled</p>
Primary Battery Charge Configuration	<p>Allows you to select the charging mode for the battery. The options are:</p> <ul style="list-style-type: none"> · Adaptive (default) · Standard — Fully charges your battery at a standard rate. · ExpressCharge — The battery charges over a shorter period of time using Dell's fast charging technology. This option is enabled by default. · Primarily AC use · Custom <p>If Custom Charge is selected, you can also configure Custom Charge Start and Custom Charge Stop.</p> <p>NOTE: All charging mode may not be available for all the batteries. To enable this option, disable the Advanced Battery Charge Configuration option.</p>
Type-C Connector Power	<p>This option lets you set the maximum power that can be drawn from the Type-C connector.</p> <ul style="list-style-type: none"> · 7.5 Watts (default) · 15 Watts

POST Behavior screen options

Option	Description
Adapter Warnings	<p>Allows you to enable or disable the system setup (BIOS) warning messages when you use certain power adapters.</p> <p>Default setting: Enable Adapter Warnings</p>

Option	Description
Keypad (Embedded)	<p>Allows you to choose one of two methods to enable the keypad that is embedded in the internal keyboard.</p> <ul style="list-style-type: none"> · Fn Key Only: This option is enabled by default. · By Numlock <p>NOTE: When setup is running, this option has no effect. Setup works in Fn Key Only mode.</p>
Numlock Enable	<p>Allows you to enable the Numlock option when the computer boots.</p> <p>Enable Numlock. This option is enabled by default.</p>
Fn Key Emulation	<p>Allows you to set the option where the Scroll Lock key is used to simulate the Fn key feature.</p> <p>Enable Fn Key Emulation (default)</p>
Fn Lock Options	<p>Allows you to let hot key combinations Fn + Esc toggle the primary behavior of F1–F12, between their standard and secondary functions. If you disable this option, you cannot toggle dynamically the primary behavior of these keys. The available options are:</p> <ul style="list-style-type: none"> · Fn Lock. This option is selected by default. · Lock Mode Disable/Standard · Lock Mode Enable/Secondary
Fastboot	<p>Allows you to speed up the boot process by bypassing some of the compatibility steps. The options are:</p> <ul style="list-style-type: none"> · Minimal · Thorough (default) · Auto
Extended BIOS POST Time	<p>Allows you to create an additional preboot delay. The options are:</p> <ul style="list-style-type: none"> · 0 seconds. This option is enabled by default. · 5 seconds · 10 seconds
Full Screen Logo	<p>This option will display full screen logo if your image match screen resolution</p> <ul style="list-style-type: none"> · Enable Full Screen Logo
Warnings and Error	<p>This option will cause the boot process to only pause when warnings or errors are detected.</p> <ul style="list-style-type: none"> · Prompt on Warnings and Errors This option is enabled by default. · Continue on Warnings · Continue on Warnings and Errors <p>NOTE: Error deemed critical to the operation of the system hardware will always halt the system.</p>


Manageability

Option	Description
USB Provision	The option "Enable USB Provision" is not selected by default.
MEBx Hotkey	The option Enable MEBx Hotkey is selected by default.

Virtualization support screen options

Option	Description
Virtualization	Allows you to enable or disable the Intel Virtualization Technology. Enable Intel Virtualization Technology: This option is enabled by default.
VT for Direct I/O	Enables or disables the Virtual Machine Monitor (VMM) from utilizing the additional hardware capabilities provided by Intel® Virtualization technology for direct I/O. Enable VT for Direct I/O: This option is enabled by default.
Trusted Execution	This option specifies whether a Measured Virtual Machine Monitor (MVMM) can utilize the additional hardware capabilities provided by Intel Trusted Execution Technology, the TPM Virtualization Technology, and Virtualization technology for direct I/O must be enabled to use this feature. Trusted Execution: This option is disabled by default.

Wireless screen options

Option	Description
Wireless Switch	Allows to set the wireless devices that can be controlled by the wireless switch. The options are: <ul style="list-style-type: none">· WWAN· GPS (on WWAN Module)· WLAN· Bluetooth All the options are enabled by default.  NOTE: For WLAN and WiGig enable or disable controls are tied together and they cannot be enabled or disabled independently.
Wireless Device Enable	Allows you to enable or disable the internal wireless devices. <ul style="list-style-type: none">· WWAN/GPS· WLAN· Bluetooth All the options are enabled by default.

Maintenance screen options

Option	Description
Service Tag	Displays the Service Tag of your computer.
Asset Tag	Allows you to create a system asset tag if an asset tag is not already set. This option is not set by default.
BIOS Downgrade	This controls flashing of the system firmware to previous revisions. <ul style="list-style-type: none">· Allows BIOS Downgrade (enabled by default)

Option	Description
Data Wipe	<p data-bbox="331 155 1453 212">This field allows users to erase the data securely from all internal storage devices. The following is list of devices affected:</p> <ul data-bbox="331 239 616 373" style="list-style-type: none"><li data-bbox="331 239 616 264">· Internal SATA HDD/SSD<li data-bbox="331 275 616 300">· Internal M.2 SATA SDD<li data-bbox="331 310 616 336">· Internal M.2 PCIe SSD<li data-bbox="331 346 616 371">· Internal eMMC
BIOS Recovery	<p data-bbox="331 422 1489 478">This field allows you to recover from certain corrupted BIOS conditions from a recover file on the user primary hard drive or an external USB key.</p> <ul data-bbox="331 506 898 604" style="list-style-type: none"><li data-bbox="331 506 898 531">· BIOS Recovery from Hard Drive (enabled by default)<li data-bbox="331 541 580 567">· BIOS Auto-Recovery<li data-bbox="331 577 687 602">· Always perform Integrity Check

Software

This chapter details the supported operating systems along with instructions on how to install the drivers.

Topics:

- [Operating system configurations](#)
- [Downloading drivers](#)

Operating system configurations

This topic lists the operating system supported by your system.

Table 15. Operating systems

Microsoft Windows	Microsoft® Windows 10 Pro 64 bit
	Mircosoft® Windows 10 Home 64 bit
Other	Ubuntu 16.04 LTS 64-bit
	NeoKylin 6.0 64 bit

Downloading drivers

- 1 Turn on the notebook.
- 2 Go to **Dell.com/support**.
- 3 Click **Product Support**, enter the Service Tag of your notebook, and then click **Submit**.

 **NOTE: If you do not have the Service Tag, use the auto detect feature or manually browse for your notebook model.**

- 4 Click **Drivers and Downloads**.
- 5 Select the operating system installed on your notebook.
- 6 Scroll down the page and select the driver to install.
- 7 Click **Download File** to download the driver for your notebook.
- 8 After the download is complete, navigate to the folder where you saved the driver file.
- 9 Double-click the driver file icon and follow the instructions on the screen.

Chipset driver

The chipset driver helps the system identify the components and install necessary drivers accurately. Verify that the chipset was installed in the system by checking the below controllers. Many of the common devices are visible under Other Devices if no drivers are installed. The unknown devices disappear once you install the chipset driver.

Make sure to install the following drivers, some of them may exist by default.

- Intel HID Event Filter Driver
- Intel Dynamic Platform and Thermal Framework Driver
- Intel serial IO driver
- Management Engine

- Realtek PCI-E memory card

Serial IO driver

Verify if the drivers for Touchpad, IR camera, and keyboard and are installed.



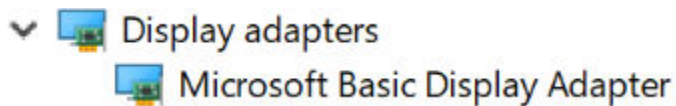
Figure 4. Serial IO driver

Graphics controller driver

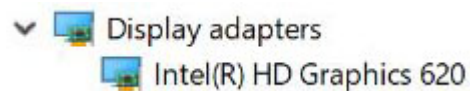
Verify if the graphics controller driver is already installed in the computer.

Table 16. Graphics controller driver

Before Installation

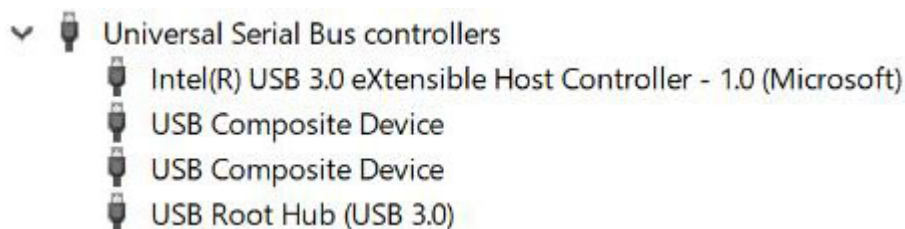


After Installation



USB drivers

Verify if the USB drivers are already installed in the computer.

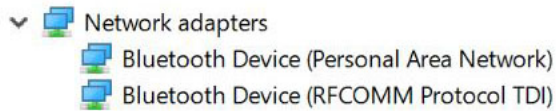


Network drivers

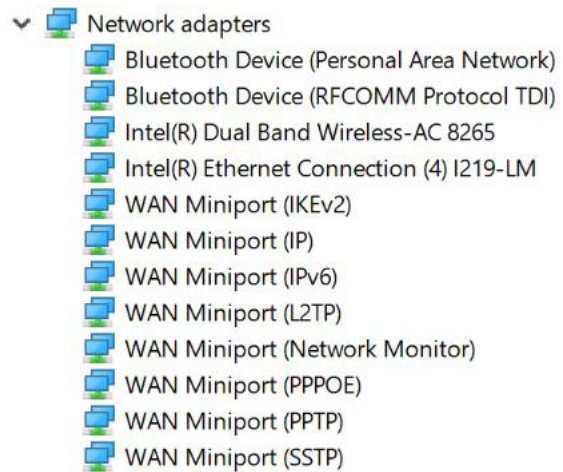
Install the WLAN and Bluetooth drivers from the Dell support site.

Table 17. Network drivers

Before installation



After installation

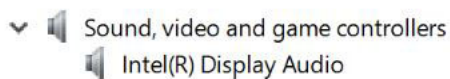


Realtek Audio

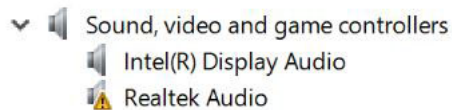
Verify if audio drivers are already installed in the computer.

Table 18. Realtek audio

Before Installation



After Installation



Serial ATA drivers

Install the latest Intel Rapid Storage driver for best performance. Using the default Windows storage drivers is not recommended. Verify if the default serial ATA drivers are installed in the computer.



Security drivers

This section lists the security devices in the Device Manager.



Security device drivers

Verify if the security device drivers are installed in the computer.

- ▼  Security devices
 -  Trusted Platform Module 2.0

Fingerprint sensor drivers

Verify if the Fingerprint sensor drivers are installed in the computer.

- ▼  ControlVault Device
 -  Dell ControlVault w/o Fingerprint Sensor

Troubleshooting

Enhanced Pre-Boot System Assessment ePSA diagnostics

The ePSA diagnostics (also known as system diagnostics) performs a complete check of your hardware. The ePSA is embedded with the BIOS and is launched by the BIOS internally. The embedded system diagnostics provides a set of options for particular devices or device groups allowing you to:

- Run tests automatically or in an interactive mode
- Repeat tests
- Display or save test results
- Run thorough tests to introduce additional test options to provide extra information about the failed device(s)
- View status messages that inform you if tests are completed successfully
- View error messages that inform you of problems encountered during testing

⚠ CAUTION: Use the system diagnostics to test only your computer. Using this program with other computers may cause invalid results or error messages.

ℹ NOTE: Some tests for specific devices require user interaction. Always ensure that you are present at the computer terminal when the diagnostic tests are performed.

You can launch the ePSA diagnostics in two ways:

- 1 Power-on the computer.
- 2 As the computer boots, press the F12 key as the Dell logo appears.
- 3 On the boot menu screen, select the **Diagnostics** option.
The **Enhanced Pre-boot System Assessment** window displays, listing all devices detected in the computer. The diagnostics starts running the tests on all the detected devices.
- 4 If you wish to run a diagnostic test on a specific device, press Esc and click **Yes** to stop the diagnostic test.
- 5 Select the device from the left pane and click **Run Tests**
- 6 If there are any issues, error codes are displayed.
Note the error code and contact Dell.

OR

- 1 Shutdown the computer.
- 2 Press and hold the fn key, while pressing the power button, and then release both.
The **Enhanced Pre-boot System Assessment** window displays, listing all devices detected in the computer. The diagnostics starts running the tests on all the detected devices.
- 3 On the boot menu screen, select the **Diagnostics** option.
The **Enhanced Pre-boot System Assessment** window displays, listing all devices detected in the computer. The diagnostics starts running the tests on all the detected devices.
- 4 If you wish to run a diagnostic test on a specific device, press Esc and click **Yes** to stop the diagnostic test.
- 5 Select the device from the left pane and click **Run Tests**
- 6 If there are any issues, error codes are displayed.
Note the error code and contact Dell.

Running the ePSA Diagnostics

Invoke diagnostics boot by either of the methods that are suggested below:

- 1 Power on the computer.
- 2 As the computer boots, press the F12 key when the Dell logo is displayed.
- 3 In the boot menu screen, use Up/Down arrow key to select the **Diagnostics** option and then press **Enter**.

NOTE: The Enhanced Pre-boot System Assessment window displays, listing all devices detected in the computer. The diagnostics starts running the tests on all the detected devices.

- 4 Press the arrow in the lower-right corner to go to the page listing.
The detected items are listed and tested.
- 5 To run a diagnostic test on a specific device, press Esc and click **Yes** to stop the diagnostic test.
- 6 Select the device from the left pane and click **Run Tests**.
- 7 If there are any issues, error codes are displayed.
Note the error code and contact Dell.
or
- 8 Shut down the computer.
- 9 Press and hold the Fn key, while pressing the power button, and then release both.
- 10 Repeat steps 3–7 above.

Real Time Clock reset

The Real Time Clock (RTC) reset function allows you to recover your Dell system from **No POST/No Boot/No Power** situations. To initiate the RTC reset on the system make sure system is in a power-off state and is connected to power source . Press and hold the power button for 25 seconds and then release the power button. Go to [how to reset real time clock](#).

NOTE: If AC power is disconnected from the system during the process or the power button is held longer than 40 seconds, the RTC reset process is aborted.

The RTC reset will reset the BIOS to Defaults, un-provision Intel vPro and reset the system date and time. The following items are unaffected by the RTC reset:

- Service Tag
- Asset Tag
- Ownership Tag
- Admin Password
- System Password
- HDD Password
- TPM on and Active
- Key Databases
- System Logs

The following items may or may not reset based on your custom BIOS setting selections:

- The Boot List
- Enable Legacy OROMs
- Secure Boot Enable
- Allow BIOS Downgrade

Contacting Dell

NOTE: If you do not have an active Internet connection, you can find contact information on your purchase invoice, packing slip, bill, or Dell product catalog.

Dell provides several online and telephone-based support and service options. Availability varies by country and product, and some services may not be available in your area. To contact Dell for sales, technical support, or customer service issues:

- 1 Go to **Dell.com/support**.
- 2 Select your support category.
- 3 Verify your country or region in the **Choose a Country/Region** drop-down list at the bottom of the page.
- 4 Select the appropriate service or support link based on your need.