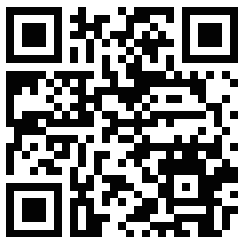
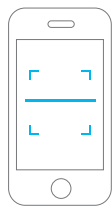


1 Install the e-Control APP



Scan QR code to download



e-Control

Method : Scan the QR code from the packing box to download e-Control.*
*Your phone settings must be set to "Allow installation of apps from unknown sources", otherwise the app cannot be downloaded.



Customer Service Hotline
+86 400 0900 955
support@ibroadlink.com

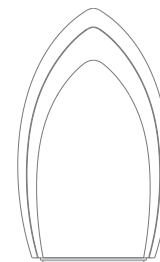
Hangzhou Gubei Electronics Technology Co., Ltd.
Add - Room106, No.1 Building, No.611 Jianghong Road, Binjiang District, Hangzhou, 310052, Zhejiang, China



e-Air
Smart Air Detector

User Manual

Packing List



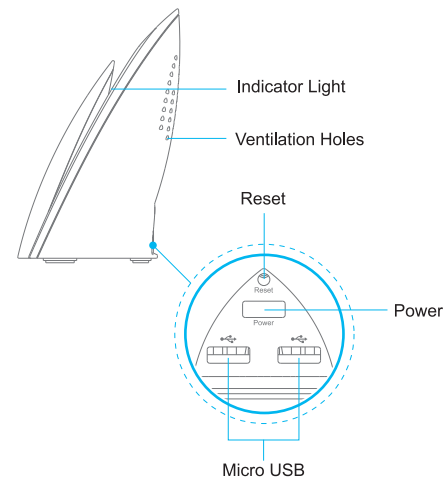
A1



AC/DC Adapter



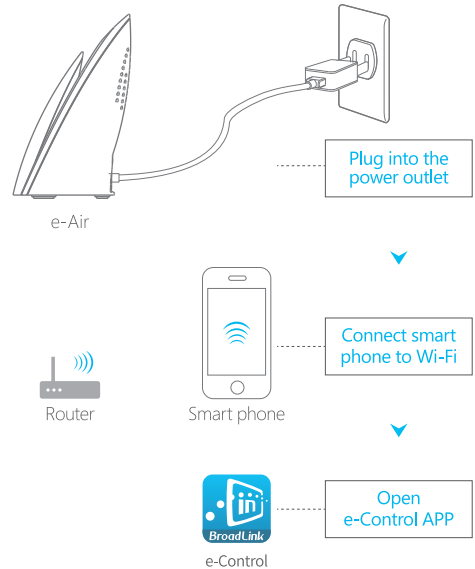
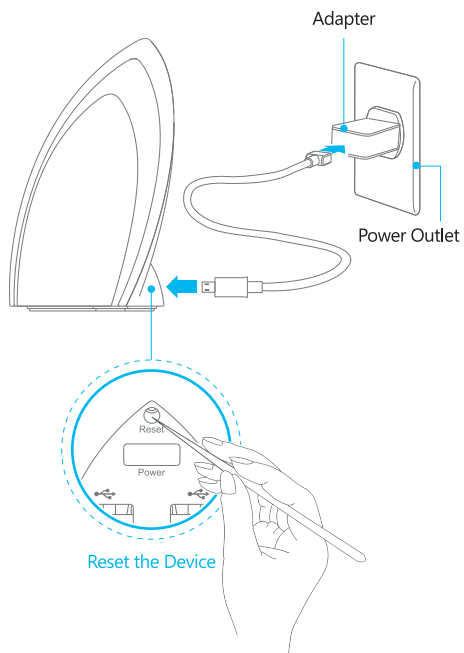
USB Cable



2 Configure the Device

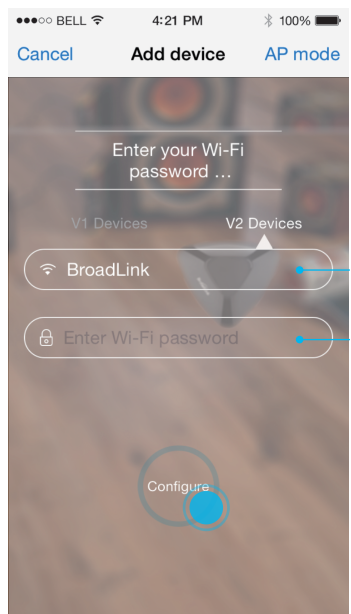
3 Configure the Network

4 Add Device



- Connect the USB cable with power adapter and e-Air and plug the adapter into a power outlet.
- Place the e-Air in the area of Wi-Fi coverage, and connect your smart phone to the Wi-Fi network.

- Power on the e-Air and ensure the indicator light is blinking quickly 5-6 times per sec, which means the e-Air is waiting for configuration. Open your e-Control App to configure the device by selecting "Add Device". Configuration is successful when the light blinking slows down and stops. You will then see the e-Air is on the "Device List".
- Otherwise, please configure again. You may need to long press the reset button for more than 3 sec. until the indicator light is blinking quickly.



- Enter the name and password of your Wi-Fi network, then tap the configuration button.
- Indicator light is off: Successful configuration.
- Indicator light is blinking slowly: The device is unable to connect to the router, please check your password and reset the e-Air.
- Indicator light is blinking quickly: The device has not received the configuration request, please reset the e-Air and configure again.

FAQ

- **What does it mean when the indicator light is blinking:**
 - Continuous quick blink: Original factory state, waiting for configuration. Please tap "Configure" to start.
 - Slow blink once every 3 sec: The device is not connected to the Wi-Fi network. Check if your Wi-Fi is on.
 - Blink once every sec: Unsuccessful configuration. Please reset the device and configure again.
 - Slow blink 4 times and stop for 1 sec. and repeats the cycle: Waiting for the AP Config.
- **What is AP Config:**
 - Ensure the indicator light is slowly blinking 4 times and stop for 1 sec (Long press the reset button until LED is blinking quickly, then long press again until LED is blinking slowly).
 - Choose "Add Device", and tap "AP Configure" on the top right corner.
 - Choose broadlinkProv when skipping to a Wi-Fi list.
 - Tap the return button and enter a Wi-Fi list again. Now you can choose your home Wi-Fi to connect.
- **How to protect my device and avoid being searched by others:**
 - Only the one connected to your Wi-Fi network can find your device. Once you have configured your device you can lock it on the "Device Info" page. This means no one else on your network can access the device.

Warranty

- 1-Year Limited Warranty.

Note

- Please refer to the User Manual in the e-Control app for more details on how to use the device.
- Please follow the instruction to set up your device. In case of any product issues, please contact the authorized dealers or the BroadLink Service Centre.
- Specification may be altered without prior notice.