

ZYXEL



WRE6602

AC1200 Dual-Band WiFi Range Extender

The Zyxel WRE6602 AC1200 WiFi Dual-Band Range Extender boosts your existing wireless network range. Combined WiFi speeds of up to 1200 Mbps, the WRE6602's dual band MU-MIMO technology brings the fast and reliable connection for all your wireless devices. Use the simple Smart Push Button or download Easy Link App for your smartphone to quickly extend your WiFi network.

The range extender can also act as an access point, enabling you to create a powerful wireless network capable of speeds of up to 300 Mbps at 2.4 GHz and 867 Mbps at 5 GHz, delivering the best possible WiFi performance.



Eliminate wireless dead zones



Seamless dual-band AC1200 connections



Work with any router or gateway



One button for quick and easy setup

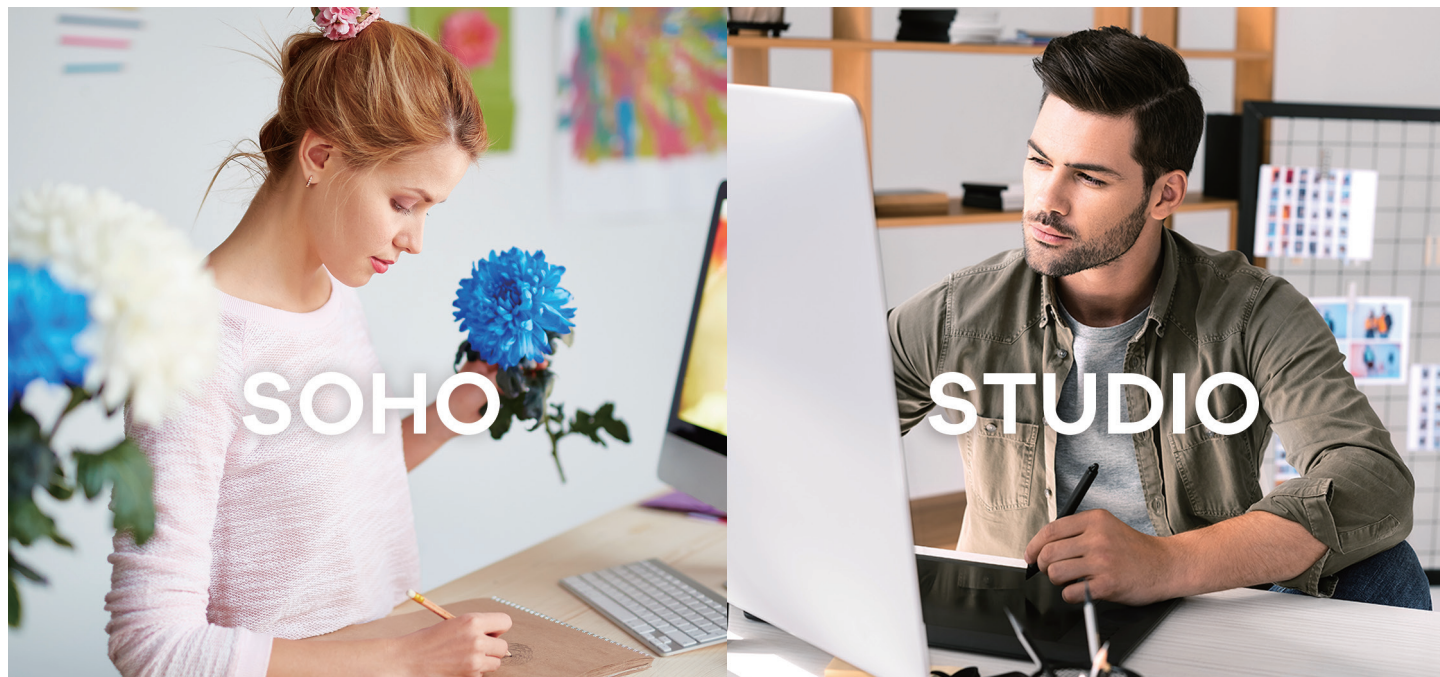


Additional access point mode supported

Benefits

Eliminate dead zones and gain reliable WiFi for better experience

The Zyxel WRE6602 connects to your router wirelessly and helps extend it to strengthen signals to those dead spots for all your connected wireless mobile device. WRE6602 also reduces signal interference to creating reliable WiFi coverage. Not only for homes, but it's also suitable for SOHO or personal studios by seamlessly delivering better WiFi for your customers and employees. Create a powerful network to deliver efficient work and grow your business.



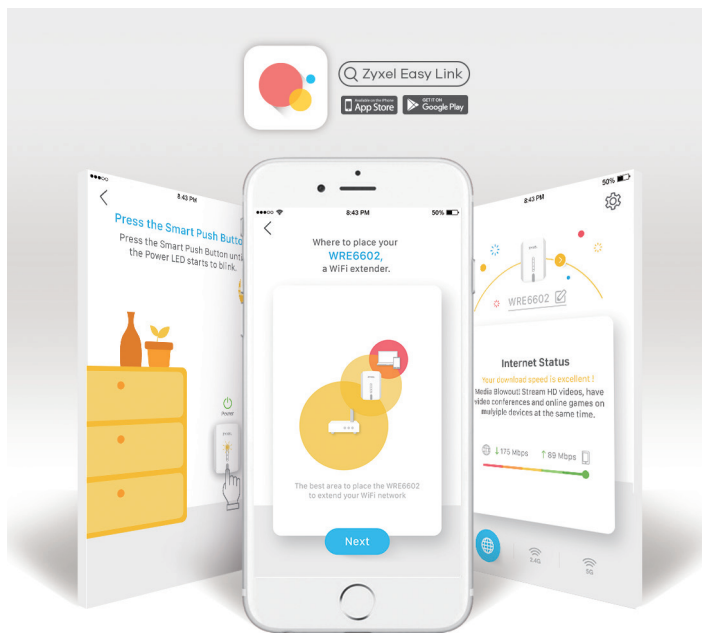
Smart Push setup

No more complicated setup, just push the WPS button on your WiFi router and the Zyxel extender to get your router's WiFi network extended!



Easylink app for guided setup

No WPS? No problem. Our Easylink app for both iOS and Android can get your WiFi network extended through your smartphone with its easy step-by-step guide.



Location indicators

The smart LED indicates the strength of the receiving signal of the Zyxel WRE6602 from the existing wireless network, making it easier to find the best spot to place the extender for maximum wireless coverage.



Two WiFi modes

Supports both for extending your existing WiFi network (repeater mode) or creating a stand-alone powerful WiFi network (access point mode).



Specifications

System Specifications

Wireless Standard

- 802.11 a/b/g/n/ac

Wireless Speed

- Transmit: 300 Mbps* for 2.4 GHz and 867 Mbps* for 5 GHz
- Receive: 300 Mbps* for 2.4 GHz and 867 Mbps* for 5 GHz

Wireless Security

- 64/128 bit WEP, WPA-PSK/WPA2-PSK

Wireless Features

- Access point mode/Repeater mode
- WiFi Protected Setup (WPS)
- WiFi Multimedia (WMM)
- Auto channel selection

System Management

- Online firmware upgrade

Hardware Specifications

- LAN: One 10/100 Mbps Ethernet RJ-45 port with auto MDI/MDIX support
- LED indicators:
 - Power (Green)
 - WiFi signal (Green-Good/Red-Bad)
 - Smart push (Green)
 - LAN (Green)
- Button:
 - Smart push
 - Power on/off
- Switch: AP/Repeater mode
- Power:
 - Input: 100V to 240V AC, 50/60 Hz

Physical Specifications

- Item dimensions (WxDxH): 46.5 x 62.3 x 90.9 mm (1.83" x 2.45" x 3.57")
- Item weight: 103g (0.23 lb.)
- Packing dimensions (WxDxH): 155 x 75 x 135 mm (6.10" x 2.95" x 5.31")
- Packing weight: 285g (0.63 lb.)

Environmental Specifications

Operating Environment

- Temperature: 0°C to 40°C (32°F to 104°F)
- Humidity: 10% to 90% (Non-condensing)

Storage Environment

- Temperature: -30°C to 70°C (-22°F to 158°F)
- Humidity: 10% to 95% (Non-condensing)

Certifications

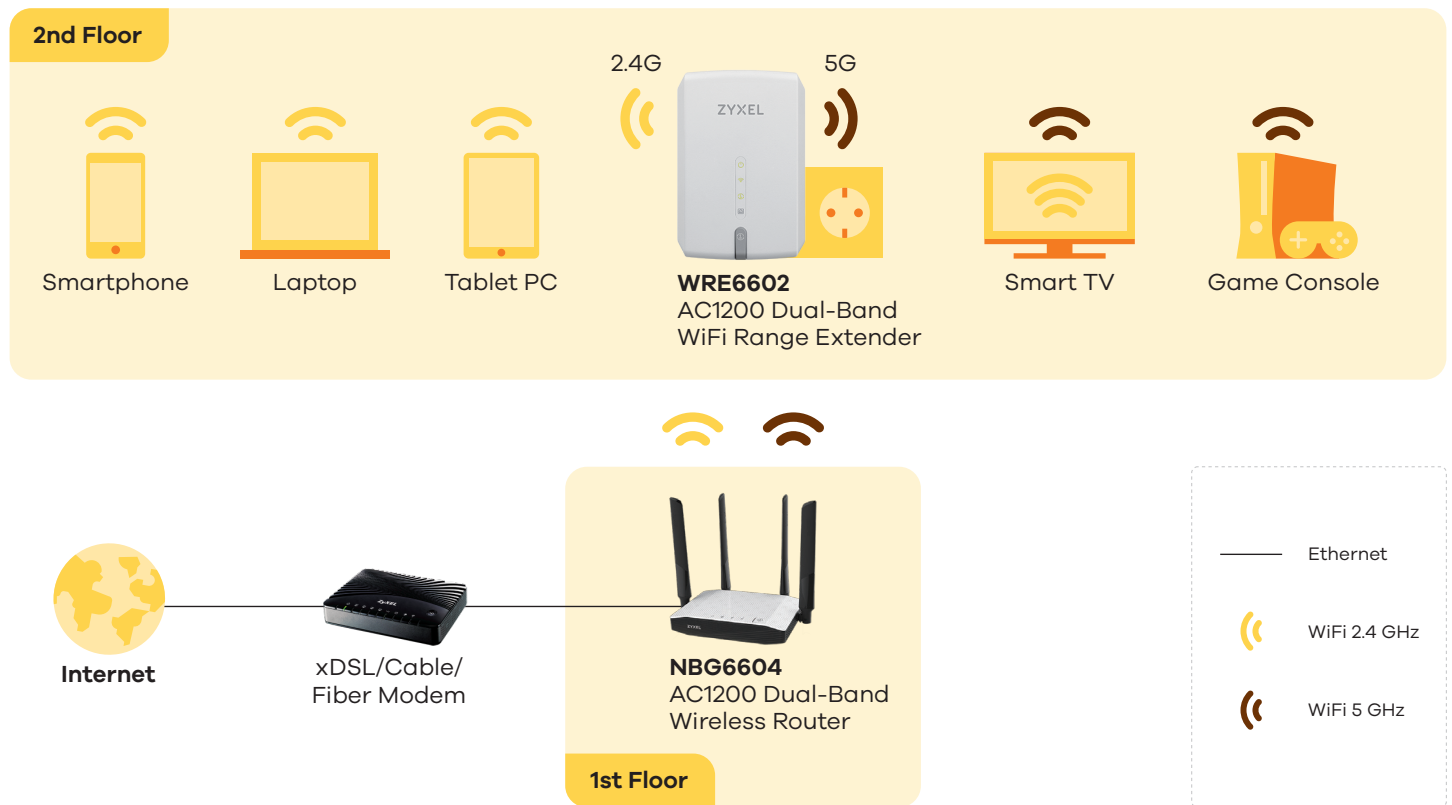
- Safety: CE LVD
- EMC: CE

Package Contents

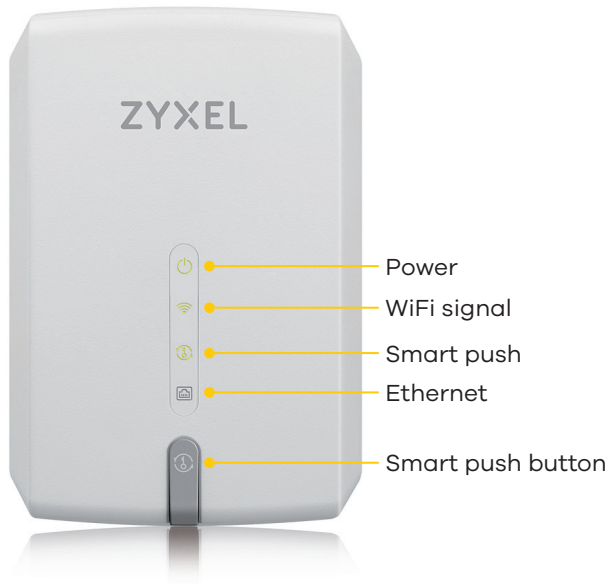
- Wireless range extender
- Quick start guide (including warranty form)
- Safety and DoC

* The maximum wireless data transfer rates of up to 300 Mbps at 2.4 GHz and 867 Mbps at 5 GHz in simultaneous transmission are derived from the IEEE Standard 802.11 specifications. Actual data transfer rates may vary from network conditions including: distance, network traffics, building site material/construction, interference from other wireless devices and other adverse factors.

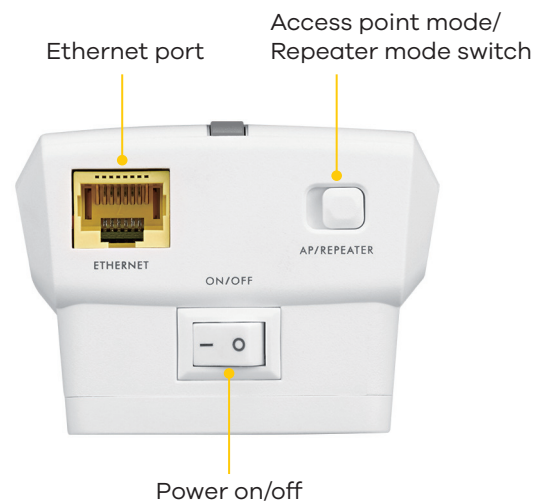
Application Diagram



Front Panel



Bottom Panel



For more product information, visit us on the web at www.zyxel.com

Copyright © 2018 Zyxel Communications Corp. All rights reserved. Zyxel, Zyxel logo are registered trademarks of Zyxel Communications Corp. All other brands, product names, or trademarks mentioned are the property of their respective owners. All specifications are subject to change without notice.

Datasheet WRE6602



5-100-00218004 05/18