

# CUMULUS TENSION

Electric Screens

## ADVANTAGES:

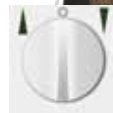
- Compact size white painted aluminum case
- Perfect flat projection area due to the side tension system
- Increased perceived contrast ratio due to black frame picture surrounding
- Easy to install
- "Invisible" brackets for wall/ceiling installation included
- More space for installation of other devices directly under the screen due to surface retracted at the front side of casing
- Long life of the projection fabric secured with automatic stop for rolling and re-rolling
- Easy integration with external control systems
- 2 year warranty (door-to-door)
- Extended 5 year warranty for electric motor device
- Customized screen program capable
- Low noise (SILENT) electric motor

## FEATURES:

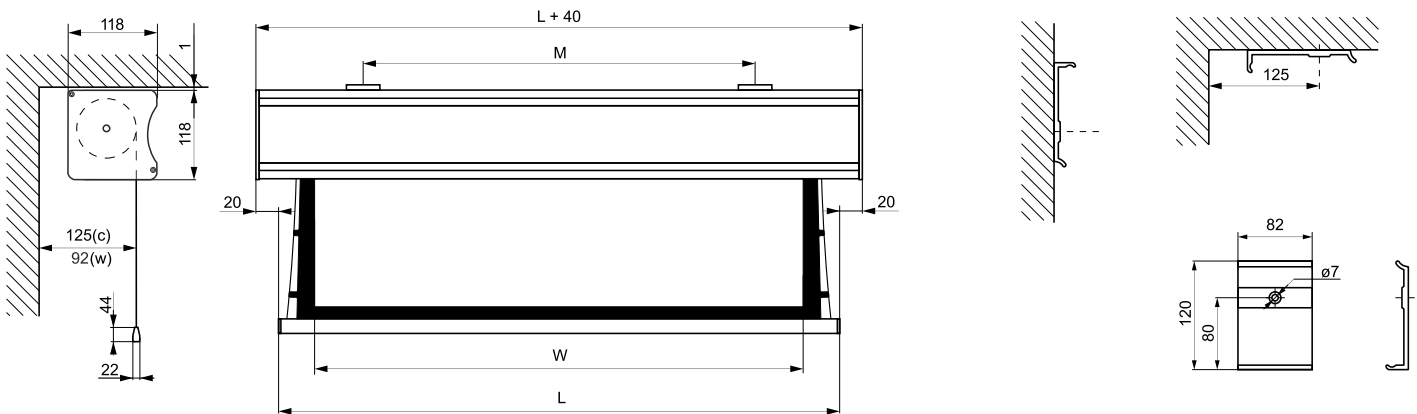
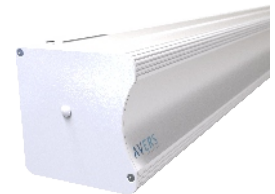
- Fabrics width range: 180 - 270 cm
- 4:3, 16:9 or 16:10 aspect ratios
- Dedicated fabrics:
  - for home cinema: Matt Grey g=0.8, Matt White g=1.0
  - for presentation : Matt White g=1.0
- 60mm diameter Aluminium rolling tube
- Wire steering with the wall switch included
- Motor cable lead out from left side of casing

## OPTIONAL ACCESSORIES:

- IR-remote control system (ALFA-IR)
- Radio remote control systems (ALFA-RADIO, DELTA)
- Projector triggered control systems (ALFA-TRIGGER, ALFA TRIGGER WIRELESS, BETA)
- RAL palette powder painting
- Black borders with extra Top
- Extra wall/ceiling spacers (SH HOLDER)
- In-ceiling installation kit for hidden installation (INCEILING KIT)
- Brackets for screen installation under false ceiling (SRMS)



BASIC EQUIPMENT  
WALL SWITCH



Aspect ratio	Dimensions		Border		Bottom bar width		Image diagonal BB, BT	Brackets distance	Weight	Transport box
	Fabrics Width W [cm]	Viewable area BB, BT w x h [cm]	BB type	BT type	BB type L[cm]	BT type L[cm]				
4:3	180	180 x 135	+	+	207,5	212,0	84	95 - 175	9,80	230 x 18 x 18
4:3	210	210 x 160	+	+	240,7	245,4	98	110 - 205	11,70	260 x 18 x 18
4:3	240	240 x 180	+	+	273,5	280,2	113	125 - 235	13,90	290 x 18 x 18
4:3	270	270 x 202	+	-	310,2	-	128	140 - 265	15,60	320 x 18 x 18
16:9	180	180 x 102	+	+	204,8	208,0	77	95 - 175	9,50	230 x 18 x 18
16:9	210	210 x 119	+	+	236,3	237,7	90	110 - 205	11,30	260 x 18 x 18
16:9	240	240 x 135	+	+	268,0	272,0	104	125 - 235	13,50	290 x 18 x 18
16:9	270	270 x 152	+	+	302,3	302,7	117	140 - 265	15,00	320 x 18 x 18
16:10	180	180 x 113	+	+	205,8	209,0	79	95 - 175	9,70	230 x 18 x 18
16:10	210	210 x 131	+	+	237,3	238,7	93	110 - 205	11,50	260 x 18 x 18
16:10	240	240 x 150	+	+	269,0	273,0	107	125 - 235	13,70	290 x 18 x 18
16:10	270	270 x 169	+	+	303,3	303,7	121	140 - 265	15,30	320 x 18 x 18