



## EV2750-WT

### Your advantages

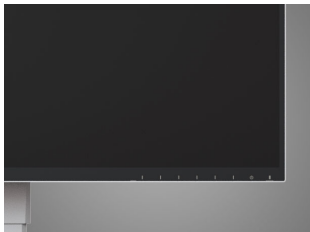


The EIZO FlexScan EV2750 is ideal for office use and all environments that value compact and modern design thanks to its 27-inch display with 2560 x 1440 pixels. For example, it is perfect for public areas, trading and sales floors, as well as control and monitoring stations. The housing has a very narrow bezel measuring approximately 1 mm. The front is completely flat and even the operating elements have been integrated. The profile and the back of the monitor also have a slimline, delicate appearance. The EV2750 features antireflection technology and the Auto Eco-View function, ensuring an anti-glare view of the screen, and the LCD featuring IPS technology ensures the greatest possible viewing angle. As a result, image content can easily be viewed and read. Hybrid image brightness control effectively prevents flickering. EIZO FlexScan EV2750 is perfect for users who value good design and ergonomics.

## Features

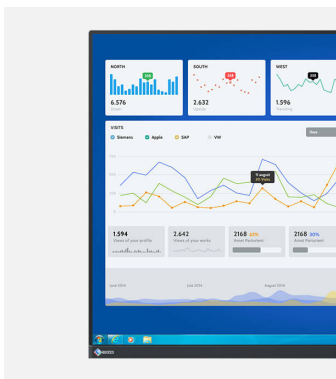
### Extra-chic full flat design

In elegant black or a luxury highlight in white: The ultra-thin design, with a housing frame that is just 1 mm thick and a fully flat front of the device. The black glass edge that is only around 6 mm thick is all that stands between the display and the frame at the sides and above. Even the operating elements and brand logo are integrated in the surface. The side profile and reverse also look slim and graceful. The monitor is a real eye-catcher, with plenty of space for all of your ideas.

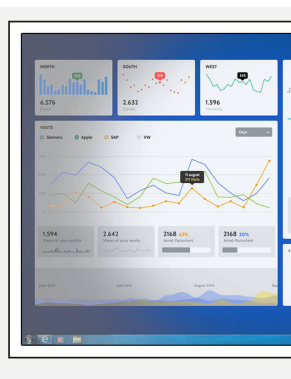


### Maximum image quality thanks to the IPS panel

The monitor is capable of all three key elements of excellent image quality: excellent resolution of 2560 x 1440 pixels, maximum contrast of 1000:1, and stable brightness of up to 350 cd/m<sup>2</sup>. That means you will experience razor-sharp text contours, brilliant graphics, and clear images. Thanks to the high-quality IPS panels with LED backlight, contrasts and colors remain stable from every viewing angle.



EIZO monitor



Conventional monitor



EIZO monitor

Conventional monitor

### Save electricity and your eyes with Auto-EcoView

At day, at night, bright, dark: No matter when and how you work, the Auto-EcoView function continuously measures changes of the ambient light and optimizes the monitor with ideal brightness values fully automatically by using a sensor. The benefits: Annoying glare is reduced, your eyes will not get tired as quickly. A special two-point control takes into account the brightest and darkest environment over the course of the day with the respectively desired screen brightness. Another advantage: Thanks to the automatic brightness adjustment, you will save up to 50% of your electricity costs in comparison to a monitor that is permanently operated at maximum brightness.

Of course, you can also continue to configure the monitor manually. EcoView Index is used for orientation on how environmentally friendly and economical your settings are.

### Anti-reflection coating: more image, less reflection

The EV2750-WT offers a surface with optimal anti-reflection coating. By minimizing glare from the spread of the reflected light, the anti-reflection coating effectively protects your eyes from straining. This keeps your eyes from getting as tired and allows you to sit comfortably in front of the screen, without having to sit in a forced position to prevent glare.



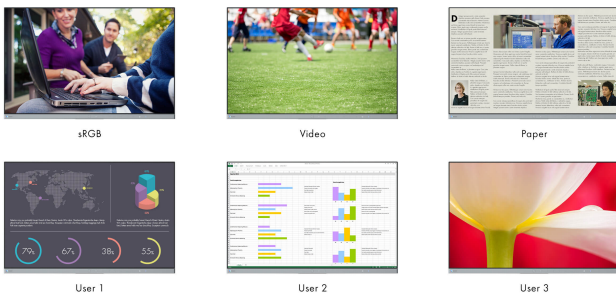
## Features

### Absolutely flicker-free:

To help protect your eyes, EIZO has developed a hybrid technology to control the backlight. This combines the benefits of the otherwise standard PWM (pulse width modulation) and DC (direct current) control. PWM control uses refresh rates of 18 kHz. The result: a flicker-free viewing experience. Flickering is reduced down to absolute freedom from flickering, without impairing image quality or color stability. In addition, the brightness can be set to less than 1% of the maximum value in darkly lit rooms. The benefit: Your screen remains free from glare even under these conditions.

### FineContrast modes: Optimized display at the press of a button

The FineContrast modes make it easier for you to work and look at images, texts, or films. Because when choosing color settings, it makes a difference whether you are looking at a film, editing an image, surfing the net, or writing texts. You can configure the respective presets for brightness, gamma correction, and color temperature at the press of a button. Thanks to the ScreenManager Pro software included, a mode can be allocated to each application, which is activated automatically when the program starts. For example, Paper mode simulates the pleasant contrast of books by reducing the blue light portion. In addition, user-defined settings can also be selected. A significant advantage for medical professionals is DICOM mode: It guarantees optimal image rendering for radiological images with the DICOM characteristic curve.

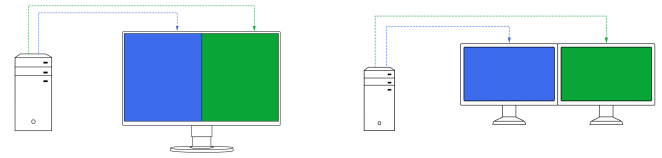


Sample display

### Picture by Picture

Picture-by-Picture mode enables different signal sources to be viewed independently on a single screen. You can select from five different views at the press of a button. You can quite con-

veniently display multiple applications in different layouts and sizes and use the Picture-by-Picture mode in Windows and Mac operating systems simultaneously where necessary.

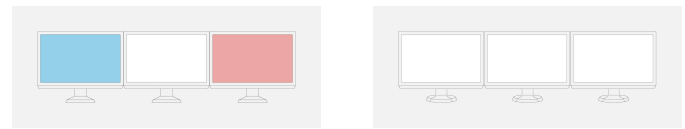


With Picture-by-Picture

With Picture-by-Picture

### ScreenManager Pro: For your personal settings

All FlexScan monitors include ScreenManager Pro software, which can be used to change color and EcoView settings using your mouse and keyboard instead of using the display menu. The signal cable or a USB connection is sufficient. What's more, you can also use the multi-monitor matching function to match all FlexScan monitors connected to the same PC.

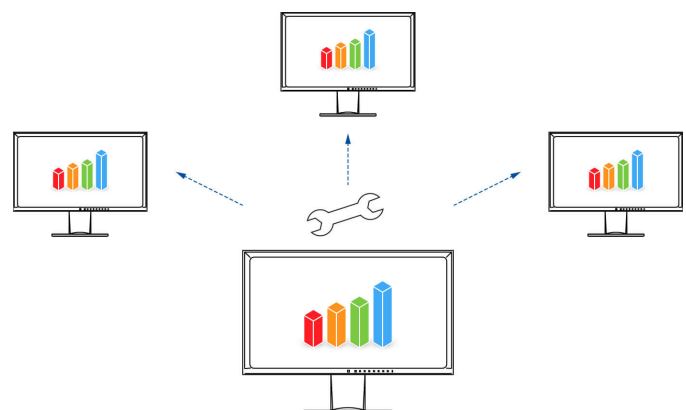


Without multi-monitor matching

With multi-monitor matching

### Monitor Configurator for cross-network settings

Reduced workload for network administrators: The software allows you to configure multiple monitors uniformly in a single step – via a USB connection. This saves you time and ensures you have the same settings on all screens. The configuration can be saved as an XML file and transferred to clients.



## Features

### Operation made easy thanks to the Button Guide

The Button Guide provides all functions at a glance. Touching the button is enough and the screen will show all functions and the corresponding control panel.



### Overdrive to quickly change images

Fast, faster, overdrive. The overdrive function accelerates switching time so that the gray-gray change takes only 5 ms on average. You can watch films and rapidly changing images without annoying afterglow.

### LED backlight: Economical in consumption, free from mercury

The monitors with an LED backlight help save the environment throughout their entire service life – from manufacturing through operation to disposal. For on the one hand they are characterized by particularly low electricity consumption. The typical consumption is just 22 Watt. On the other hand, they are free from mercury – a substance that is harmful to both humans and the environment and is very difficult to dispose of.



### Save up to 30% of energy with the EcoView Optimizer

Save electricity without compromising quality: The EcoView Optimizer reduces the background lighting fully automatically for dark images. This reduces electricity consumption by up to 30%. At the same time, the signal is amplified and the color tone values adjusted. The result: You will enjoy the image quality you are used to but consume less power.

### Zero-Watt consumption thanks to the power switch

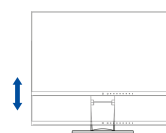
The monitors have an integrated mechanical power switch, which is extremely practical and energy-saving: If you switch off the monitor using the power switch, the device will stop consuming any power at all. Moreover, it consumes a maximum of 0.50 watt in standby mode.

### One monitor, many ports

It doesn't get easier than this: You can connect most of your devices, such as PC, laptop or cameras directly to the monitor because the monitor has a number of different ports. That makes your daily work easier.

### Flexible base

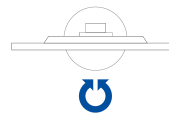
Ergonomic and stable: the adjustable base focuses on ergonomics. The monitor base can be twisted, turned, and tilted so that it is most comfortable for your back, neck, and sitting posture. The height can also be seamlessly adjusted and, depending on the model, lowered to the bottom of the base, allowing you to position the top row of the image ergonomically below eye level.



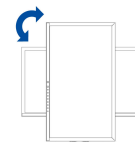
155 mm



Tilt up 35°, tilt down 5°



172° (right/left)



Rotation 90° clockwise and anti-clockwise

## Features

---

### Five-year warranty

EIZO grants a five-year warranty. This is possible thanks to the highly developed production process based on a simple principle of success: sophisticated and innovative monitor technology, made from high-end materials.



# Specification

## General

Item no.	EV2750-WT
Case colors	White
Solutions	Office
Product line	FlexScan
EAN	4995047047766
Variants	EV2750-BK (Color: Black)

## Display

RadiCS application classes	VIII
Screen size [in inches]	27
Screen size [in cm]	68
Format	16:9
Viewable image size (width x height)	597 x 336
Ideal and recommended resolution	2560 x 1440
Pixel Pitch Horizontal [ mm ]	0.23 x 0.23
Resolution Supported	2560 x 1440, 1920 x 1200, 1920 x 1080 (Full HD), 1600 x 1200, 1680 x 1050, 1280 x 1024, 1024 x 768, 800 x 600, 720 x 400, 640 x 480
Panel technology	IPS
Max. viewing angle horizontal	178 °
Max. viewing angle vertical	178 °
Number of colors or grayscale	16.7 million colors (display port, 8 Bit), 16.7 million colors (HDMI, 8 Bit), 16.7 million colors (DVI, 8 Bit)
Max. color space	sRGB
Max. brightness (typical) [in cd/m <sup>2</sup> ]	350
Max. dark room contrast (typical)	1000:1
Typical response time [gray/gray alternation]	5 ms
Backlight	LED

## Features

Color palette / look-up table	1.06 billion color tones / 10 Bit
Overdrive	✓
No flickering thanks to hybrid controls	✓
HDCP Decoder	✓
Preset color/grayscale modes	sRGB, Paper, DICOM, Movie, 2x free modes for user selection
DICOM tone curve	✓
OSD language	de, en, fr, es, it, se
Adjustment options	Brightness, Contrast, Gamma, Color saturation, Color temperature, Image position, Clock, Phase, Resolution, Eco Timer, FineContrast, Colour tone, Overdrive, Audio source, Signal input, Smoothing, OSD language, Interpolation, Volume, Auto EcoView, Audio input (DisplayPort/HDMI)
Button Guide	✓
Signal inputs	DisplayPort, DVI-D, HDMI
Video Signal	DisplayPort, HDMI (YUV, RGB), DVI dual link (TMDS)
Input Signal Identification	✓
Audio Input	3.5 mm stereo jack, DisplayPort, HDMI
Audio Output	3.5 mm stereo jack
Built-in speakers	✓
USB hub	1 Up-/ 2 Down-Stream, Rev. 3.0

## Dimensions & Weights

Dimensions [ mm ]	610 x (390 bis 545) x 245 mm
Weight [ in kilograms ]	8
Dimensions Without Stand [ mm ]	611,4 x 356,3 x 50 mm
Weight Without Stand [ in kilograms ]	5
Swivel (right/left)	172 °
Incline forward/backward	5 ° / 35 °
Pivot	✓
Height Adjustment Range [ mm ]	155
Hole Spacing	VESA standard 100 x 100 mm

## Electric data

Power consumption (typical) [in watt]	22.00
Maximum Power Consumption [ in watt ]	67
Power Save Mode [ in watt ]	0.50
Power Consumption Off [ in watt ]	0
Energy-efficiency class	A
Annual Energy Consumption [ in kWh ]	39
Auto-EcoView	✓
EcoView-Index	✓
EcoView-Optimizer	✓
Power Supply	AC 100-120 V / 200-240 V, 50/60 Hz
Power Management	VESA DPMS, DVI-DPMS, DisplayPort Version 1.1a, Eco-Timer
Integrated power unit	✓

## Certification & Standards

Certification	CE, TÜV/GS, TÜV/Ergonomics, TCO 7, ISO 9241-307 Klasse 1 **, Energy Star
---------------	--

## Software & Accessories

Accompanying software and other accessories are available for download or on a CD	ScreenManager PRO, ScreenSlicer
Additional Supply	Power cord, Signal cable DisplayPort - DisplayPort, USB 3.0 cable, Quick guide, Manual on CD
Accessory	EIZO ScreenCleaner (for the best possible clean without scratching the monitor), HH200HS-K (HDMI (High Definition Multimedia Interface) cable to transfer digital video and audio signals.), PM200-K (DisplayPort cable to transfer digital video and audio signals.)

## Warranty

Warranty and service	5 years including on-site replacement service
----------------------	---

## Terms

\*\* ) Zero pixel error guarantee for completely lit sub-pixels (partial pixels ISO 9241-307). Valid: six months from the purchase date.