

Lenovo® recommends Windows.

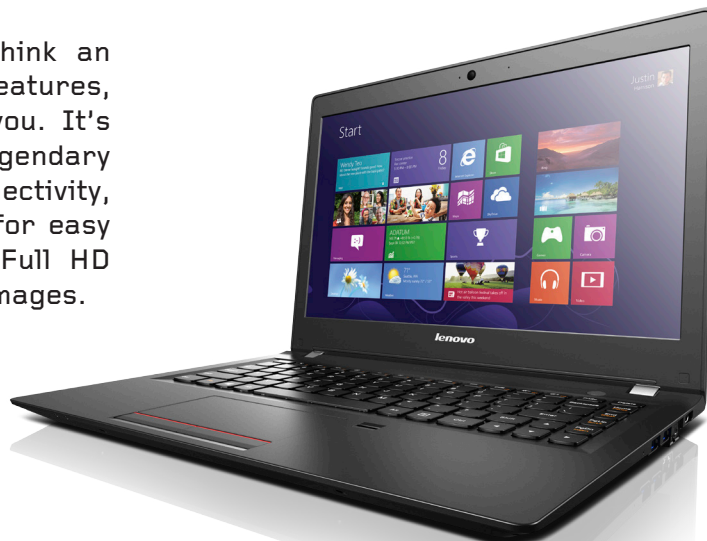
lenovo FOR
THOSE
WHO DO.

LENOVO® E31 NOTEBOOK PC

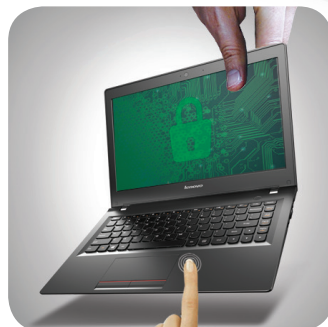
WORK OR LIFE BALANCE.

AN AFFORDABLE, PORTABLE NOTEBOOK FOR ALL YOU DO.

Built for work... ready for life. If you think an affordable notebook has to compromise on features, the thin, light Lenovo® E31 will surprise you. It's packed with an Intel® Core™ i processor, legendary Lenovo® AccuType® keyboard, extreme connectivity, security features and a 180-degree hinge for easy screen sharing. Choose the optional 13" Full HD display for the crispest text and most vivid images.



WHY BUY
THE LENOVO® E31
NOTEBOOK?



1 AFFORDABLE PERFORMANCE

Intel® Core™ i processors, versatile storage options and Lenovo's legendary AccuType® keyboard are ready for anything work or life throws at you ... but it's very easy on the budget.

2 BRILLIANT DISPLAY

Choose the optional 13" Full HD (1920 x 1080) anti-glare display that's perfect for everything from the crispest text to brilliant presentations to vibrant movies and realistic gaming.

3 GO ANYWHERE, DO ANYTHING

At just 1.59 kg light and 21.5 mm thin, it's the perfect travelling companion. Your data will always be protected with the help of a Kensington® lock and optional fingerprint reader.

4 FEATURES FOR SHARING

The sturdy metal hinge rotates a full 180-degrees for screen sharing. Data sharing is easy with connectivity including VGA & HDMI, two USB 3.0 ports and a 4-in-1 card reader.

WHO NEEDS
A LENOVO® E31
NOTEBOOK?

1 Anyone looking for an affordable notebook that's built for work, but is also perfect for leisure activities like movies and games.

2 Organizations and individuals who demand an affordable notebook that is highly secure.

3 Frequent travellers who need the convenience of a thin, light notebook with features for productivity.

4 Sales professionals who make frequent presentations, but also use their notebook at home for movies and games.

0800 123 1234

WWW.LENOVO.COM



SPECIFICATIONS

PERFORMANCE

Processor

Up to 5th Generation Intel® Core™ i7 Processor

Operating System

Windows 8.1

Graphics

Integrated Intel® HD Chipset

Memory

Up to 8 GB LPDDR3L

Webcam

720p HD

Storage

Up to 1TB HDD with 8GB Hybrid HDD
or up to 256GB SSD

Audio

Dolby®-certified stereo speakers

Battery¹

Up to 5 hours

DESIGN

Display

13.3" Up to FHD (1920 x 1080)

Dimensions (W x D x H)

12.72" x 0.85" x 9.06"
(323 mm x 21.5 mm x 230 mm)

Weight

1.59 kg (3.51 lbs)

Keyboard

AccuType® keyboard with individual rounded keys

CONNECTIVITY

Bluetooth®

WiFi 802.11 a/c, Bluetooth® 4.0

Connectors

2 x USB 3.0, VGA, HDMI, 4-in-1 card reader



1 Battery life (and recharge times) will vary based on many factors including system settings and usage. A description of the environment under which the test was performed is available upon request.

ACCESSORIES



ThinkPad® Optical
Wireless Mouse



ThinkPad® Essential
Line Carry Case



Kensington® MicroSaver
Security Cable Lock from Lenovo®



ThinkPad® Basic
USB 3.0 Dock

LENOVO SERVICES

**Warranty Extensions (1-to-3
Years Total Duration)**

This fixed-term, fixed-cost service helps accurately budget for PC expenses, protect your valuable investment and potentially lower the cost of ownership over time.

Accidental Damage Protection

Avoid the hassles of unexpected repair costs. Provides coverage for non-warranted damage incurred under normal

operating conditions, such as minor spills, drops or damage to the integrated screen.

Onsite / In-Home Service¹

Maximizes PC uptime and productivity by providing convenient, fast repair services in your own home.

1 Not available in all regions

Lenovo makes every effort to ensure accuracy of all information but is not liable or responsible for any editorial, photographic or typographic errors. All images are for illustrative purposes only. Lenovo product specifications: For full Lenovo product specifications visit www.lenovo.com. Lenovo makes no representations or warranties regarding third party products or services. **Trademarks:** The following are trademarks or registered trademarks of **Lenovo**: Lenovo, the Lenovo logo, IdeaPad, OneKey, VeriFace and New World. New Thinking. Microsoft, Windows and Vista are registered trademarks of Microsoft Corporation in the U.S. or other countries. Intel, the Intel Logo, Intel Inside, Pentium and Pentium Inside are trademarks or registered trademarks of Intel Corporation in the U.S. and/or other countries. Other company, product and service names may be trademarks or service marks of others. Battery life (and recharge times) will vary based on many factors including system settings and usage. A description of the environment under which the test was performed is available upon request. ©2015 Lenovo.

0800 123 1234

WWW.LENOVO.COM

