

# Always there to help you

Register your product and get support at  
[www.philips.com/welcome](http://www.philips.com/welcome)

AEA2000



# User Manual

# PHILIPS

# Contents

---

<b>1</b>	<b>Important</b>	<b>3</b>
----------	------------------	----------

---

<b>2</b>	<b>Your Bluetooth Adapter</b>	<b>3</b>
	Introduction	3
	What's in the box	3

---

<b>3</b>	<b>Play</b>	<b>4</b>
	Connect audio cables	4
	Connect power	4
	Enter pairing mode	4
	Play from Bluetooth-enabled devices	5

---

<b>4</b>	<b>Product information</b>	<b>6</b>
	Specifications	6

---

<b>5</b>	<b>Troubleshooting</b>	<b>6</b>
	About Bluetooth device	6

---

<b>6</b>	<b>Notice</b>	<b>7</b>
	Recycling	7

# 1 Important

- Read these instructions.
- Follow all instructions.
- Do not use this apparatus near water.
- Do not place near any heat sources such as radiators, heat registers, stoves, or other apparatus (including amplifiers) that produce heat.
- Protect the power cord from being walked on or pinched, particularly at plugs, convenience receptacles, and the point where they exit from the apparatus.
- Only use attachments/accessories specified by the manufacturer.
- Unplug this apparatus during lightning storms or when unused for long periods of time.
- Refer all servicing to qualified service personnel. Servicing is required when the apparatus has been damaged in any way, such as power-supply cord or plug is damaged, liquid has been spilled or objects have fallen into the apparatus, the apparatus has been exposed to rain or moisture, does not operate normally, or has been dropped.
- Apparatus shall not be exposed to dripping or splashing.
- Do not place any sources of danger on the apparatus (e.g. liquid filled objects, lighted candles).
- Where the plug of the Direct Plug-in Adapter is used as the disconnect device, the disconnect device shall remain readily operable.



## Warning

- Never remove the casing of this apparatus.
- Never place this apparatus on other electrical equipment.
- Ensure that you always have easy access to the power cord, plug or adaptor to disconnect the apparatus from the power.

# 2 Your Bluetooth Adapter

---

## Introduction

By connecting the Bluetooth adapter to your Hi-Fi speaker system, you can enjoy audio from your Bluetooth-enabled device on your Hi-Fi system through Bluetooth wireless connection.

---

## What's in the box

Check and identify the contents of your package:

- Main unit
- AC power adaptor
- RCA audio cable
- User manual

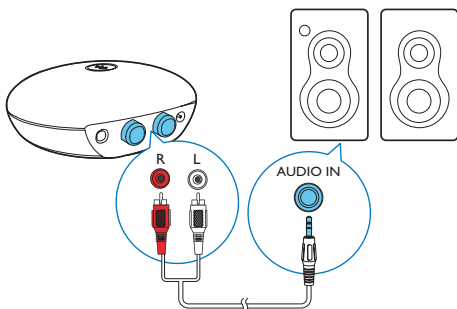
# 3 Play

Always follow the instructions in this chapter in sequence.

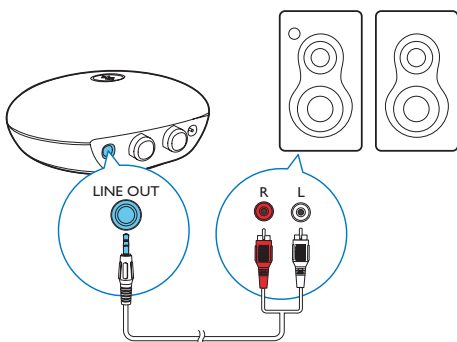
## Connect audio cables

There are two ways to connect the Bluetooth adaptor to your Hi-Fi system. Select one fit for the Hi-Fi system.

### Option 1 (Fig. A)



### Option 2 (Fig. B)



## Connect power



### Caution

- Risk of product damage! Make sure that the power supply voltage matches the voltage printed on the bottom of the unit.
- Risk of electric shock! Hold the plug securely when unplugging the device.

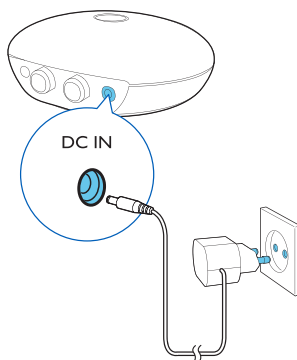


### Note

- The type plate is located on the bottom of the Bluetooth adaptor.

Connect the power adaptor to:

- the **DC IN** socket at the back of the Bluetooth adaptor.
- the wall outlet.



## Enter pairing mode

When connected to power, the Bluetooth adaptor goes to Bluetooth pairing mode automatically.

- If your Bluetooth device has not been paired with the Bluetooth adaptor before, you need pair with the Bluetooth adaptor first, then play audio on the device (See the section "Play from Bluetooth-enabled devices").

- If your Bluetooth device has been paired with the Bluetooth adapter before, press **⌘**.
- ↳ The Bluetooth adapter attempts to connect to the previously connected Bluetooth device. If it fails, the adapter returns to the pairing mode.



#### Tip

- If the Bluetooth adapter fails to pair with a Bluetooth device, the Bluetooth adapter exits the pairing mode in 2 minutes, and the LED light becomes dim. You can press **⌘** to return to pairing mode.

LED indications	Description
Solid blue	The Bluetooth adapter and your Bluetooth-enabled device are connected.
Flashing blue	The Bluetooth adapter is waiting to be paired with a Bluetooth-enabled device.
Dim light	The Bluetooth adapter is neither in connection with a Bluetooth device nor in the pairing mode.

## Play from Bluetooth-enabled devices



#### Note

- The effective operating range between the Bluetooth adapter and the paired device is approximately 10 meters (30 feet).
- Keep this Bluetooth adapter away from other electronic devices that may cause interference.
- Compatibility with all Bluetooth devices is not guaranteed.
- Make sure that the Bluetooth adapter is connected to the powered Hi-Fi system correctly.
- Make sure that your Hi-Fi system is in Audio-in or line-in mode.

- 1 On your Bluetooth device, turn on Bluetooth function and search for Bluetooth devices (refer to the device's user manual).

- 2 When **[PhilipsBT]** (Philips Bluetooth adapter) is displayed on your device, select it to start pairing and connection. If necessary, enter default password "0000".
  - ↳ If connection is successful, the Bluetooth indicator becomes solid blue.

- 3 Play audio on your device.
  - ↳ Audio streams from your device to your Hi-Fi system.



#### Note

- If your Bluetooth device has been paired with AEA2000 before, you just need to find out **[PhilipsBT]** on your Bluetooth menu, then start the connection.
- This Bluetooth adaptor can memorize up to 8 previously paired devices.

#### To disconnect the Bluetooth-enabled device:

- Press **⌘** again;
- Tap **[PhilipsBT]** on the Bluetooth menu again;
- Deactivate Bluetooth function on your device; or
- Move the device beyond the communication range.

#### To connect another Bluetooth device:

- 1 Disconnect the previously connected device.
- 2 Pair with your selected Bluetooth device.

#### To clear pairing history in the Bluetooth adapter:

Press and hold **⌘** for 7 seconds.

- ↳ The Bluetooth indicator stays in solid blue for 2 seconds, then returns to the previous status.

# 4 Product information

## Note

- Product information is subject to change without prior notice.

## Specifications

### Amplifier

Output Voltage	1000 mV RMS
Signal to Noise Ratio	> 62 dBA
Total Harmonic Distortion	< 2 %

### Bluetooth

Standard	Bluetooth Standard Version 2.1+EDR
Frequency Band	2.402~2.480 GHzISM Band
Range	10m (free space)

### General information

AC Power	Model: AS030-090-EE033/EML0900330V (Philips); Input: 100-240 V ~, 50/60 Hz, 0.15 A; Output: 9 V === 0.33 A
Operation Power Consumption	< 3 W
Dimensions - Main Unit (W x H x D)	74 x 28 x 72 mm
Weight - Main Unit	0.04 kg

# 5 Troubleshooting



## Warning

- Never remove the casing of this device.

To keep the warranty valid, never try to repair the system yourself.

If you encounter problems when using this device, check the following points before requesting service. If the problem remains unsolved, go to the Philips Web page ([www.philips.com/support](http://www.philips.com/support)). When you contact Philips, make sure that the device is nearby and the model number and serial number are available.

### No power

- Make sure that the AC power adapter is connected properly.
- Make sure that there is power at the AC outlet.

### No sound from your Hi-Fi system

- Check if the Hi-Fi system is connected to power.
- Make sure that the system is connected with the Bluetooth adapter properly.
- Make sure that the Bluetooth wireless connection is successful.
- Adjust the volume of your system and Bluetooth device.
- Make sure that the Hi-Fi system is in Audio-in or line-in mode.

## About Bluetooth device

### The audio quality is poor after connection with a Bluetooth-enabled device.

- The Bluetooth reception is poor. Move the device closer to the Bluetooth adaptor or remove any obstacle between the device and the adaptor.

### Cannot connect with the device.

- The Bluetooth function of the device is not enabled. Refer to the user manual of the device for how to enable the function.
- The adapter is already connected with another Bluetooth-enabled device. Disconnect that device and then try again.

### The paired device connects and disconnects constantly.

- The Bluetooth reception is poor. Move the device closer to the Bluetooth adapter or remove any obstacle between the device and the adapter.
- For some devices, the Bluetooth connection may be deactivated automatically as a power-saving feature. This does not indicate any malfunction of the system.

## 6 Notice

Any changes or modifications made to this device that are not expressly approved by WOOX Innovations may void the user's authority to operate the equipment.

# C € 2150

This product complies with the radio interference requirements of the European Community.

A copy of the EC declaration of Conformity is available in the Portable Document Format (PDF) version of the user manual at [www.philips.com/support](http://www.philips.com/support).

---

## Recycling



Your product is designed and manufactured with high quality materials and components, which can be recycled and reused. When you see the crossed-out wheel bin symbol attached to a product, it means the product is covered by the European Directive 2002/96/EC:



Never dispose of your product with other household waste. Please inform yourself about the local rules on the separate collection of electrical and electronic products. The correct disposal of your old product helps prevent potentially negative consequences on the environment and human health.

## Environmental information

All unnecessary packaging has been omitted. We have tried to make the packaging easy to separate into three materials: cardboard (box), polystyrene foam (buffer) and polyethylene (bags, protective foam sheet.)

Your system consists of materials which can be recycled and reused if disassembled by a specialized company. Please observe the local regulations regarding the disposal of packaging materials, exhausted batteries and old equipment.

The Bluetooth® word mark and logos are registered trademarks owned by Bluetooth SIG, Inc. and any use of such marks by WOOX Innovations is under license.

2013 © WOOX Innovations Limited. All rights reserved.

Specifications are subject to change without notice. WOOX reserves the right to change products at any time without being obliged to adjust earlier supplies accordingly.





Specifications are subject to change without notice.  
2013 © WOOX Innovations Limited. All rights reserved.  
This product was brought to the market by WOOX Innovations Limited or one of its affiliates, further referred to in this document as WOOX Innovations, and is the manufacturer of the product. WOOX Innovations is the warrantor in relation to the product with which this booklet was packaged. Philips and the Philips Shield Emblem are registered trademarks of Koninklijke Philips N.V.

