

Lenovo® recommends Windows.

lenovo FOR
THOSE WHO DO.™

LENOVO® E50-00 DESKTOP

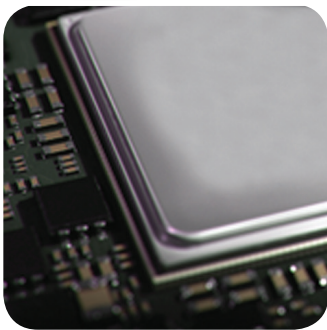
STYLISH. AFFORDABLE. RELIABLE.

A COST-SAVING DESKTOP WITH QUAD-CORE PERFORMANCE.

Performance without compromise and without the high cost. The stylish, reliable and affordable Lenovo® E50-00 desktop combines Pentium® Quad-Core performance and discrete graphics with an external power adaptor and power management system that lets you choose the best balance between system performance and power-efficiency.



WHY BUY THE
LENOVO® E50-00?



1 RELIABLE PERFORMANCE

Don't let the affordable price fool you. Lenovo® E50-00 delivers powerful Pentium® Quad-Core performance, ultra-fast USB 3.0 data transfer, discrete graphics and a Power Manager that provides real cost-efficiency.

2 EXCEPTIONAL VALUE

The affordable Lenovo® E50-00 continues to deliver cost savings with a 90 / 65W external adaptor that provides a 35% power saving*, along with a Power Manager for even more efficiencies.

3 STYLISH, INTELLIGENT DESIGN

A sleek, stylish, purpose-built chassis, plus hidden air inlets to prevent overheating and a front I/O with smart card reader (optional), are just some features of this intelligent design.

4 DESKTOP MOBILITY

Another intelligent design element of the Lenovo® E50-00 is its convenient integrated handle, ideal for convenient mobility.

WHO NEEDS THE
LENOVO® E50-00?

1 Organizations requiring an affordable desktop that doesn't compromise on performance.

2 SMBs and larger enterprises that want control over the balance between performance and cost-efficiency.

3 SMBs and other organizations that place a premium on ergonomics.

* Compared with traditional internal power supply units.

Lenovo® recommends Windows.



SPECIFICATIONS

PERFORMANCE

Processor

Intel® Pentium® J2900
 Intel® Celeron® J1900
 Intel® Celeron® J1800

Operating System

Windows 8.1
 Windows 8.1 Pro
 Windows 8.1 downgrade to
 Windows 7 Professional 64 bit
 Windows 7 Professional 64 bit
 Windows 7 Home Basic
 DOS

Graphics

Intel® Integrated

Discrete graphics

R5 235 512M / R5 235 1G

Memory

1 x SO-DIMM (2G / 4G / 8G DDR3)
 Maximum 8GB up to 1600 MHz

Storage

3.5" HDD (500GB / 1TB)

Audio

Realtek ALC662-VD

Certification

CB / CE

DESIGN

Dimensions (W x D x H)

6.23" x 16.77" x 15.22"
 (160 mm x 425.88 mm x 386.50 mm)

Weight

9.58 kg (21.12 lbs)

OD

DVD / DVD-RW

PSU

65W external adapter
 90W external adapter

Physical Security

Kensington® Slot

External Drive Bay

1 x 5.25"

Internal Bay

1 x 3.5"

Expansion slot

1 x PCI-e x 16, Full Height (One x 4 link)
 1 x PCI-e x 1, Full Height

PRELOADED SOFTWARE

Productivity

Lenovo® Companion
 AccuWeather
 Adobe Reader
 Evernote®
 Skype™
 Microsoft Office 2013
 Internet Explorer 11

Reliability

Lenovo® Rescue System
 Lenovo® Solution Center
 McAfee® Antivirus
 Lenovo® support

Green

Desktop Power Manager



ACCESSORIES



Lenovo® UltraSlim
 Wireless Keyboard
 and Mouse Combo



ThinkPad® In-Ear
 Headphones



Cables
 Lenovo® DisplayPort to DisplayPort and
 Lenovo® DisplayPort to Dual-DisplayPort

LENOVO SERVICES

Warranty Upgrades – Onsite Service*

Maximizes PC uptime and productivity by providing convenient, fast repair services in your own home.

* Not available in all countries

Warranty Extensions (1-to-3 Years Total Duration)

This fixed-term, fixed-cost service helps accurately budget for PC expenses, protect your valuable investment and potentially lower the cost of ownership over time.

RECOMMENDED SERVICE - 3YR Mail-in/CCI

5WS0F82910 - Belgium, France, Ireland, Israel, Italy, Netherlands, Portugal, Switzerland and UK

5WS0F82911 - Germany

5WS0F82913 - Austria, Denmark, Finland, Norway, Spain, Sweden

Lenovo makes every effort to ensure accuracy of all information but is not liable or responsible for any editorial, photographic or typographic errors. All images are for illustrative purposes only. Lenovo product specifications: For full Lenovo product specifications visit www.lenovo.com Lenovo makes no representations or warranties regarding third party products or services. **Trademarks:** The following are trademarks or registered trademarks of **Lenovo:** Lenovo, the Lenovo logo, IdeaPad, OneKey, VeriFace and New World. New Thinking. Microsoft, Windows and Vista are registered trademarks of Microsoft Corporation in the U.S. or other countries. Intel, the Intel Logo, Intel Inside, Pentium and Pentium Inside are trademarks or registered trademarks of Intel Corporation in the U.S. and/or other countries. Other company, product and service names may be trademarks or service marks of others. Battery life (and recharge times) will vary based on many factors including system settings and usage. A description of the environment under which the test was performed is available upon request. ©2014 Lenovo.

