

# HP ProDesk 400 G1 Microtower PC



Maximize your investment. Keep growing your business, not your expenses. The HP ProDesk 400 G1 Series offers expandable desktop PC options that meet your everyday business needs with enough room to grow. Watch your business flourish while reducing the total cost of ownership—now that's a smart investment.



## HP recommends Windows.

### Customized convenience

Customize a PC configuration that's the perfect fit for your business and take advantage of a 12-month product lifecycle.

Look smart and work smarter, thanks to a stylish design offering increased flexibility for a variety of hardware configurations. It's the perfect way to meet your needs—and your budget.

Cruise through tasks easily and efficiently with the latest processor technology. The Intel® Core™ 4th Gen processor<sup>1</sup> boasts a powerful chipset, processor support and robust memory.

Be confident at the helm with help from programs like HP Support Assistant<sup>2</sup> that make deployment and management a breeze.

Coast through your task list thanks to Windows 8.1<sup>3</sup> and HP. Enjoy a superior user experience that includes intuitive and simple software applications like HP PageLift.<sup>4</sup>

### More expansion, less expense

Experience high growth at a low cost of ownership with options for easy expansion and upgrades.

Don't limit your business. Choose from microtower or small form factor with optional bundled displays that can be upgraded and expanded as your needs change.

Here's a PC you can rely on. Enjoy a business-class platform and 12-month lifecycle plus the assurance of 115,000 hours of reliability testing.

Easily share your internet connection with up to five devices with HP Wireless Hotspot.<sup>5</sup> Help colleagues get online and improve productivity.

Help decrease your environmental impact when you use an EPEAT® Gold<sup>6</sup> registered PC.

### Solid security

Protect data, devices and identities with HP Client Security<sup>7</sup> which now includes HP Trust Circles<sup>8</sup> to make sure only approved contacts can access the files.

Stay up and running. HP BIOS Protection<sup>9</sup> offers enhanced protection against virus attacks to the BIOS and other security threats, and is designed to help prevent data loss and reduce downtime.

Keep sensitive information in safe hands. HP Trust Circles<sup>8</sup> protects your data by ensuring that only approved contacts can access critical files.

Rest easy and work confidently with dependable support options including a parts/labor/on-site warranty and parts availability for up to three years.

# HP ProDesk 400 G1 Microtower PC

HP recommends Windows.



<b>Form Factor</b>	Microtower
<b>Operating System</b>	Windows 8.1 Pro 64 <sup>1</sup> Windows 8.1 64 <sup>1</sup> Windows 7 Professional 64 (available through downgrade rights from Windows 8.1 Pro) <sup>2</sup> FreeDOS
<b>Display</b>	HP W1972a 47 cm (18.5") WLED Monitor; W2072a LED DVI+VGA w/ Speakers Monitor
<b>Processor Family</b>	Intel® Core™ i7 processor; Intel® Core™ i5 processor; Intel® Core™ i3 processor; Intel® Pentium® processor <sup>3</sup>
<b>Processor</b>	Intel® Core™ i3-4130 with Intel HD Graphics 4400 (3.4 GHz, 3 MB cache, 2 cores); Intel® Core™ i5-4570 with Intel HD Graphics 4600 (3.2 GHz, 6 MB cache, 4 cores); Intel® Core™ i5-4670 with Intel HD Graphics 4600 (3.4 GHz, 6 MB cache, 4 cores); Intel® Core™ i7-4770 with Intel HD Graphics 4600 (3.4 GHz, 8 MB cache, 4 cores); Intel® Pentium® G3220 with Intel HD Graphics (3 GHz, 3 MB cache, 2 cores)
<b>Chipset</b>	Intel® H81 Express
<b>Memory</b>	Up to 16 GB 1600 MHz DDR3 SDRAM <sup>9</sup> Memory slots: 2 DIMM
<b>Storage</b>	Internal drive bays One 8,9 cm (3.5") External drive bays 500 GB, up to 2 TB, SATA (7200 rpm) <sup>4</sup> 500 GB, up to 1 TB, SATA SSHD <sup>4</sup> up to 128 GB, SATA SSD <sup>4</sup> up to 256 GB, SATA SE SSD <sup>4</sup>
<b>Removable Media</b>	SATA Blu-ray BDXL writer; SATA SuperMulti DVD writer; SATA DVD-ROM <sup>5,6,16</sup>
<b>Graphics</b>	Integrated: Intel HD Graphics Basic, 4400 or 4600; Optional Discrete: AMD Radeon HD 8350 (1GB) PCIe x16; AMD Radeon HD 8490 (1GB) PCIe x16; NVIDIA GeForce GT 630 (2 GB) FH PCIe x16 <sup>10,17</sup> Integrated graphics will depend on processor
<b>Audio</b>	Standard: DTS Studio Sound™; Realtek ALC 221 Audio (all ports stereo); Microphone and headphone jacks; Stereo audio line out and integrated speaker
<b>Communications</b>	Integrated Realtek RTL8151GH-CG GbE LOM Network Connection; Intel® Dual Band Wireless-N 7260 802.11 a/b/g/n PCI Express (optional) <sup>13</sup> Intel® Dual Band Wireless-N 7260 planned to be available December, 2013.
<b>Expansion Slots</b>	3 full-height PCIe (x1); 1 full-height PCIe x16; 1 media card reader
<b>Ports and Connectors</b>	2 USB 3.0; 6 USB 2.0; 2 PS/2; 1 VGA; 1 DVI-D; 1 microphone/headphone jack; 1 audio line in/out; 1 RJ-45; 1 serial; 1 serial (optional); 1 parallel (optional) <sup>7</sup> 2 internal USB 2.0 headers for media card reader
<b>Input Device</b>	HP PS/2 Keyboard; HP USB Keyboard; USB Smart Card (CCID) Keyboard <sup>16</sup> HP Wireless Keyboard and Mouse Combo; HP PS/2 Mouse; HP USB Mouse
<b>Security</b>	SATA port disablement (via BIOS); RAID Configuration; Serial, parallel, USB enable/disable (via BIOS); Optional USB Port Disable at factory (user configurable via BIOS); Removable media write/boot control; Power-On password (via BIOS); Administrator password (via BIOS); HP Chassis 1 bay security kit
<b>Software</b>	HP Client Security (incl. Cred Mgr and Passwrd Mgr); HP Trust Circles Standard; HP Wireless HotSpot (Win 8.1); HP PageLift; HP Recovery Manager; HP Support Assistant; HP ePrint; CyberLink Power2Go; CyberLink Power2Go (Secure Burn); Buy Office <sup>8,11,12</sup>
<b>Dimensions</b>	18.28 x 40.2 x 35.7 cm Without stand
<b>Weight</b>	Starting at 7.14 kg Weight will vary by configuration.
<b>Operating Humidity Range</b>	10 to 90% RH
<b>Operating Temperature Range</b>	10 to 35°C
<b>Energy Efficiency Compliance</b>	ENERGY STAR® qualified configurations available Low halogen
<b>Power</b>	Internal 300W Power Supply, Active PFC, high efficiency energy saving power supply options available <sup>16</sup>
<b>Warranty</b>	1-year limited warranty including 1 years of parts, labour, and next-business-day onsite service. Terms and conditions vary by country. Certain restrictions and exclusions apply.

Accessories and services (not included)

---

HP 4-GB PC3-12800  
(DDR3-1600 MHz) DIMM  
Memory



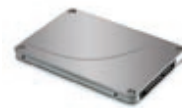
Maximize your business PC performance with HP Memory. Upgrading your memory is a cost-effective way to boost your system performance without having to upgrade your processor.  
**Product number: B4U36AA**

NVIDIA NVS 315 1GB  
Graphics Card



Get efficient dual-display graphics performance in a PCI Express low-profile graphics card with the NVIDIA NVS 315 PCIe x16 1 GB Graphics Card, an ideal desktop graphics solution for professional business and commercial applications.  
**Product number: E1C65AA**

HP 128 GB SATA 6 Solid  
State Drive



Boost the performance and robustness of your HP Business Desktop PC with an HP Solid State Drive. The HP Solid State Drives are a drop-in replacement for the 2.5-inch or 3.5-inch (with bracket) hard disk drive of some HP Compaq Business Desktop PCs providing many performance and durability improvements over traditional Hard Disk Drive (HDD) technology.  
**Product number: QV063AA**

HP USB Keyboard



The new HP USB Keyboard features an impressively durable design built for ease of use and everyday business computing.  
**Product number: QY776AA**

HP USB Optical Scroll Mouse



Utilizing the latest optical sensing technology, the HP USB Optical Scroll Mouse records precise motion over a variety of surfaces without a mouse pad.  
**Product number: QY777AA**

3-year Next Business Day  
Onsite



Receive 3 years of next business day onsite repair from an HP-qualified technician for your computing device, if the issue cannot be solved remotely  
**Product number: U6578E**

Learn more at  
[www.hp.eu/hpoptions](http://www.hp.eu/hpoptions)

### Footnotes

<sup>1</sup> Multi-Core is designed to improve performance of certain software products. Not all customers or software applications will necessarily benefit from use of this technology. 64-bit computing on Intel® architecture requires a computer system with a processor, chipset, BIOS, operating system, device drivers, and applications enabled for Intel® 64 architecture. Processors will not operate (including 32-bit operation) without an Intel® 64 architecture-enabled BIOS. Performance will vary depending on your hardware and software configurations. Intel's numbering is not a measurement of higher performance.; <sup>2</sup> HP Support Assistant requires Windows 7 or later edition and internet access.; <sup>3</sup> Not all features are available in all editions of Windows 8.1. Systems may require upgraded and/or separately purchased hardware, drivers and/or software to take full advantage of Windows 8.1 functionality. See <http://www.microsoft.com>.; <sup>4</sup> HP PageLift requires Windows 7 or higher edition.; <sup>5</sup> The wireless hotspot application requires an active internet connection and separately purchased data plan. While HP wireless hotspot is active, on-device applications will continue to work and will use the same data plan as the wireless hotspot. Wireless hotspot data usage may incur additional charges. Check with your service provider for plan details. Requires Windows 8.1 or HP Connection Manager for Windows 7.; <sup>6</sup> EPEAT registration varies by country. See [www.epeat.net](http://www.epeat.net) for registration status by country.; <sup>7</sup> HP Client Security requires Windows. Planned support for Windows 8.1 expected to ship with products beginning in December 2013.; <sup>8</sup> HP Trust Circles Standard, when included, allows up to 5 Trust Circles with up to 5 contacts in each Trust Circle. Optional Trust Circles Professional required for unrestricted number of Trust Circles and members contacts. Trust Circles Reader is available to allow a contact to participate in an invited Trust Circle. Requires Windows.; <sup>9</sup> HP Tools partition with HP BIOS required for automatic recovery.

### Technical specifications disclaimers

<sup>1</sup> Not all features are available in all editions of Windows 8 and Windows 8.1. Systems may require upgraded and/or separately purchased hardware, drivers and/or software to take full advantage of Windows 8 and Windows 8.1 functionality. See <http://www.microsoft.com>.; <sup>2</sup> This system is preinstalled with Windows 7 Pro software and also comes with a license and media for Windows 8 Pro software. You may only use one version of the Windows software at a time. Switching between versions will require you to uninstall one version and install the other version. You must back up all data (files, photos, etc.) before uninstalling and installing operating systems to avoid loss of your data. Optional accessories sold separately.; <sup>3</sup> Multi-Core is designed to improve performance of certain software products. Not all customers or software applications will necessarily benefit from use of this technology. 64-bit computing on Intel® architecture requires a computer system with a processor, chipset, BIOS, operating system, device drivers, and applications enabled for Intel® 64 architecture. Processors will not operate (including 32-bit operation) without an Intel® 64 architecture-enabled BIOS. Performance will vary depending on your hardware and software configurations. Intel's numbering is not a measurement of higher performance.; <sup>4</sup> For hard drives, GB = 1 billion bytes. TB = 1 trillion bytes. Actual formatted capacity is less. Up to 16GB (for Windows 7) and up to 36GB (for Windows 8) of system disk is reserved for system recovery software.; <sup>5</sup> Duplication of copyrighted material is strictly prohibited. Actual speeds may vary. Double Layer media compatibility will widely vary with some home DVD players and DVD-ROM drives. Note that DVD-RAM cannot read or write to 2.6GB Single Sided/5.2 Double Sided-Version 1.0 Media.; <sup>6</sup> With Blu-Ray drive XL, certain disc, digital connection, compatibility and performance issues may arise, and do not constitute defects in the product. Flawless playback on all systems is not guaranteed. In order for some Blu-ray titles to play, they may require an HDCP path and HDCP display. HD-DVD movies cannot be played on this BDXL Drive.; <sup>7</sup> Support for external displays as a standard feature through integrated processor-based graphics is dependent upon the particular PC platform/form factor; the actual number of displays supported will vary. An optional discrete graphics solution will be required for the support of additional displays. Additional cables required.; <sup>8</sup> ePrint requires an Internet connection to HP web-enabled printer and HP ePrint account registration (for a list of eligible printers, supported documents and image types and other HP ePrint details, see [www.hp.com/go/eprintcenter](http://www.hp.com/go/eprintcenter)). Print times and connection speeds may vary.; <sup>9</sup> Maximum memory capacities assume Windows 64-bit operating systems or Linux. With Windows 32-bit operating systems, memory above 3 GB may not all be available due to system resource requirements.; <sup>10</sup> HD content required to view HD images.; <sup>11</sup> HP Support Assistant requires Windows 7 or later edition and internet access.; <sup>12</sup> HP PageLift requires Windows 7 or higher edition.; <sup>13</sup> Intel Dual Band Wireless is an optional or add-on feature and requires separately purchased wireless access point and internet service. Availability of public wireless access points limited.; <sup>14</sup> Secure Erase is for the methods outlined in the National Institute of Standards and Technology Special Publication 800-88.; <sup>15</sup> Low halogen: External power supplies, power cords, cables and peripherals are not Low Halogen. Service parts obtained after purchase may not be Low Halogen.; <sup>16</sup> Optional add-on feature.; <sup>17</sup> Integrated Intel HD graphics uses part of the total system memory for video performance. System memory dedicated to video performance is not available for other use by other programs.

### Learn more at

[www.hp.eu/desktops](http://www.hp.eu/desktops)

### Get engaged with HP Financial Services

Get engaged with HP Financial Services to implement innovative technologies essential for driving business value and competitive differentiation. More information on

[www.hp.com/go/hpfs](http://www.hp.com/go/hpfs).

### Sign up for updates

[www.hp.com/go/getupdated](http://www.hp.com/go/getupdated)

The product could differ from the images shown. © 2013 Hewlett-Packard Development Company, L.P. The information contained herein is subject to change without notice. The only warranties for HP products and services are set forth in the express warranty statements accompanying such products and services. Nothing herein should be construed as constituting an additional warranty. HP shall not be liable for technical or editorial errors or omissions contained herein. Not all features are available in all editions of Windows 8. Systems may require upgraded and/or separately purchased hardware to take full advantage of Windows 8 functionality. See <http://www.microsoft.com/windows> for details. Bluetooth is a trademark of its proprietor and used by Hewlett-Packard Company under license. Intel and Core are trademarks or registered trademarks of Intel Corporation or its subsidiaries in the U.S. and other countries. All other trademarks are the property of their respective owners.

