

## Product Highlights

### Gigabit Ethernet Speed

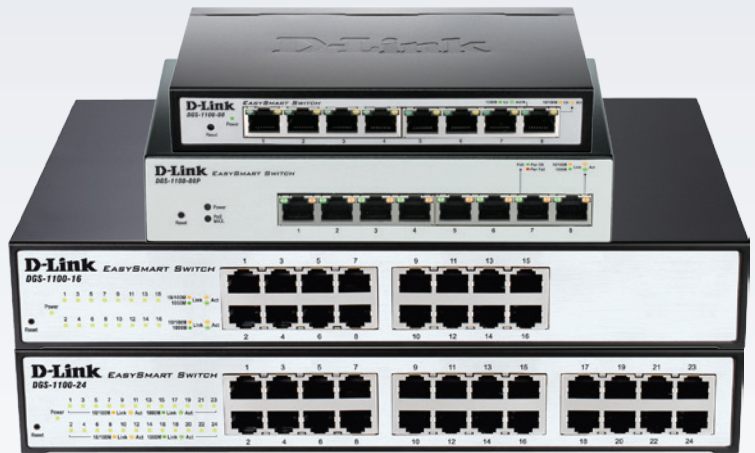
High-speed ports provide the latest Ethernet technology while remaining backward compatible for connections to older computers and equipment

### Revolutionary Energy Efficiency

Innovative D-Link Green features help conserve energy without affecting performance so you can reduce operating costs and protect the environment

### Smart and Flexible Management

Powerful switch management functions can be performed through a web management interface or through the SmartConsole Utility



## DGS-1100 Series

# EasySmart Switches

## Features

### Physical

- 8, 16, or 24 Gigabit Ethernet ports
- Optional 802.3af PoE support
- Fanless design for silent operation

### D-Link Green Technology

- Power Saving by Link Status
- Power Saving by Cable Length
- IEEE 802.3az compliant

### Advanced Features

- IGMP Snooping
- Bandwidth Control
- Static MAC

### VLAN Features

- 802.1Q VLAN for traffic segregation
- Port-based VLAN

### Quality of Service

- 802.1p
- Surveillance VLAN
- Voice VLAN

### Easy Troubleshooting

- Loopback Detection with auto disable
- Cable Diagnostics

### Management Features

- Web-based GUI
- SmartConsole Utility

D-Link's DGS-1100 Series EasySmart Switches provide an affordable solution for SOHOs and Small and Medium Businesses as well as enterprise deployment, such as in branch offices and meeting rooms that require simple network management. Each model comes in a compact desktop-sized metal case and features either 8, 16, or 24 Gigabit port. The DGS-1100 Series also includes a 8-port PoE switch that support 802.3af PoE with power budget of 64W.

## D-Link Green/Power Saving Performance

Compliant with IEEE802.3az Energy Efficient Ethernet, these switches consume less energy by cutting down on power consumption when port utilisation is low. By deploying IEEE devices, users can cut operating costs and even cut down on necessary cooling equipment, helping small and medium-sized businesses stay within their budgets. The DGS-1100 Series also features D-Link Green Technology that helps automatically save energy. The switches automatically detect the length of the connected cables and can adjust power usage for cables shorter than 20 meters. In addition, the switches monitor the link status of every port and will drastically reduce power consumption when a port link is down.

## Easy to deploy

The DGS-1100 Series EasySmart Switches support an intuitive SmartConsole Utility and a web-based management interface. The SmartConsole Utility allows customers to discover all switches in the D-Link Smart Switch family within the same L2 network segment. With this utility, users do not need to change the IP address of their PC, and this also makes initial setup of the Smart Switches quick and easy. Switches within the same L2 network segment that are connected to the user's PC are displayed on-screen for instant access. This allows for extensive switch configuration and basic setup of discovered devices, including password changes and firmware upgrades. The graphic web-based management interface provides a user-friendly interface that enables network administrators to remotely control their network down to the port level.

## Surveillance VLAN and Bandwidth Control

The DGS-1100 Series supports Surveillance VLAN for video surveillance deployment. Surveillance VLAN gives video traffic high priority and an individual VLAN, guaranteeing the quality of surveillance traffic through a single DGS-1100 switch, thus sparing businesses the added expenses required for dedicated hardware and facilities. Bandwidth Control can reserve bandwidth on a per port basis for important functions that require larger bandwidth or might have high priority.

## PoE Support

The DGS-1100-08P delivers Power over Ethernet (PoE) capabilities, making deployment with IP cameras, VoIP phones, and access points much easier. Power cords will become a thing of the past, as the DGS-1100-08P complies with the 802.3af standard for PoE and supports a 64 Watt power budget. The 10/100/1000Base-T Ethernet ports mean that even high-quality video is no problem.

## Easy Troubleshooting

These EasySmart Switches feature Loopback Detection and Cable Diagnostics to help network administrators find and solve network problems quickly and easily. Loopback Detection is used to detect loops created by a specific port and automatically shut down the affected port. The Cable Diagnostics feature is designed for network administrators to quickly examine the quality of the copper cables, recognise the cable type, and detect cable errors.

## Advanced Features

DGS-1100 Series is equipped with advanced security features such as Static MAC, Storm Control, and IGMP Snooping. Static MAC allows users to create a MAC whitelist for specific ports, helping administrators limit network access to authorised devices only. Storm Control monitors broadcast, multicast, or unknown unicast traffic and will start blocking or discarding packets which could flood the network when the defined threshold is exceeded. IGMP Snooping is able to reduce the loading of L3 multicast routers and save bandwidth in network throughput.



If the worst should happen to your network you need the very best support and fast. Downtime costs your business money. D-Link Assist maximises your uptime by solving technical problems quickly and effectively. Our highly trained technicians are on standby around the clock, ensuring that award-winning support is only a phone call away.

With a choice of three affordable service offerings covering all D-Link business products, you can select the package that suits you best:

### D-Link Assist Gold - for comprehensive 24-hour support

D-Link Assist Gold is perfect for mission-critical environments where maximum uptime is a high priority. It guarantees four hour around-the-clock response. Cover applies 24/7 for every day of the year including holidays.

### D-Link Assist Silver - for prompt same-day assistance

D-Link Assist Silver is designed for 'high availability' businesses that require rapid response within regular working hours. It provides a four hour response service Monday to Friday from 8am to 5pm, excluding holidays.

### D-Link Assist Bronze - for guaranteed response on the next business day

D-Link Assist Bronze is a highly cost-effective support solution for less critical environments. Response is guaranteed within eight business hours Monday to Friday from 8am to 5pm, excluding holidays.

D-Link Assist can be purchased together with any D-Link business product. So whether you're buying switching, wireless, storage, security or IP Surveillance equipment from D-Link, your peace of mind is guaranteed. D-Link Assist also offers installation and configuration services to get your new hardware working quickly and correctly.



DGS-1100-08



DGS-1100-08P



DGS-1100-16



DGS-1100-24

Technical Specifications				
General	DGS-1100-08	DGS-1100-08P	DGS-1100-16	DGS-1100-24
Size	Desktop	Desktop	11-inch Desktop/Rackmount Size, 1U Height	
Number of Ports	8 10/100/1000 Gigabit ports	8 10/100/1000 PoE Gigabit ports	16 10/100/1000 Gigabit ports	24 10/100/1000 Gigabit ports
Port Functions	IEEE 802.3 compliant IEEE 802.3u compliant Supports half/full-duplex operation (half at 10/100 Mbps, full at 1000 Mbps) Auto-negotiation Auto MDI/MDIX IEEE 802.3x Flow Control supports Full-Duplex mode IEEE 802.3az compliant			
Performance				
Switching Capacity	16 Gbps		32 Gbps	48 Gbps
Maximum Forwarding Rate	11.9 Mpps		23.81 Mpps	35.71 Mpps
MAC Address Table Size	8K Entries			
Packet Buffer	2 Mbits		3.5 Mbits	
Flash Memory	2 MB			
PoE				
PoE Standard	N/A	802.3af	N/A	N/A
PoE Capable Ports	N/A	<ul style="list-style-type: none"> <li>• Port 1 to 8: 15.4 W</li> <li>• Max. 15.4 W on 4 10/100/1000 Mbps ports</li> <li>• Max. 8 W on 8 10/100/1000 Mbps ports</li> </ul>	N/A	N/A
PoE Power Budget	N/A	64 W	N/A	N/A
LEDs				
Power (per device)	✓	✓	✓	✓
PoE Max.	N/A	✓	N/A	N/A
Link/Activity/Speed (per port)	✓	✓	✓	✓
Power Consumption				
Standby Mode	1.23 watts	2.0 watts	5.64 watts	6.49 watts
Maximum	4.89 watts	78.8 watts (PoE on) 5.2 watts (PoE off)	11.29 watts	14.83 watts
Physical				
Power Input	100 to 240 V AC 50 to 60 Hz External Power Adapter		100 to 240 V AC 50 to 60 Hz Internal Universal Power Supply	
MTBF	503,585 hours	708,219 hours	988,205 hours	774,990 hours
Acoustics	0 dB			
Heat Dissipation	16.68 BTU/hr	268.87 BTU/hr	38.52 BTU/hr	50.60 BTU/hr
Weight	0.42 kg (0.925 pounds)	0.706 kg (1.553 pounds)	1.5 kg (3.3 pounds)	1.6 kg (3.5 pounds)
Dimensions	171 x 98 x 28 mm (6.7 x 3.85 x 1.1 inches)	190 x 120 x 38 mm (7.4 x 4.7 x 1.1 inches)	280 x 180 x 44 mm (11 x 7.1 x 1.73 inches)	
Ventilation	Fanless			

# DGS-1100 Series EasySmart Switches

Operating Temperature	0 to 40 °C (32 to 104 °F)
Storage Temperature	-10 to 70 °C (14 to 158 °F)
Operating Humidity	10% to 95% non-condensing
Storage Humidity	5% to 95% non-condensing
EMI	FCC Class A, CE Class A, VCCI Class A, ICES-003, C-Tick
Safety	cUL, CE LVD

## Software Features

VLAN	<ul style="list-style-type: none"> <li>• Port-based VLAN</li> <li>• 802.1Q Tagged VLAN</li> <li>• Surveillance VLAN</li> <li>• Voice VLAN</li> <li>• Management VLAN</li> </ul>	<ul style="list-style-type: none"> <li>• VLAN Group</li> <li>• Supports 32 static VLAN groups</li> <li>• Max. 4094 VIDs</li> </ul>
L2 Features	<ul style="list-style-type: none"> <li>• MAC Address Table: 8K</li> <li>• Flow Control <ul style="list-style-type: none"> <li>• 802.3x Flow Control</li> <li>• HOL Blocking Prevention</li> </ul> </li> <li>• Jumbo Frames up to 9216 Bytes (DGS-1100-05/08/08P)</li> <li>• IGMP Snooping <ul style="list-style-type: none"> <li>• IGMP v1/v2 Snooping</li> <li>• Supports 32 Groups</li> </ul> </li> <li>• Static Trunk <ul style="list-style-type: none"> <li>• DGS-1100-05: 1 group, 2-4 ports per group</li> <li>• DGS-1100-08/08P: 2 groups, 2-4 ports per group</li> <li>• DGS-1100-16/24: 8 groups, 2-4 ports per group</li> </ul> </li> </ul>	<ul style="list-style-type: none"> <li>• Loopback Detection</li> <li>• Cable Diagnostics</li> <li>• Port Mirroring <ul style="list-style-type: none"> <li>• One-to-One</li> <li>• Many-to-One (DGS-1100-16/24)</li> </ul> </li> <li>• Statistics <ul style="list-style-type: none"> <li>• Tx Ok</li> <li>• Tx Error</li> <li>• Rx Ok</li> <li>• Rx Error</li> </ul> </li> </ul>
Quality of Service (QoS)	<ul style="list-style-type: none"> <li>• 802.1p Quality of Service</li> <li>• 4 queues per port</li> <li>• Queue Handling <ul style="list-style-type: none"> <li>• Strict</li> <li>• Weighted Round Robin (WRR)</li> </ul> </li> </ul>	<ul style="list-style-type: none"> <li>• Bandwidth Control <ul style="list-style-type: none"> <li>• DGS-1100-05/08/08P: Port-based (Ingress/Egress, min. granularity 8 Kb/s)</li> <li>• DGS-1100-16/24: Port-based (Ingress/Egress, min. granularity 64 Kb/s)</li> </ul> </li> </ul>
Security	<ul style="list-style-type: none"> <li>• Static MAC Address <ul style="list-style-type: none"> <li>• DGS-1100-05/08/08P: up to 32 entries</li> <li>• DGS-1100-16/24: up to 128 entries</li> </ul> </li> </ul>	<ul style="list-style-type: none"> <li>• Broadcast/Multicast/Unknown Unicast Storm Control</li> </ul>
Management	<ul style="list-style-type: none"> <li>• Web-based GUI (Supports IPv4)</li> </ul>	<ul style="list-style-type: none"> <li>• SmartConsole Utility</li> </ul>
D-Link Green	<ul style="list-style-type: none"> <li>• Power Saving by <ul style="list-style-type: none"> <li>• Link Status</li> <li>• Cable Length</li> </ul> </li> </ul>	<ul style="list-style-type: none"> <li>• Compliant with IEEE 802.3az Energy Efficient Ethernet</li> <li>• Compliant with RoHS 6</li> </ul>
RFC Standard List	<ul style="list-style-type: none"> <li>• RFC 768 UDP</li> <li>• RFC 791 IP</li> <li>• RFC 792 ICMP</li> <li>• RFC 793 TCP</li> <li>• RFC 826 ARP</li> </ul>	<ul style="list-style-type: none"> <li>• RFC 951 BootP Client</li> <li>• RFC 1542 BootP/DHCP client</li> <li>• RFC 1945 HTTP/1.0</li> <li>• RFC 2647 802.1p</li> <li>• RFC 2236, 4451 IGMP Snooping</li> </ul>



For more information: [www.dlink.com](http://www.dlink.com)

**D-Link European Headquarters.** D-Link (Europe) Ltd., D-Link House, Abbey Road, Park Royal, London, NW10 7BX. Specifications are subject to change without notice. D-Link is a registered trademark of D-Link Corporation and its overseas subsidiaries. All other trademarks belong to their respective owners. ©2013 D-Link Corporation. All rights reserved. E&OE.

Updated November 2013

**D-Link®**  
Building Networks for People