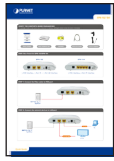


**VERIFY THE CONTENTS INSIDE PACKAGE BOX**

The package should contain below items, if any item is missing or damaged, please contact the seller immediately



Quick Guide



EPN-102/EPN-104



CD-ROM



Ethernet Cable



Power Adapter

**Rear Panel for EPN-102/EPN-104**

EPN-102



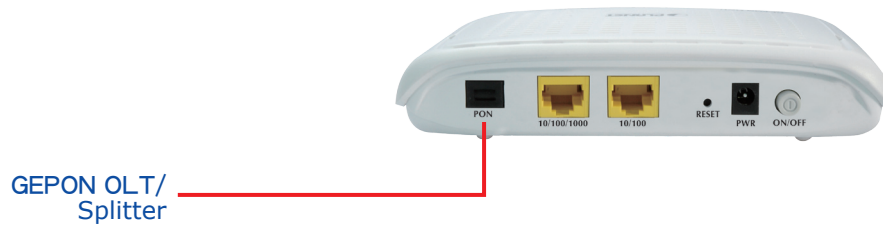
1-PON Interface, 1-Port FE + 1-Port GE Interface

EPN-104

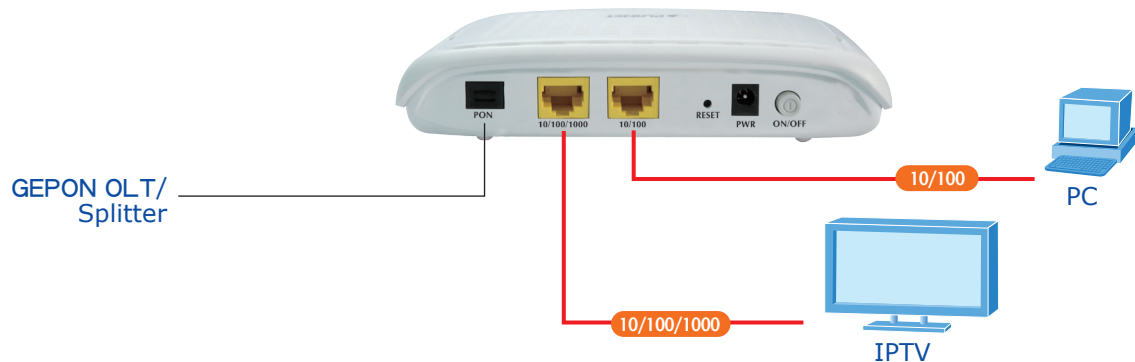


1-PON Interface, 4-Port FE Interface

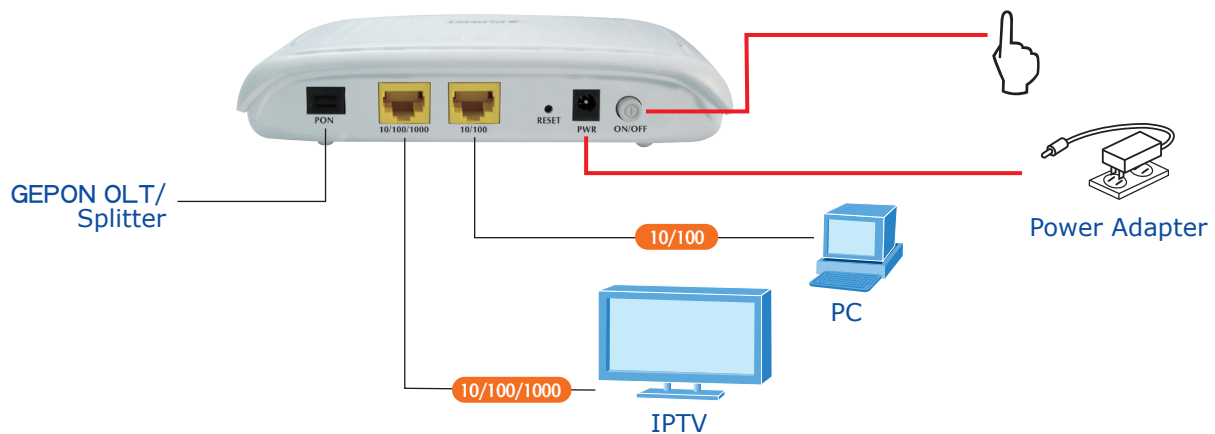
**STEP 1: Connect the Fiber cable to PON port**



**STEP 2: Connect the network devices to LAN port**



**STEP 3: Connect the Power Adapter, then press the Button . Check the LEDs on the front panel are on accordingly**



**STEP 4: Verifying the Installation**

After power on the EPN-102/EPN-104, the Power LED will be bright. When system is ready, the PON LED will be flash. If the PON connection is ready, the PON LED will be on and Link LED is ON. And then you can enjoy the high bandwidth connection via PON technology.



**Note: Please refer to the User's Manual in CD-ROM for more information.**

**APPLICATION**

